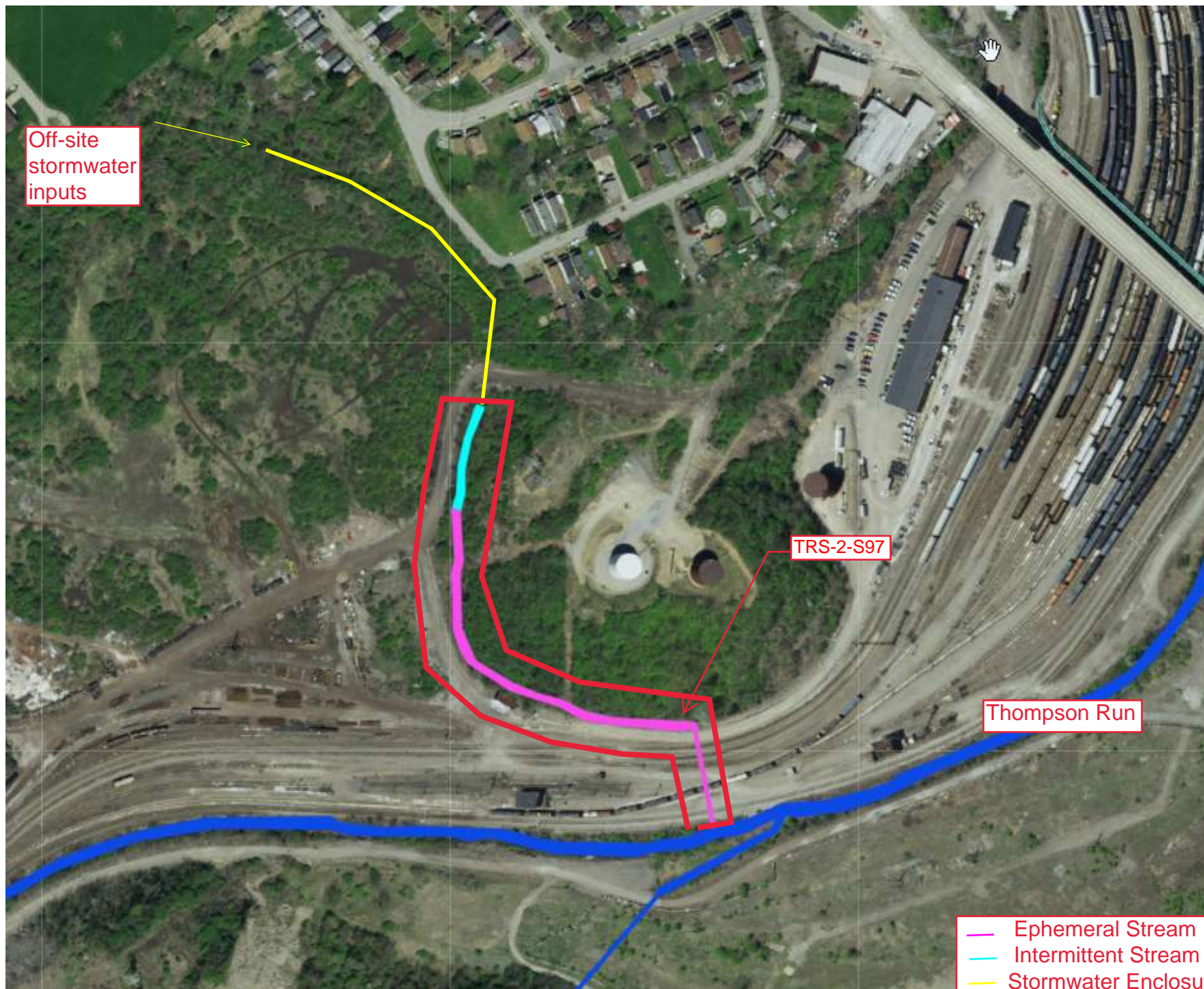


- Ephemeral Stream
- Intermittent Stream
- Stormwater Enclosures (appx.)
- AJD Review Area
- PJD Review Area





Off-site  
stormwater  
inputs

TRS-2-S97

Thompson Run

- Ephemeral Stream
- Intermittent Stream
- Stormwater Enclosures (appx.)
- AJD Review Area

**APPROVED JURISDICTIONAL DETERMINATION FORM**  
**U.S. Army Corps of Engineers**

This form should be completed by following the instructions provided in Section IV of the JD Form Instructional Guidebook.

**SECTION I: BACKGROUND INFORMATION**

**A. REPORT COMPLETION DATE FOR APPROVED JURISDICTIONAL DETERMINATION (JD): 29 November 2021**

**B. DISTRICT OFFICE, FILE NAME, AND NUMBER: CELRP-RG-S 2020-00329**

**C. PROJECT LOCATION AND BACKGROUND INFORMATION:**

State: PA County/parish/borough: Allegheny City: West Mifflin  
Center coordinates of site (lat/long in degree decimal format): Lat. 40.381719° N, Long. -79.871094° W.  
Universal Transverse Mercator: 17S: 595825, 4470737

Name of nearest waterbody: Monongahela River

Name of nearest Traditional Navigable Water (TNW) into which the aquatic resource flows: Monongahela River

Name of watershed or Hydrologic Unit Code (HUC): HUC12: 050200050808, Streets Run-Monongahela River

☒ Check if map/diagram of review area and/or potential jurisdictional areas is/are available upon request.

☐ Check if other sites (e.g., offsite mitigation sites, disposal sites, etc...) are associated with this action and are recorded on a different JD form.

**D. REVIEW PERFORMED FOR SITE EVALUATION (CHECK ALL THAT APPLY):**

☒ Office (Desk) Determination. Date: 29 November 2021

☒ Field Determination. Date(s): 28 October 2021

**SECTION II: SUMMARY OF FINDINGS**

**A. RHA SECTION 10 DETERMINATION OF JURISDICTION.**

There **Are no** "navigable waters of the U.S." within Rivers and Harbors Act (RHA) jurisdiction (as defined by 33 CFR part 329) in the review area. [Required]

☐ Waters subject to the ebb and flow of the tide.

☐ Waters are presently used, or have been used in the past, or may be susceptible for use to transport interstate or foreign commerce.

Explain: .

**B. CWA SECTION 404 DETERMINATION OF JURISDICTION.**

There **Are no** "waters of the U.S." within Clean Water Act (CWA) jurisdiction (as defined by 33 CFR part 328) in the review area. [Required]

**1. Waters of the U.S.**

**a. Indicate presence of waters of U.S. in review area (check all that apply):<sup>1</sup>**

- ☐ TNWs, including territorial seas
- ☐ Wetlands adjacent to TNWs
- ☐ Relatively permanent waters<sup>2</sup> (RPWs) that flow directly or indirectly into TNWs
- ☐ Non-RPWs that flow directly or indirectly into TNWs
- ☐ Wetlands directly abutting RPWs that flow directly or indirectly into TNWs
- ☐ Wetlands adjacent to but not directly abutting RPWs that flow directly or indirectly into TNWs
- ☐ Wetlands adjacent to non-RPWs that flow directly or indirectly into TNWs
- ☐ Impoundments of jurisdictional waters
- ☐ Isolated (interstate or intrastate) waters, including isolated wetlands

**b. Identify (estimate) size of waters of the U.S. in the review area:**

Non-wetland waters: linear feet: width (ft) and/or acres.

Wetlands: n/a acres.

**c. Limits (boundaries) of jurisdiction based on: Pick List**

Elevation of established OHWM (if known): .

**2. Non-regulated waters/wetlands (check if applicable):<sup>3</sup>**

☒ Potentially jurisdictional waters and/or wetlands were assessed within the review area and determined to be not jurisdictional.

Explain: **MON-1-S30 flows into the Monongahela River but lacks a significant nexus to this downstream TNW.**

<sup>1</sup> Boxes checked below shall be supported by completing the appropriate sections in Section III below.

<sup>2</sup> For purposes of this form, an RPW is defined as a tributary that is not a TNW and that typically flows year-round or has continuous flow at least "seasonally" (e.g., typically 3 months).

<sup>3</sup> Supporting documentation is presented in Section III.F.

### SECTION III: CWA ANALYSIS

#### A. TNWs AND WETLANDS ADJACENT TO TNWs

The agencies will assert jurisdiction over TNWs and wetlands adjacent to TNWs. If the aquatic resource is a TNW, complete Section III.A.1 and Section III.D.1. only; if the aquatic resource is a wetland adjacent to a TNW, complete Sections III.A.1 and 2 and Section III.D.1.; otherwise, see Section III.B below.

1. **TNW**

Identify TNW: .

Summarize rationale supporting determination: .

2. **Wetland adjacent to TNW**

Summarize rationale supporting conclusion that wetland is “adjacent”: .

#### B. CHARACTERISTICS OF TRIBUTARY (THAT IS NOT A TNW) AND ITS ADJACENT WETLANDS (IF ANY):

This section summarizes information regarding characteristics of the tributary and its adjacent wetlands, if any, and it helps determine whether or not the standards for jurisdiction established under *Rapanos* have been met.

The agencies will assert jurisdiction over non-navigable tributaries of TNWs where the tributaries are “relatively permanent waters” (RPWs), i.e. tributaries that typically flow year-round or have continuous flow at least seasonally (e.g., typically 3 months). A wetland that directly abuts an RPW is also jurisdictional. If the aquatic resource is not a TNW, but has year-round (perennial) flow, skip to Section III.D.2. If the aquatic resource is a wetland directly abutting a tributary with perennial flow, skip to Section III.D.4.

A wetland that is adjacent to but that does not directly abut an RPW requires a significant nexus evaluation. Corps districts and EPA regions will include in the record any available information that documents the existence of a significant nexus between a relatively permanent tributary that is not perennial (and its adjacent wetlands if any) and a traditional navigable water, even though a significant nexus finding is not required as a matter of law.

If the waterbody<sup>4</sup> is not an RPW, or a wetland directly abutting an RPW, a JD will require additional data to determine if the waterbody has a significant nexus with a TNW. If the tributary has adjacent wetlands, the significant nexus evaluation must consider the tributary in combination with all of its adjacent wetlands. This significant nexus evaluation that combines, for analytical purposes, the tributary and all of its adjacent wetlands is used whether the review area identified in the JD request is the tributary, or its adjacent wetlands, or both. If the JD covers a tributary with adjacent wetlands, complete Section III.B.1 for the tributary, Section III.B.2 for any onsite wetlands, and Section III.B.3 for all wetlands adjacent to that tributary, both onsite and offsite. The determination whether a significant nexus exists is determined in Section III.C below.

1. **Characteristics of non-TNWs that flow directly or indirectly into TNW**

(i) **General Area Conditions:**

Watershed size: 0.03 **square miles**

Drainage area: 0.03 **square miles**

Average annual rainfall: 45.9 inches

Average annual snowfall: 10.9 inches

(ii) **Physical Characteristics:**

(a) **Relationship with TNW:**

☒ Tributary flows directly into TNW.

☐ Tributary flows through **Pick List** tributaries before entering TNW.

Project waters are **Pick List** river miles from TNW.

Project waters are **Pick List** river miles from RPW.

Project waters are **1 (or less)** aerial (straight) miles from TNW.

Project waters are **Pick List** aerial (straight) miles from RPW.

Project waters cross or serve as state boundaries. Explain: .

Identify flow route to TNW<sup>5</sup>: MON-1-S30 flows into a grated inlet at the top of the old K-Mart parking area then becomes enclosed and connected to the local stormwater infrastructure. This 24-inch enclosure travels downslope,

<sup>4</sup> Note that the Instructional Guidebook contains additional information regarding swales, ditches, washes, and erosional features generally and in the arid West.

<sup>5</sup> Flow route can be described by identifying, e.g., tributary a, which flows through the review area, to flow into tributary b, which then flows into TNW.

intersecting with and becoming a 48-inch enclosure, towards Kennywood Park where it collects stormwater flow all along the way until it is discharged into the Monongahela River. In Section B.1.(ii) above, I described this tributary as flowing directly into the TNW; however, flow occurs through several stormwater systems before entering the TNW - this is not necessarily made clear in my description of "directly into TNW" but will be noted here.

Tributary stream order, if known: Tributary stream order is unclear given the nature of its interconnectedness with stormwater systems.

(b) General Tributary Characteristics (check all that apply):

Tributary is: ☐ Natural  
☐ Artificial (man-made). Explain: .  
☒ Manipulated (man-altered). Explain: the stream occurs in a highly urbanized area and has likely

been manipulated in the past. Obvious evidence of this is the copious culverts and enclosures found here as input/outputs for the stream, though it is unclear how much of the stream has been altered in the past several hundred years.

Tributary properties with respect to top of bank (estimate):

Average width: <3 feet

Average depth: 1 feet

Average side slopes: **3:1** .

Primary tributary substrate composition (check all that apply):

<input checked="" type="checkbox"/> Silts	<input type="checkbox"/> Sands	<input type="checkbox"/> Concrete
<input type="checkbox"/> Cobbles	<input checked="" type="checkbox"/> Gravel	<input type="checkbox"/> Muck
<input type="checkbox"/> Bedrock	<input type="checkbox"/> Vegetation. Type/% cover: varies	
<input type="checkbox"/> Other. Explain: .		

Tributary condition/stability [e.g., highly eroding, sloughing banks]. Explain: Sloughing banks observed.

Presence of run/riffle/pool complexes. Explain: n/a.

Tributary geometry: **Relatively straight**

Tributary gradient (approximate average slope): 14 %

(c) Flow:

Tributary provides for: **Ephemeral flow**

Estimate average number of flow events in review area/year: **Pick List**

Describe flow regime: Flow occurs in direct response to precipitation.

Other information on duration and volume: Flow input primarily from adjacent stormwater flow from high school stadium/parking area and Commonwealth Ave.

Surface flow is: **Discrete**. Characteristics: Confined to channel before entering grated inlet.

Subsurface flow: **No**. Explain findings: .

☐ Dye (or other) test performed: .

Tributary has (check all that apply):

<input checked="" type="checkbox"/> Bed and banks	
<input checked="" type="checkbox"/> OHWM <sup>6</sup> (check all indicators that apply):	
<input type="checkbox"/> clear, natural line impressed on the bank	<input type="checkbox"/> the presence of litter and debris
<input type="checkbox"/> changes in the character of soil	<input type="checkbox"/> destruction of terrestrial vegetation
<input type="checkbox"/> shelving	<input type="checkbox"/> the presence of wrack line
<input checked="" type="checkbox"/> vegetation matted down, bent, or absent	<input type="checkbox"/> sediment sorting
<input checked="" type="checkbox"/> leaf litter disturbed or washed away	<input checked="" type="checkbox"/> scour
<input type="checkbox"/> sediment deposition	<input type="checkbox"/> multiple observed or predicted flow events
<input type="checkbox"/> water staining	<input type="checkbox"/> abrupt change in plant community
<input type="checkbox"/> other (list):	
<input type="checkbox"/> Discontinuous OHWM. <sup>7</sup> Explain: .	

If factors other than the OHWM were used to determine lateral extent of CWA jurisdiction (check all that apply):

<input type="checkbox"/> High Tide Line indicated by:	<input type="checkbox"/> Mean High Water Mark indicated by:
<input type="checkbox"/> oil or scum line along shore objects	<input type="checkbox"/> survey to available datum;
<input type="checkbox"/> fine shell or debris deposits (foreshore)	<input type="checkbox"/> physical markings;
<input type="checkbox"/> physical markings/characteristics	<input type="checkbox"/> vegetation lines/changes in vegetation types.
<input type="checkbox"/> tidal gauges	

<sup>6</sup>A natural or man-made discontinuity in the OHWM does not necessarily sever jurisdiction (e.g., where the stream temporarily flows underground, or where the OHWM has been removed by development or agricultural practices). Where there is a break in the OHWM that is unrelated to the waterbody's flow regime (e.g., flow over a rock outcrop or through a culvert), the agencies will look for indicators of flow above and below the break.

<sup>7</sup>Ibid.

☐ other (list):

**(iii) Chemical Characteristics:**

Characterize tributary (e.g., water color is clear, discolored, oily film; water quality; general watershed characteristics, etc.).

Explain: Stream flow chemical characteristics are strongly influence by rainfall chemcial charceristics. Stream receives stormwater flow from adjacent impervious surfaces (public/school roads & parking) and is likely carrying oil, gas, and other potential chemical inputs associated with car parking areas .

Identify specific pollutants, if known: some turbidity is likely given the noted erosion.

(iv) **Biological Characteristics. Channel supports (check all that apply):**

- ☒ Riparian corridor. Characteristics (type, average width): 20+ foot adjacent to road but 50+ foot on opposite side.
- ☐ Wetland fringe. Characteristics: .
- ☐ Habitat for:
  - ☐ Federally Listed species. Explain findings: .
  - ☐ Fish/spawn areas. Explain findings: .
  - ☐ Other environmentally-sensitive species. Explain findings: .
  - ☐ Aquatic/wildlife diversity. Explain findings: .

2. **Characteristics of wetlands adjacent to non-TNW that flow directly or indirectly into TNW**

(i) **Physical Characteristics:**

(a) General Wetland Characteristics:

Properties:

Wetland size:          acres

Wetland type. Explain: .

Wetland quality. Explain: .

Project wetlands cross or serve as state boundaries. Explain: .

(b) General Flow Relationship with Non-TNW:

Flow is: **Pick List**. Explain: .

Surface flow is: **Pick List**

Characteristics: .

Subsurface flow: **Pick List**. Explain findings: .

☐ Dye (or other) test performed: .

(c) Wetland Adjacency Determination with Non-TNW:

☐ Directly abutting

☐ Not directly abutting

☐ Discrete wetland hydrologic connection. Explain: .

☐ Ecological connection. Explain: .

☐ Separated by berm/barrier. Explain: .

(d) Proximity (Relationship) to TNW

Project wetlands are **Pick List** river miles from TNW.

Project waters are **Pick List** aerial (straight) miles from TNW.

Flow is from: **Pick List**.

Estimate approximate location of wetland as within the **Pick List** floodplain.

(ii) **Chemical Characteristics:**

Characterize wetland system (e.g., water color is clear, brown, oil film on surface; water quality; general watershed characteristics; etc.). Explain: .

Identify specific pollutants, if known: .

(iii) **Biological Characteristics. Wetland supports (check all that apply):**

- ☐ Riparian buffer. Characteristics (type, average width): .
- ☐ Vegetation type/percent cover. Explain: .
- ☐ Habitat for:
  - ☐ Federally Listed species. Explain findings: .
  - ☐ Fish/spawn areas. Explain findings: .
  - ☐ Other environmentally-sensitive species. Explain findings: .
  - ☐ Aquatic/wildlife diversity. Explain findings: .

3. **Characteristics of all wetlands adjacent to the tributary (if any)**

All wetland(s) being considered in the cumulative analysis: **Pick List**

Approximately (          ) acres in total are being considered in the cumulative analysis.



For each wetland, specify the following:

Directly abuts? (Y/N)

Size (in acres)

Directly abuts? (Y/N)

Size (in acres)

Summarize overall biological, chemical and physical functions being performed: .

### C. SIGNIFICANT NEXUS DETERMINATION

A significant nexus analysis will assess the flow characteristics and functions of the tributary itself and the functions performed by any wetlands adjacent to the tributary to determine if they significantly affect the chemical, physical, and biological integrity of a TNW. For each of the following situations, a significant nexus exists if the tributary, in combination with all of its adjacent wetlands, has more than a speculative or insubstantial effect on the chemical, physical and/or biological integrity of a TNW. Considerations when evaluating significant nexus include, but are not limited to the volume, duration, and frequency of the flow of water in the tributary and its proximity to a TNW, and the functions performed by the tributary and all its adjacent wetlands. It is not appropriate to determine significant nexus based solely on any specific threshold of distance (e.g. between a tributary and its adjacent wetland or between a tributary and the TNW). Similarly, the fact an adjacent wetland lies within or outside of a floodplain is not solely determinative of significant nexus.

Draw connections between the features documented and the effects on the TNW, as identified in the *Rapanos* Guidance and discussed in the Instructional Guidebook. Factors to consider include, for example:

- Does the tributary, in combination with its adjacent wetlands (if any), have the capacity to carry pollutants or flood waters to TNWs, or to reduce the amount of pollutants or flood waters reaching a TNW?
- Does the tributary, in combination with its adjacent wetlands (if any), provide habitat and lifecycle support functions for fish and other species, such as feeding, nesting, spawning, or rearing young for species that are present in the TNW?
- Does the tributary, in combination with its adjacent wetlands (if any), have the capacity to transfer nutrients and organic carbon that support downstream foodwebs?
- Does the tributary, in combination with its adjacent wetlands (if any), have other relationships to the physical, chemical, or biological integrity of the TNW?

**Note: the above list of considerations is not inclusive and other functions observed or known to occur should be documented below:**

1. **Significant nexus findings for non-RPW that has no adjacent wetlands and flows directly or indirectly into TNWs.** Explain findings of presence or absence of significant nexus below, based on the tributary itself, then go to Section III.D: MON-1-S30 is an ephemeral stream which flows parallel to Commonwealth Ave . This waterway receives stormwater input from the West Mifflin High School stadium/associated parking area to the west as well as overland flow from adjacent road/wooded areas. The waterway flows towards an old K-Mart access road and parking lot where it enters an inlet and becomes a 24-inch enclosure. This enclosure flows downslope and becomes intermixed with more and more stormwater inputs, enters and becomes a 48-inch enclosure, and travels towards Kennywood Park and its associated parking areas and under a wide railroad ROW before entering the TNW. Inputs directly into MON-1-S30 stream feature appear to be a combination of overland flow directly into the stream (during rain events) and stormwater flow from adjacent developed areas. This stream feature drains approximately 0.03 square miles of adjacent upland area. The drainage area is very small and consists of 0.0006% of the total area of the HUC12. The drainage area is at the top of its watershed and does not contain additional upstream flow. Water which drains from this area must then flow through stormwater systems the rest of the way downstream before entering the TNW. Physically, the waterway is ephemeral and drains a small area. Biologically, the waterway does not appear to serve much of a service to biota with possibly the exception of seasonal mosquitos. The ephemeral flow of the waterway would not provide habitat for aquatic biota nor a wide range of macroinvertebrates. Chemically, the stream transports water during precipitation events. Given the stormwater inputs from adjacent parking areas, it is likely that this waterway has the potential to transport some chemical pollutants associated with parked cars (oil, gas, etc.). The chemical contribution to the downstream TNW, however, is insignificant given the smallness of the drainage area, the indistinguishable nature of the chemical inputs directly into MON-1-S30 from its downstream stormwater inputs (i.e. Kennywood area drainage), and the largeness of the downstream TNW's flow compared to MON-1-S30's flow.
2. **Significant nexus findings for non-RPW and its adjacent wetlands, where the non-RPW flows directly or indirectly into TNWs.** Explain findings of presence or absence of significant nexus below, based on the tributary in combination with all of its adjacent wetlands, then go to Section III.D: .
3. **Significant nexus findings for wetlands adjacent to an RPW but that do not directly abut the RPW.** Explain findings of presence or absence of significant nexus below, based on the tributary in combination with all of its adjacent wetlands, then go to Section III.D: .



**D. DETERMINATIONS OF JURISDICTIONAL FINDINGS. THE SUBJECT WATERS/WETLANDS ARE (CHECK ALL THAT APPLY):**

**1. TNWs and Adjacent Wetlands.** Check all that apply and provide size estimates in review area:

- ☐ TNWs: linear feet width (ft), Or, acres.  
☐ Wetlands adjacent to TNWs: acres.

**2. RPWs that flow directly or indirectly into TNWs.**

- ☐ Tributaries of TNWs where tributaries typically flow year-round are jurisdictional. Provide data and rationale indicating that tributary is perennial: .  
☐ Tributaries of TNW where tributaries have continuous flow “seasonally” (e.g., typically three months each year) are jurisdictional. Data supporting this conclusion is provided at Section III.B. Provide rationale indicating that tributary flows seasonally: .

Provide estimates for jurisdictional waters in the review area (check all that apply):

- ☐ Tributary waters: linear feet width (ft).  
☐ Other non-wetland waters: acres.  
Identify type(s) of waters: .

**3. Non-RPWs<sup>8</sup> that flow directly or indirectly into TNWs.**

- ☐ Waterbody that is not a TNW or an RPW, but flows directly or indirectly into a TNW, and it has a significant nexus with a TNW is jurisdictional. Data supporting this conclusion is provided at Section III.C.

Provide estimates for jurisdictional waters within the review area (check all that apply):

- ☐ Tributary waters: linear feet width (ft).  
☐ Other non-wetland waters: acres.  
Identify type(s) of waters: .

**4. Wetlands directly abutting an RPW that flow directly or indirectly into TNWs.**

- ☐ Wetlands directly abut RPW and thus are jurisdictional as adjacent wetlands.  
☐ Wetlands directly abutting an RPW where tributaries typically flow year-round. Provide data and rationale indicating that tributary is perennial in Section III.D.2, above. Provide rationale indicating that wetland is directly abutting an RPW: .  
☐ Wetlands directly abutting an RPW where tributaries typically flow “seasonally.” Provide data indicating that tributary is seasonal in Section III.B and rationale in Section III.D.2, above. Provide rationale indicating that wetland is directly abutting an RPW: .

Provide acreage estimates for jurisdictional wetlands in the review area: acres.

**5. Wetlands adjacent to but not directly abutting an RPW that flow directly or indirectly into TNWs.**

- ☐ Wetlands that do not directly abut an RPW, but when considered in combination with the tributary to which they are adjacent and with similarly situated adjacent wetlands, have a significant nexus with a TNW are jurisdictional. Data supporting this conclusion is provided at Section III.C.

Provide acreage estimates for jurisdictional wetlands in the review area: acres.

**6. Wetlands adjacent to non-RPWs that flow directly or indirectly into TNWs.**

- ☐ Wetlands adjacent to such waters, and have when considered in combination with the tributary to which they are adjacent and with similarly situated adjacent wetlands, have a significant nexus with a TNW are jurisdictional. Data supporting this conclusion is provided at Section III.C.

Provide estimates for jurisdictional wetlands in the review area: acres.

**7. Impoundments of jurisdictional waters.<sup>9</sup>**

As a general rule, the impoundment of a jurisdictional tributary remains jurisdictional.

- ☐ Demonstrate that impoundment was created from “waters of the U.S.,” or

<sup>8</sup>See Footnote # 3.

<sup>9</sup> To complete the analysis refer to the key in Section III.D.6 of the Instructional Guidebook.

- ☐ Demonstrate that water meets the criteria for one of the categories presented above (1-6), or  
☐ Demonstrate that water is isolated with a nexus to commerce (see E below).

**E. ISOLATED [INTERSTATE OR INTRA-STATE] WATERS, INCLUDING ISOLATED WETLANDS, THE USE, DEGRADATION OR DESTRUCTION OF WHICH COULD AFFECT INTERSTATE COMMERCE, INCLUDING ANY SUCH WATERS (CHECK ALL THAT APPLY):<sup>10</sup>**

- ☐ which are or could be used by interstate or foreign travelers for recreational or other purposes.  
☐ from which fish or shellfish are or could be taken and sold in interstate or foreign commerce.  
☐ which are or could be used for industrial purposes by industries in interstate commerce.  
☐ Interstate isolated waters. Explain: .  
☐ Other factors. Explain: .

**Identify water body and summarize rationale supporting determination:** .

Provide estimates for jurisdictional waters in the review area (check all that apply):

- ☐ Tributary waters: linear feet width (ft).  
☐ Other non-wetland waters: acres.  
 Identify type(s) of waters: .  
☐ Wetlands: acres.

**F. NON-JURISDICTIONAL WATERS, INCLUDING WETLANDS (CHECK ALL THAT APPLY):**

- ☐ If potential wetlands were assessed within the review area, these areas did not meet the criteria in the 1987 Corps of Engineers Wetland Delineation Manual and/or appropriate Regional Supplements.  
☐ Review area included isolated waters with no substantial nexus to interstate (or foreign) commerce.  
☐ Prior to the Jan 2001 Supreme Court decision in “*SWANCC*,” the review area would have been regulated based solely on the “Migratory Bird Rule” (MBR).  
☒ Waters do not meet the “Significant Nexus” standard, where such a finding is required for jurisdiction. Explain: **Waters which flow from MON-1-S30 have no physical or biological nexus to downstream TNWs; however, a chemical nexus has some potential to occur. It has been determined that this chemical nexus is discountable given reasons stated in Section C.1. above. Given the stream is absent any significant nexus to downstream TNWs, it has been determined that MON-1-S30 is not a jurisdictional water.**  
☐ Other: (explain, if not covered above): .

Provide acreage estimates for non-jurisdictional waters in the review area, where the sole potential basis of jurisdiction is the MBR factors (i.e., presence of migratory birds, presence of endangered species, use of water for irrigated agriculture), using best professional judgment (check all that apply):

- ☐ Non-wetland waters (i.e., rivers, streams): linear feet width (ft).  
☐ Lakes/ponds: acres.  
☐ Other non-wetland waters: acres. List type of aquatic resource: .  
☐ Wetlands: acres.

Provide acreage estimates for non-jurisdictional waters in the review area that do not meet the “Significant Nexus” standard, where such a finding is required for jurisdiction (check all that apply):

- ☒ Non-wetland waters (i.e., rivers, streams): **297** linear feet, **<3** width (ft).  
☐ Lakes/ponds: acres.  
☐ Other non-wetland waters: acres. List type of aquatic resource: .  
☐ Wetlands: acres.

**SECTION IV: DATA SOURCES.**

**A. SUPPORTING DATA. Data reviewed for JD (check all that apply - checked items shall be included in case file and, where checked and requested, appropriately reference sources below):**

- ☒ Maps, plans, plots or plat submitted by or on behalf of the applicant/consultant: 53C2 project plans; Delineation Report (with addendums).  
☐ Data sheets prepared/submitted by or on behalf of the applicant/consultant.  
☐ Office concurs with data sheets/delineation report.  
☐ Office does not concur with data sheets/delineation report.

<sup>10</sup> Prior to asserting or declining CWA jurisdiction based solely on this category, Corps Districts will elevate the action to Corps and EPA HQ for review consistent with the process described in the Corps/EPA Memorandum Regarding CWA Act Jurisdiction Following Rapanos.

- ☐ Data sheets prepared by the Corps: .
- ☐ Corps navigable waters' study: .
- ☒ U.S. Geological Survey Hydrologic Atlas: .
  - ☒ USGS NHD data.
  - ☒ USGS 8 and 12 digit HUC maps.
- ☒ U.S. Geological Survey map(s). Cite scale & quad name: Braddock 2019.
- ☐ USDA Natural Resources Conservation Service Soil Survey. Citation: .
- ☒ National wetlands inventory map(s). Cite name: USFWS "Wetlands Mapper".
- ☐ State/Local wetland inventory map(s): .
- ☐ FEMA/FIRM maps: .
- ☐ 100-year Floodplain Elevation is: (National Geodetic Vertical Datum of 1929)
- ☒ Photographs: ☒ Aerial (Name & Date): Google Earth: Oct. 2020.  
or ☒ Other (Name & Date): Site photos provided with Delineation Reports; Corps on-site photographs Oct. 2021.
- ☐ Previous determination(s). File no. and date of response letter: .
- ☐ Applicable/supporting case law: .
- ☐ Applicable/supporting scientific literature: .
- ☐ Other information (please specify): .

**B. ADDITIONAL COMMENTS TO SUPPORT JD:** No flowing water was observed during the 28 Oct. 2021 site visit. Antecedent Precipitation Tool (APT) was utilized to determine whether conditions were within the normal range of climatic conditions on the day of the site visit. According to the APT, rainfall for the previous 30-day period was within the 30-year normal range of precipitation. This visit occurred during the wet season with conditions for the previous 90 days rated as "wetter than normal". This visit did not occur during a drought or on the heels of a large rain event which could have adversely affected observations on the day of the site visit.

**APPROVED JURISDICTIONAL DETERMINATION FORM**  
**U.S. Army Corps of Engineers**

This form should be completed by following the instructions provided in Section IV of the JD Form Instructional Guidebook.

**SECTION I: BACKGROUND INFORMATION**

**A. REPORT COMPLETION DATE FOR APPROVED JURISDICTIONAL DETERMINATION (JD): 29 November 2021**

**B. DISTRICT OFFICE, FILE NAME, AND NUMBER: CELRP-RG-S 2020-00329**

**C. PROJECT LOCATION AND BACKGROUND INFORMATION:**

State: PA County/parish/borough: Allegheny City: West Mifflin  
Center coordinates of site (lat/long in degree decimal format): Lat. 40.381719° N, Long. -79.871094° W.  
Universal Transverse Mercator: 17S: 595825, 4470737

Name of nearest waterbody: Monongahela River

Name of nearest Traditional Navigable Water (TNW) into which the aquatic resource flows: Monongahela River

Name of watershed or Hydrologic Unit Code (HUC): HUC12: 050200050808, Streets Run-Monongahela River

☒ Check if map/diagram of review area and/or potential jurisdictional areas is/are available upon request.

☐ Check if other sites (e.g., offsite mitigation sites, disposal sites, etc...) are associated with this action and are recorded on a different JD form.

**D. REVIEW PERFORMED FOR SITE EVALUATION (CHECK ALL THAT APPLY):**

☒ Office (Desk) Determination. Date: 29 November 2021

☒ Field Determination. Date(s): 28 October 2021

**SECTION II: SUMMARY OF FINDINGS**

**A. RHA SECTION 10 DETERMINATION OF JURISDICTION.**

There **Are no** "navigable waters of the U.S." within Rivers and Harbors Act (RHA) jurisdiction (as defined by 33 CFR part 329) in the review area. [Required]

☐ Waters subject to the ebb and flow of the tide.

☐ Waters are presently used, or have been used in the past, or may be susceptible for use to transport interstate or foreign commerce.

Explain: .

**B. CWA SECTION 404 DETERMINATION OF JURISDICTION.**

There **Are no** "waters of the U.S." within Clean Water Act (CWA) jurisdiction (as defined by 33 CFR part 328) in the review area. [Required]

**1. Waters of the U.S.**

**a. Indicate presence of waters of U.S. in review area (check all that apply):<sup>1</sup>**

- ☐ TNWs, including territorial seas
- ☐ Wetlands adjacent to TNWs
- ☐ Relatively permanent waters<sup>2</sup> (RPWs) that flow directly or indirectly into TNWs
- ☐ Non-RPWs that flow directly or indirectly into TNWs
- ☐ Wetlands directly abutting RPWs that flow directly or indirectly into TNWs
- ☐ Wetlands adjacent to but not directly abutting RPWs that flow directly or indirectly into TNWs
- ☐ Wetlands adjacent to non-RPWs that flow directly or indirectly into TNWs
- ☐ Impoundments of jurisdictional waters
- ☐ Isolated (interstate or intrastate) waters, including isolated wetlands

**b. Identify (estimate) size of waters of the U.S. in the review area:**

Non-wetland waters: linear feet: width (ft) and/or acres.

Wetlands: n/a acres.

**c. Limits (boundaries) of jurisdiction based on: Pick List**

Elevation of established OHWM (if known): .

**2. Non-regulated waters/wetlands (check if applicable):<sup>3</sup>**

☒ Potentially jurisdictional waters and/or wetlands were assessed within the review area and determined to be not jurisdictional.

Explain: **MON-1-S31 flows into the Monongahela River but lacks a significant nexus to this downstream TNW.**

<sup>1</sup> Boxes checked below shall be supported by completing the appropriate sections in Section III below.

<sup>2</sup> For purposes of this form, an RPW is defined as a tributary that is not a TNW and that typically flows year-round or has continuous flow at least "seasonally" (e.g., typically 3 months).

<sup>3</sup> Supporting documentation is presented in Section III.F.



### SECTION III: CWA ANALYSIS

#### A. TNWs AND WETLANDS ADJACENT TO TNWs

The agencies will assert jurisdiction over TNWs and wetlands adjacent to TNWs. If the aquatic resource is a TNW, complete Section III.A.1 and Section III.D.1. only; if the aquatic resource is a wetland adjacent to a TNW, complete Sections III.A.1 and 2 and Section III.D.1.; otherwise, see Section III.B below.

1. **TNW**

Identify TNW: .

Summarize rationale supporting determination: .

2. **Wetland adjacent to TNW**

Summarize rationale supporting conclusion that wetland is “adjacent”: .

#### B. CHARACTERISTICS OF TRIBUTARY (THAT IS NOT A TNW) AND ITS ADJACENT WETLANDS (IF ANY):

This section summarizes information regarding characteristics of the tributary and its adjacent wetlands, if any, and it helps determine whether or not the standards for jurisdiction established under *Rapanos* have been met.

The agencies will assert jurisdiction over non-navigable tributaries of TNWs where the tributaries are “relatively permanent waters” (RPWs), i.e. tributaries that typically flow year-round or have continuous flow at least seasonally (e.g., typically 3 months). A wetland that directly abuts an RPW is also jurisdictional. If the aquatic resource is not a TNW, but has year-round (perennial) flow, skip to Section III.D.2. If the aquatic resource is a wetland directly abutting a tributary with perennial flow, skip to Section III.D.4.

A wetland that is adjacent to but that does not directly abut an RPW requires a significant nexus evaluation. Corps districts and EPA regions will include in the record any available information that documents the existence of a significant nexus between a relatively permanent tributary that is not perennial (and its adjacent wetlands if any) and a traditional navigable water, even though a significant nexus finding is not required as a matter of law.

If the waterbody<sup>4</sup> is not an RPW, or a wetland directly abutting an RPW, a JD will require additional data to determine if the waterbody has a significant nexus with a TNW. If the tributary has adjacent wetlands, the significant nexus evaluation must consider the tributary in combination with all of its adjacent wetlands. This significant nexus evaluation that combines, for analytical purposes, the tributary and all of its adjacent wetlands is used whether the review area identified in the JD request is the tributary, or its adjacent wetlands, or both. If the JD covers a tributary with adjacent wetlands, complete Section III.B.1 for the tributary, Section III.B.2 for any onsite wetlands, and Section III.B.3 for all wetlands adjacent to that tributary, both onsite and offsite. The determination whether a significant nexus exists is determined in Section III.C below.

1. **Characteristics of non-TNWs that flow directly or indirectly into TNW**

(i) **General Area Conditions:**

Watershed size: 0.10 **square miles**

Drainage area: 0.10 **square miles**

Average annual rainfall: 45.9 inches

Average annual snowfall: 10.9 inches

(ii) **Physical Characteristics:**

(a) **Relationship with TNW:**

☒ Tributary flows directly into TNW.

☐ Tributary flows through **Pick List** tributaries before entering TNW.

Project waters are **Pick List** river miles from TNW.

Project waters are **Pick List** river miles from RPW.

Project waters are **1 (or less)** aerial (straight) miles from TNW.

Project waters are **Pick List** aerial (straight) miles from RPW.

Project waters cross or serve as state boundaries. Explain: .

Identify flow route to TNW<sup>5</sup>: MON-1-S31 at its intersection with Hoffman Blvd. becomes enclosed and connected to the local stormwater infrastructure. This 30-inch enclosure travels downslope, intersecting with a 18-inch enclosure and

<sup>4</sup> Note that the Instructional Guidebook contains additional information regarding swales, ditches, washes, and erosional features generally and in the arid West.

<sup>5</sup> Flow route can be described by identifying, e.g., tributary a, which flows through the review area, to flow into tributary b, which then flows into TNW.

becoming a 48-inch enclosure, towards Kennywood Park where it collects stormwater flow all along the way until it is discharged into the Monongahela River. In Section B.1.(ii) above, I described this tributary as flowing directly into the TNW; however, flow occurs through several stormwater systems before entering the TNW - this is not necessarily made clear in my description of "directly into TNW" but will be noted here.

Tributary stream order, if known: Tributary stream order is unclear given the nature of its interconnectedness with stormwater systems.

(b) General Tributary Characteristics (check all that apply):

Tributary is: ☐ Natural

☐ Artificial (man-made). Explain: .

☒ Manipulated (man-altered). Explain: the stream occurs in a highly urbanized area and has likely been manipulated in the past. Obvious evidence of this is the copious culverts and enclosures found here as input/outputs for the stream, though it is unclear how much of the stream has been altered in the past several hundred years.

**Tributary** properties with respect to top of bank (estimate):

Average width: 3 feet

Average depth: 1 feet

Average side slopes: **3:1** .

Primary tributary substrate composition (check all that apply):

☒ Silts

☐ Sands

☐ Concrete

☒ Cobbles

☒ Gravel

☒ Muck

☐ Bedrock

☐ Vegetation. Type/% cover: varies

☒ Other. Explain: some disposed angular rock and asphalt.

Tributary condition/stability [e.g., highly eroding, sloughing banks]. Explain: Stream is located adjacent to a large parking area and along Hoffman Blvd/Shady Lane. Some erosion is noted adjacent to impervious surfaces and varies along its reach.

Presence of run/riffle/pool complexes. Explain: n/a.

Tributary geometry: **Relatively straight**

Tributary gradient (approximate average slope): 5 %

(c) Flow:

Tributary provides for: **Ephemeral flow**

Estimate average number of flow events in review area/year: **Pick List**

Describe flow regime: Flow occurs in direct response to precipitation.

Other information on duration and volume: Flow input primarily from stormwater and overland flow from adjacent commercial parking and residential areas.

Surface flow is: **Discrete**. Characteristics: Flow is within a non-confined stream channel which becomes less defined as you travel further up its reach.

Subsurface flow: **No**. Explain findings: .

☐ Dye (or other) test performed: .

Tributary has (check all that apply):

☒ Bed and banks

☒ OHWM<sup>6</sup> (check all indicators that apply):

☐ clear, natural line impressed on the bank

☐ changes in the character of soil

☐ shelving

☒ vegetation matted down, bent, or absent

☒ leaf litter disturbed or washed away

☒ sediment deposition

☐ water staining

☐ other (list):

☐ the presence of litter and debris

☐ destruction of terrestrial vegetation

☐ the presence of wrack line

☒ sediment sorting

☒ scour

☐ multiple observed or predicted flow events

☐ abrupt change in plant community

☐ Discontinuous OHWM.<sup>7</sup> Explain: .

If factors other than the OHWM were used to determine lateral extent of CWA jurisdiction (check all that apply):

☐ High Tide Line indicated by:

☐ oil or scum line along shore objects

☐ fine shell or debris deposits (foreshore)

☐ Mean High Water Mark indicated by:

☐ survey to available datum;

☐ physical markings;

<sup>6</sup>A natural or man-made discontinuity in the OHWM does not necessarily sever jurisdiction (e.g., where the stream temporarily flows underground, or where the OHWM has been removed by development or agricultural practices). Where there is a break in the OHWM that is unrelated to the waterbody's flow regime (e.g., flow over a rock outcrop or through a culvert), the agencies will look for indicators of flow above and below the break.

<sup>7</sup>Ibid.

- ☐ physical markings/characteristics
- ☐ tidal gauges
- ☐ other (list):

- ☐ vegetation lines/changes in vegetation types.

**(iii) Chemical Characteristics:**

Characterize tributary (e.g., water color is clear, discolored, oily film; water quality; general watershed characteristics, etc.).

Explain: Stream flow chemical characteristics are strongly influence by rainfall chemical charceristics. Stream receives stormwater flow from adjacent impervious surfaces (commercial/residential roads & parking) and is likely carrying oil, gas, and other potential chemical inputs associated with car parking areas .

Identify specific pollutants, if known: some turbidity is likely given the noted erosion.

**(iv) Biological Characteristics. Channel supports (check all that apply):**

☒ Riparian corridor. Characteristics (type, average width): 5-10 foot adjacent commercial/public infrastructure but 50+ foot on opposite side.

☐ Wetland fringe. Characteristics: .

☐ Habitat for:

☐ Federally Listed species. Explain findings: .

☐ Fish/spawn areas. Explain findings: .

☐ Other environmentally-sensitive species. Explain findings: .

☐ Aquatic/wildlife diversity. Explain findings: .

**2. Characteristics of wetlands adjacent to non-TNW that flow directly or indirectly into TNW**

**(i) Physical Characteristics:**

**(a) General Wetland Characteristics:**

Properties:

Wetland size: acres

Wetland type. Explain: .

Wetland quality. Explain: .

Project wetlands cross or serve as state boundaries. Explain: .

**(b) General Flow Relationship with Non-TNW:**

Flow is: **Pick List**. Explain: .

Surface flow is: **Pick List**

Characteristics: .

Subsurface flow: **Pick List**. Explain findings: .

☐ Dye (or other) test performed: .

**(c) Wetland Adjacency Determination with Non-TNW:**

☐ Directly abutting

☐ Not directly abutting

☐ Discrete wetland hydrologic connection. Explain: .

☐ Ecological connection. Explain: .

☐ Separated by berm/barrier. Explain: .

**(d) Proximity (Relationship) to TNW**

Project wetlands are **Pick List** river miles from TNW.

Project waters are **Pick List** aerial (straight) miles from TNW.

Flow is from: **Pick List**.

Estimate approximate location of wetland as within the **Pick List** floodplain.

**(ii) Chemical Characteristics:**

Characterize wetland system (e.g., water color is clear, brown, oil film on surface; water quality; general watershed characteristics; etc.). Explain: .

Identify specific pollutants, if known: .

**(iii) Biological Characteristics. Wetland supports (check all that apply):**

☐ Riparian buffer. Characteristics (type, average width): .

☐ Vegetation type/percent cover. Explain: .

☐ Habitat for:

☐ Federally Listed species. Explain findings: .

☐ Fish/spawn areas. Explain findings: .

☐ Other environmentally-sensitive species. Explain findings: .

☐ Aquatic/wildlife diversity. Explain findings: .

**3. Characteristics of all wetlands adjacent to the tributary (if any)**

All wetland(s) being considered in the cumulative analysis: **Pick List**

Approximately ( ) acres in total are being considered in the cumulative analysis.



For each wetland, specify the following:

Directly abuts? (Y/N)

Size (in acres)

Directly abuts? (Y/N)

Size (in acres)

Summarize overall biological, chemical and physical functions being performed: .

### C. SIGNIFICANT NEXUS DETERMINATION

A significant nexus analysis will assess the flow characteristics and functions of the tributary itself and the functions performed by any wetlands adjacent to the tributary to determine if they significantly affect the chemical, physical, and biological integrity of a TNW. For each of the following situations, a significant nexus exists if the tributary, in combination with all of its adjacent wetlands, has more than a speculative or insubstantial effect on the chemical, physical and/or biological integrity of a TNW. Considerations when evaluating significant nexus include, but are not limited to the volume, duration, and frequency of the flow of water in the tributary and its proximity to a TNW, and the functions performed by the tributary and all its adjacent wetlands. It is not appropriate to determine significant nexus based solely on any specific threshold of distance (e.g. between a tributary and its adjacent wetland or between a tributary and the TNW). Similarly, the fact an adjacent wetland lies within or outside of a floodplain is not solely determinative of significant nexus.

Draw connections between the features documented and the effects on the TNW, as identified in the *Rapanos* Guidance and discussed in the Instructional Guidebook. Factors to consider include, for example:

- Does the tributary, in combination with its adjacent wetlands (if any), have the capacity to carry pollutants or flood waters to TNWs, or to reduce the amount of pollutants or flood waters reaching a TNW?
- Does the tributary, in combination with its adjacent wetlands (if any), provide habitat and lifecycle support functions for fish and other species, such as feeding, nesting, spawning, or rearing young for species that are present in the TNW?
- Does the tributary, in combination with its adjacent wetlands (if any), have the capacity to transfer nutrients and organic carbon that support downstream foodwebs?
- Does the tributary, in combination with its adjacent wetlands (if any), have other relationships to the physical, chemical, or biological integrity of the TNW?

**Note: the above list of considerations is not inclusive and other functions observed or known to occur should be documented below:**

1. **Significant nexus findings for non-RPW that has no adjacent wetlands and flows directly or indirectly into TNWs.** Explain findings of presence or absence of significant nexus below, based on the tributary itself, then go to Section III.D: MON-1-S31 is an ephemeral stream which flows adjacent to a large commercial parking area and alongside Hoffman Blvd & Shady Lane. This waterway also receives flows from the residential area and Kennywood parking areas just to the north as stormwater input. The waterway enters a 30-inch enclosure at its intersection with Hoffman Blvd. and becomes intermixed with more and more stormwater inputs as the enclosures travel towards Kennywood Park and its associated parking areas and under a wide railroad ROW before entering the TNW. Inputs directly into MON-1-S31 stream feature appear to be a combination of overland flow directly into the stream (during rain events) and stormwater flow from adjacent developed areas. This stream feature drains approximately 0.10 square miles of adjacent upland area. The drainage area is very small and consists of 0.002% of the total area of the HUC12. The drainage area is at the top of its watershed and does not contain additional upstream flow. Water which drains from this area must then flow through stormwater systems the rest of the way downstream before entering the TNW. Physically, the waterway is ephemeral and drains a small area. Biologically, the waterway does not appear to serve much of a service to biota with possibly the exception of seasonal mosquitos. The ephemeral flow of the waterway would not provide habitat for aquatic biota nor a wide range of macroinvertebrates. Chemically, the stream transports water during precipitation events. Given the stormwater inputs from adjacent parking areas, it is likely that this waterway has the potential to transport some chemical pollutants associated with parked cars (oil, gas, etc.). The chemical contribution to the downstream TNW, however, is insignificant given the smallness of the drainage area, the indistinguishable nature of the chemical inputs directly into MON-1-S31 from its downstream stormwater inputs (i.e. Kennywood area drainage), and the largeness of the downstream TNW's flow compared to MON-1-S31's flow.
2. **Significant nexus findings for non-RPW and its adjacent wetlands, where the non-RPW flows directly or indirectly into TNWs.** Explain findings of presence or absence of significant nexus below, based on the tributary in combination with all of its adjacent wetlands, then go to Section III.D: .
3. **Significant nexus findings for wetlands adjacent to an RPW but that do not directly abut the RPW.** Explain findings of presence or absence of significant nexus below, based on the tributary in combination with all of its adjacent wetlands, then go to Section III.D: .

**D. DETERMINATIONS OF JURISDICTIONAL FINDINGS. THE SUBJECT WATERS/WETLANDS ARE (CHECK ALL THAT APPLY):**

**1. TNWs and Adjacent Wetlands.** Check all that apply and provide size estimates in review area:

- ☐ TNWs: linear feet width (ft), Or, acres.  
☐ Wetlands adjacent to TNWs: acres.

**2. RPWs that flow directly or indirectly into TNWs.**

- ☐ Tributaries of TNWs where tributaries typically flow year-round are jurisdictional. Provide data and rationale indicating that tributary is perennial: .  
☐ Tributaries of TNW where tributaries have continuous flow “seasonally” (e.g., typically three months each year) are jurisdictional. Data supporting this conclusion is provided at Section III.B. Provide rationale indicating that tributary flows seasonally: .

Provide estimates for jurisdictional waters in the review area (check all that apply):

- ☐ Tributary waters: linear feet width (ft).  
☐ Other non-wetland waters: acres.  
Identify type(s) of waters: .

**3. Non-RPWs<sup>8</sup> that flow directly or indirectly into TNWs.**

- ☐ Waterbody that is not a TNW or an RPW, but flows directly or indirectly into a TNW, and it has a significant nexus with a TNW is jurisdictional. Data supporting this conclusion is provided at Section III.C.

Provide estimates for jurisdictional waters within the review area (check all that apply):

- ☐ Tributary waters: linear feet width (ft).  
☐ Other non-wetland waters: acres.  
Identify type(s) of waters: .

**4. Wetlands directly abutting an RPW that flow directly or indirectly into TNWs.**

- ☐ Wetlands directly abut RPW and thus are jurisdictional as adjacent wetlands.  
☐ Wetlands directly abutting an RPW where tributaries typically flow year-round. Provide data and rationale indicating that tributary is perennial in Section III.D.2, above. Provide rationale indicating that wetland is directly abutting an RPW: .  
☐ Wetlands directly abutting an RPW where tributaries typically flow “seasonally.” Provide data indicating that tributary is seasonal in Section III.B and rationale in Section III.D.2, above. Provide rationale indicating that wetland is directly abutting an RPW: .

Provide acreage estimates for jurisdictional wetlands in the review area: acres.

**5. Wetlands adjacent to but not directly abutting an RPW that flow directly or indirectly into TNWs.**

- ☐ Wetlands that do not directly abut an RPW, but when considered in combination with the tributary to which they are adjacent and with similarly situated adjacent wetlands, have a significant nexus with a TNW are jurisdictional. Data supporting this conclusion is provided at Section III.C.

Provide acreage estimates for jurisdictional wetlands in the review area: acres.

**6. Wetlands adjacent to non-RPWs that flow directly or indirectly into TNWs.**

- ☐ Wetlands adjacent to such waters, and have when considered in combination with the tributary to which they are adjacent and with similarly situated adjacent wetlands, have a significant nexus with a TNW are jurisdictional. Data supporting this conclusion is provided at Section III.C.

Provide estimates for jurisdictional wetlands in the review area: acres.

**7. Impoundments of jurisdictional waters.<sup>9</sup>**

As a general rule, the impoundment of a jurisdictional tributary remains jurisdictional.

- ☐ Demonstrate that impoundment was created from “waters of the U.S.,” or

<sup>8</sup>See Footnote # 3.

<sup>9</sup> To complete the analysis refer to the key in Section III.D.6 of the Instructional Guidebook.

- ☐ Demonstrate that water meets the criteria for one of the categories presented above (1-6), or  
☐ Demonstrate that water is isolated with a nexus to commerce (see E below).

**E. ISOLATED [INTERSTATE OR INTRA-STATE] WATERS, INCLUDING ISOLATED WETLANDS, THE USE, DEGRADATION OR DESTRUCTION OF WHICH COULD AFFECT INTERSTATE COMMERCE, INCLUDING ANY SUCH WATERS (CHECK ALL THAT APPLY):<sup>10</sup>**

- ☐ which are or could be used by interstate or foreign travelers for recreational or other purposes.  
☐ from which fish or shellfish are or could be taken and sold in interstate or foreign commerce.  
☐ which are or could be used for industrial purposes by industries in interstate commerce.  
☐ Interstate isolated waters. Explain: .  
☐ Other factors. Explain: .

**Identify water body and summarize rationale supporting determination:** .

Provide estimates for jurisdictional waters in the review area (check all that apply):

- ☐ Tributary waters: linear feet width (ft).  
☐ Other non-wetland waters: acres.  
 Identify type(s) of waters: .  
☐ Wetlands: acres.

**F. NON-JURISDICTIONAL WATERS, INCLUDING WETLANDS (CHECK ALL THAT APPLY):**

- ☐ If potential wetlands were assessed within the review area, these areas did not meet the criteria in the 1987 Corps of Engineers Wetland Delineation Manual and/or appropriate Regional Supplements.  
☐ Review area included isolated waters with no substantial nexus to interstate (or foreign) commerce.  
☐ Prior to the Jan 2001 Supreme Court decision in “*SWANCC*,” the review area would have been regulated based solely on the “Migratory Bird Rule” (MBR).  
☒ Waters do not meet the “Significant Nexus” standard, where such a finding is required for jurisdiction. Explain: **Waters which flow from MON-1-S31 have no physical or biological nexus to downstream TNWs; however, a chemical nexus has some potential to occur. It has been determined that this chemical nexus is discountable given reasons stated in Section C.1. above. Given the stream is absent any significant nexus to downstream TNWs, it has been determined that MON-1-S31 is not a jurisdictional water.**  
☐ Other: (explain, if not covered above): .

Provide acreage estimates for non-jurisdictional waters in the review area, where the sole potential basis of jurisdiction is the MBR factors (i.e., presence of migratory birds, presence of endangered species, use of water for irrigated agriculture), using best professional judgment (check all that apply):

- ☐ Non-wetland waters (i.e., rivers, streams): linear feet width (ft).  
☐ Lakes/ponds: acres.  
☐ Other non-wetland waters: acres. List type of aquatic resource: .  
☐ Wetlands: acres.

Provide acreage estimates for non-jurisdictional waters in the review area that do not meet the “Significant Nexus” standard, where such a finding is required for jurisdiction (check all that apply):

- ☒ Non-wetland waters (i.e., rivers, streams): **466** linear feet, **2-4** width (ft).  
☐ Lakes/ponds: acres.  
☐ Other non-wetland waters: acres. List type of aquatic resource: .  
☐ Wetlands: acres.

**SECTION IV: DATA SOURCES.**

**A. SUPPORTING DATA. Data reviewed for JD (check all that apply - checked items shall be included in case file and, where checked and requested, appropriately reference sources below):**

- ☒ Maps, plans, plots or plat submitted by or on behalf of the applicant/consultant: 53C2 project plans; Delineation Report (with addendums).  
☐ Data sheets prepared/submitted by or on behalf of the applicant/consultant.  
☐ Office concurs with data sheets/delineation report.  
☐ Office does not concur with data sheets/delineation report.

<sup>10</sup> Prior to asserting or declining CWA jurisdiction based solely on this category, Corps Districts will elevate the action to Corps and EPA HQ for review consistent with the process described in the Corps/EPA Memorandum Regarding CWA Act Jurisdiction Following Rapanos.

- ☐ Data sheets prepared by the Corps: .
- ☐ Corps navigable waters' study: .
- ☒ U.S. Geological Survey Hydrologic Atlas: .
  - ☒ USGS NHD data.
  - ☒ USGS 8 and 12 digit HUC maps.
- ☒ U.S. Geological Survey map(s). Cite scale & quad name: Braddock 2019.
- ☐ USDA Natural Resources Conservation Service Soil Survey. Citation: .
- ☒ National wetlands inventory map(s). Cite name: USFWS "Wetlands Mapper".
- ☐ State/Local wetland inventory map(s): .
- ☐ FEMA/FIRM maps: .
- ☐ 100-year Floodplain Elevation is: (National Geodetic Vertical Datum of 1929)
- ☒ Photographs: ☒ Aerial (Name & Date): Google Earth: Oct. 2020.  
or ☒ Other (Name & Date): Site photos provided with Delineation Reports; Corps on-site photographs Oct. 2021.
- ☐ Previous determination(s). File no. and date of response letter: .
- ☐ Applicable/supporting case law: .
- ☐ Applicable/supporting scientific literature: .
- ☐ Other information (please specify): .

**B. ADDITIONAL COMMENTS TO SUPPORT JD:** No flowing water was observed during the 28 Oct. 2021 site visit. Antecedent Precipitation Tool (APT) was utilized to determine whether conditions were within the normal range of climatic conditions on the day of the site visit. According to the APT, rainfall for the previous 30-day period was within the 30-year normal range of precipitation. This visit occurred during the wet season with conditions for the previous 90 days rated as "wetter than normal". This visit did not occur during a drought or on the heels of a large rain event which could have adversely affected observations on the day of the site visit.



**APPROVED JURISDICTIONAL DETERMINATION FORM**  
**U.S. Army Corps of Engineers**

This form should be completed by following the instructions provided in Section IV of the JD Form Instructional Guidebook.

**SECTION I: BACKGROUND INFORMATION**

**A. REPORT COMPLETION DATE FOR APPROVED JURISDICTIONAL DETERMINATION (JD): 29 November 2021**

**B. DISTRICT OFFICE, FILE NAME, AND NUMBER: CELRP-RG-S 2020-00329**

**C. PROJECT LOCATION AND BACKGROUND INFORMATION:**

State: PA County/parish/borough: Allegheny City: West Mifflin  
Center coordinates of site (lat/long in degree decimal format): Lat. 40.381719° N, Long. -79.871094° W.  
Universal Transverse Mercator: 17S: 595825, 4470737

Name of nearest waterbody: Monongahela River

Name of nearest Traditional Navigable Water (TNW) into which the aquatic resource flows: Monongahela River

Name of watershed or Hydrologic Unit Code (HUC): HUC12: 050200050808, Streets Run-Monongahela River

☒ Check if map/diagram of review area and/or potential jurisdictional areas is/are available upon request.

☐ Check if other sites (e.g., offsite mitigation sites, disposal sites, etc...) are associated with this action and are recorded on a different JD form.

**D. REVIEW PERFORMED FOR SITE EVALUATION (CHECK ALL THAT APPLY):**

☒ Office (Desk) Determination. Date: 29 November 2021

☒ Field Determination. Date(s): 28 October 2021

**SECTION II: SUMMARY OF FINDINGS**

**A. RHA SECTION 10 DETERMINATION OF JURISDICTION.**

There **Are no** "navigable waters of the U.S." within Rivers and Harbors Act (RHA) jurisdiction (as defined by 33 CFR part 329) in the review area. [Required]

☐ Waters subject to the ebb and flow of the tide.

☐ Waters are presently used, or have been used in the past, or may be susceptible for use to transport interstate or foreign commerce.

Explain: .

**B. CWA SECTION 404 DETERMINATION OF JURISDICTION.**

There **Are no** "waters of the U.S." within Clean Water Act (CWA) jurisdiction (as defined by 33 CFR part 328) in the review area. [Required]

**1. Waters of the U.S.**

**a. Indicate presence of waters of U.S. in review area (check all that apply):<sup>1</sup>**

- ☐ TNWs, including territorial seas
- ☐ Wetlands adjacent to TNWs
- ☐ Relatively permanent waters<sup>2</sup> (RPWs) that flow directly or indirectly into TNWs
- ☐ Non-RPWs that flow directly or indirectly into TNWs
- ☐ Wetlands directly abutting RPWs that flow directly or indirectly into TNWs
- ☐ Wetlands adjacent to but not directly abutting RPWs that flow directly or indirectly into TNWs
- ☐ Wetlands adjacent to non-RPWs that flow directly or indirectly into TNWs
- ☐ Impoundments of jurisdictional waters
- ☐ Isolated (interstate or intrastate) waters, including isolated wetlands

**b. Identify (estimate) size of waters of the U.S. in the review area:**

Non-wetland waters: linear feet: width (ft) and/or acres.

Wetlands: n/a acres.

**c. Limits (boundaries) of jurisdiction based on: Pick List**

Elevation of established OHWM (if known): .

**2. Non-regulated waters/wetlands (check if applicable):<sup>3</sup>**

☒ Potentially jurisdictional waters and/or wetlands were assessed within the review area and determined to be not jurisdictional.

Explain: MON-1-S32 flows into the Monongahela River but lacks a significant nexus to this downstream TNW.

<sup>1</sup> Boxes checked below shall be supported by completing the appropriate sections in Section III below.

<sup>2</sup> For purposes of this form, an RPW is defined as a tributary that is not a TNW and that typically flows year-round or has continuous flow at least "seasonally" (e.g., typically 3 months).

<sup>3</sup> Supporting documentation is presented in Section III.F.

### SECTION III: CWA ANALYSIS

#### A. TNWs AND WETLANDS ADJACENT TO TNWs

The agencies will assert jurisdiction over TNWs and wetlands adjacent to TNWs. If the aquatic resource is a TNW, complete Section III.A.1 and Section III.D.1. only; if the aquatic resource is a wetland adjacent to a TNW, complete Sections III.A.1 and 2 and Section III.D.1.; otherwise, see Section III.B below.

1. **TNW**

Identify TNW: .

Summarize rationale supporting determination: .

2. **Wetland adjacent to TNW**

Summarize rationale supporting conclusion that wetland is “adjacent”: .

#### B. CHARACTERISTICS OF TRIBUTARY (THAT IS NOT A TNW) AND ITS ADJACENT WETLANDS (IF ANY):

This section summarizes information regarding characteristics of the tributary and its adjacent wetlands, if any, and it helps determine whether or not the standards for jurisdiction established under *Rapanos* have been met.

The agencies will assert jurisdiction over non-navigable tributaries of TNWs where the tributaries are “relatively permanent waters” (RPWs), i.e. tributaries that typically flow year-round or have continuous flow at least seasonally (e.g., typically 3 months). A wetland that directly abuts an RPW is also jurisdictional. If the aquatic resource is not a TNW, but has year-round (perennial) flow, skip to Section III.D.2. If the aquatic resource is a wetland directly abutting a tributary with perennial flow, skip to Section III.D.4.

A wetland that is adjacent to but that does not directly abut an RPW requires a significant nexus evaluation. Corps districts and EPA regions will include in the record any available information that documents the existence of a significant nexus between a relatively permanent tributary that is not perennial (and its adjacent wetlands if any) and a traditional navigable water, even though a significant nexus finding is not required as a matter of law.

If the waterbody<sup>4</sup> is not an RPW, or a wetland directly abutting an RPW, a JD will require additional data to determine if the waterbody has a significant nexus with a TNW. If the tributary has adjacent wetlands, the significant nexus evaluation must consider the tributary in combination with all of its adjacent wetlands. This significant nexus evaluation that combines, for analytical purposes, the tributary and all of its adjacent wetlands is used whether the review area identified in the JD request is the tributary, or its adjacent wetlands, or both. If the JD covers a tributary with adjacent wetlands, complete Section III.B.1 for the tributary, Section III.B.2 for any onsite wetlands, and Section III.B.3 for all wetlands adjacent to that tributary, both onsite and offsite. The determination whether a significant nexus exists is determined in Section III.C below.

1. **Characteristics of non-TNWs that flow directly or indirectly into TNW**

(i) **General Area Conditions:**

Watershed size: 0.04 **square miles**

Drainage area: 0.04 **square miles**

Average annual rainfall: 45.9 inches

Average annual snowfall: 10.9 inches

(ii) **Physical Characteristics:**

(a) **Relationship with TNW:**

☒ Tributary flows directly into TNW.

☐ Tributary flows through **Pick List** tributaries before entering TNW.

Project waters are **Pick List** river miles from TNW.

Project waters are **Pick List** river miles from RPW.

Project waters are **1 (or less)** aerial (straight) miles from TNW.

Project waters are **Pick List** aerial (straight) miles from RPW.

Project waters cross or serve as state boundaries. Explain: .

Identify flow route to TNW<sup>5</sup>: MON-1-S32 at its intersection with Hoffman Blvd. becomes enclosed and connected to the local stormwater infrastructure. This 18-inch enclosure travels downslope, intersecting with a 30-inch enclosure and

<sup>4</sup> Note that the Instructional Guidebook contains additional information regarding swales, ditches, washes, and erosional features generally and in the arid West.

<sup>5</sup> Flow route can be described by identifying, e.g., tributary a, which flows through the review area, to flow into tributary b, which then flows into TNW.

becoming a 48-inch enclosure, towards Kennywood Park where it collects stormwater flow all along the way until it is discharged into the Monongahela River. In Section B.1.(ii) above, I described this tributary as flowing directly into the TNW; however, flow occurs through several stormwater systems before entering the TNW - this is not necessarily made clear in my description of "directly into TNW" but will be noted here.

Tributary stream order, if known: Tributary stream order is unclear given the nature of its interconnectedness with stormwater systems.

(b) General Tributary Characteristics (check all that apply):

Tributary is: ☐ Natural

☐ Artificial (man-made). Explain: .

☒ Manipulated (man-altered). Explain: the stream occurs in a highly urbanized area and has likely been manipulated in the past. Obvious evidence of this is the copious culverts and enclosures found here as input/outputs for the stream, though it is unclear how much of the stream has been altered in the past several hundred years.

Tributary properties with respect to top of bank (estimate):

Average width: 4.5 feet

Average depth: 1 feet

Average side slopes: **2:1**.

Primary tributary substrate composition (check all that apply):

☒ Silts

☐ Sands

☐ Concrete

☒ Cobbles

☐ Gravel

☒ Muck

☐ Bedrock

☐ Vegetation. Type/% cover: varies

☐ Other. Explain: .

Tributary condition/stability [e.g., highly eroding, sloughing banks]. Explain: Streambank sloughing severely adjacent to roadway, though the rest of the upstream portions appear relatively stable.

Presence of run/riffle/pool complexes. Explain: n/a.

Tributary geometry: **Relatively straight**

Tributary gradient (approximate average slope): 6 %

(c) Flow:

Tributary provides for: **Ephemeral flow**

Estimate average number of flow events in review area/year: **Pick List**

Describe flow regime: Flow occurs in direct response to precipitation.

Other information on duration and volume: Flow input from adjacent uplands and stormwater drainage from West Mifflin High School.

Surface flow is: **Pick List**. Characteristics: Surface flow consists of a combination of overland/sheet flow and discrete/confined channel flow.

Subsurface flow: **Unknown**. Explain findings: .

☐ Dye (or other) test performed: .

Tributary has (check all that apply):

☒ Bed and banks

☐ OHWM<sup>6</sup> (check all indicators that apply):

☐ clear, natural line impressed on the bank

☐ changes in the character of soil

☒ shelving

☒ vegetation matted down, bent, or absent

☒ leaf litter disturbed or washed away

☐ sediment deposition

☐ water staining

☐ other (list):

☐ the presence of litter and debris

☐ destruction of terrestrial vegetation

☐ the presence of wrack line

☒ sediment sorting

☒ scour

☐ multiple observed or predicted flow events

☐ abrupt change in plant community

☐ Discontinuous OHWM.<sup>7</sup> Explain: .

If factors other than the OHWM were used to determine lateral extent of CWA jurisdiction (check all that apply):

☐ High Tide Line indicated by:

☐ oil or scum line along shore objects

☐ fine shell or debris deposits (foreshore)

☐ Mean High Water Mark indicated by:

☐ survey to available datum;

☐ physical markings;

<sup>6</sup>A natural or man-made discontinuity in the OHWM does not necessarily sever jurisdiction (e.g., where the stream temporarily flows underground, or where the OHWM has been removed by development or agricultural practices). Where there is a break in the OHWM that is unrelated to the waterbody's flow regime (e.g., flow over a rock outcrop or through a culvert), the agencies will look for indicators of flow above and below the break.

<sup>7</sup>Ibid.

- ☐ physical markings/characteristics
- ☐ tidal gauges
- ☐ other (list):

☐ vegetation lines/changes in vegetation types.

**(iii) Chemical Characteristics:**

Characterize tributary (e.g., water color is clear, discolored, oily film; water quality; general watershed characteristics, etc.).

Explain: Stream flow chemical characteristics are strongly influence by rainfall chemical charceristics. Stream receives stormwater flow from high school's impervious surfaces and is likely carrying oil, gas, and other potential chemical inputs associated with car parking areas .

Identify specific pollutants, if known: turbidity likely given observed erosion and stormwater likely carries pollutants associated with parking areas.



(iv) **Biological Characteristics. Channel supports (check all that apply):**

- ☒ Riparian corridor. Characteristics (type, average width): 50 foot.
- ☐ Wetland fringe. Characteristics: .
- ☐ Habitat for:
  - ☐ Federally Listed species. Explain findings: .
  - ☐ Fish/spawn areas. Explain findings: .
  - ☐ Other environmentally-sensitive species. Explain findings: .
  - ☐ Aquatic/wildlife diversity. Explain findings: .

2. **Characteristics of wetlands adjacent to non-TNW that flow directly or indirectly into TNW**

(i) **Physical Characteristics:**

(a) General Wetland Characteristics:

Properties:

Wetland size: acres

Wetland type. Explain: .

Wetland quality. Explain: .

Project wetlands cross or serve as state boundaries. Explain: .

(b) General Flow Relationship with Non-TNW:

Flow is: **Pick List**. Explain: .

Surface flow is: **Pick List**

Characteristics: .

Subsurface flow: **Pick List**. Explain findings: .

☐ Dye (or other) test performed: .

(c) Wetland Adjacency Determination with Non-TNW:

☐ Directly abutting

☐ Not directly abutting

☐ Discrete wetland hydrologic connection. Explain: .

☐ Ecological connection. Explain: .

☐ Separated by berm/barrier. Explain: .

(d) Proximity (Relationship) to TNW

Project wetlands are **Pick List** river miles from TNW.

Project waters are **Pick List** aerial (straight) miles from TNW.

Flow is from: **Pick List**.

Estimate approximate location of wetland as within the **Pick List** floodplain.

(ii) **Chemical Characteristics:**

Characterize wetland system (e.g., water color is clear, brown, oil film on surface; water quality; general watershed characteristics; etc.). Explain: .

Identify specific pollutants, if known: .

(iii) **Biological Characteristics. Wetland supports (check all that apply):**

- ☐ Riparian buffer. Characteristics (type, average width): .
- ☐ Vegetation type/percent cover. Explain: .
- ☐ Habitat for:
  - ☐ Federally Listed species. Explain findings: .
  - ☐ Fish/spawn areas. Explain findings: .
  - ☐ Other environmentally-sensitive species. Explain findings: .
  - ☐ Aquatic/wildlife diversity. Explain findings: .

3. **Characteristics of all wetlands adjacent to the tributary (if any)**

All wetland(s) being considered in the cumulative analysis: **Pick List**

Approximately ( ) acres in total are being considered in the cumulative analysis.

For each wetland, specify the following:

Directly abuts? (Y/N)

Size (in acres)

Directly abuts? (Y/N)

Size (in acres)

Summarize overall biological, chemical and physical functions being performed: .

### C. SIGNIFICANT NEXUS DETERMINATION

A significant nexus analysis will assess the flow characteristics and functions of the tributary itself and the functions performed by any wetlands adjacent to the tributary to determine if they significantly affect the chemical, physical, and biological integrity of a TNW. For each of the following situations, a significant nexus exists if the tributary, in combination with all of its adjacent wetlands, has more than a speculative or insubstantial effect on the chemical, physical and/or biological integrity of a TNW. Considerations when evaluating significant nexus include, but are not limited to the volume, duration, and frequency of the flow of water in the tributary and its proximity to a TNW, and the functions performed by the tributary and all its adjacent wetlands. It is not appropriate to determine significant nexus based solely on any specific threshold of distance (e.g. between a tributary and its adjacent wetland or between a tributary and the TNW). Similarly, the fact an adjacent wetland lies within or outside of a floodplain is not solely determinative of significant nexus.

Draw connections between the features documented and the effects on the TNW, as identified in the *Rapanos* Guidance and discussed in the Instructional Guidebook. Factors to consider include, for example:

- Does the tributary, in combination with its adjacent wetlands (if any), have the capacity to carry pollutants or flood waters to TNWs, or to reduce the amount of pollutants or flood waters reaching a TNW?
- Does the tributary, in combination with its adjacent wetlands (if any), provide habitat and lifecycle support functions for fish and other species, such as feeding, nesting, spawning, or rearing young for species that are present in the TNW?
- Does the tributary, in combination with its adjacent wetlands (if any), have the capacity to transfer nutrients and organic carbon that support downstream foodwebs?
- Does the tributary, in combination with its adjacent wetlands (if any), have other relationships to the physical, chemical, or biological integrity of the TNW?

**Note: the above list of considerations is not inclusive and other functions observed or known to occur should be documented below:**

1. **Significant nexus findings for non-RPW that has no adjacent wetlands and flows directly or indirectly into TNWs.** Explain findings of presence or absence of significant nexus below, based on the tributary itself, then go to Section III.D: MON-1-S32 is an ephemeral stream which is broken into two separate pieces - each showing evidence of ephemeral flow being the dominating flow regime. Flow within the stream must pass as overland sheet flow before entering the second stretch of stream. Flow then enters into stormwater enclosures. At this point, flow becomes intermixed with more and more stormwater inputs as the enclosures travel northeast towards Kennywood Park and its associated parking areas and under a wide railroad ROW before entering the TNW. Inputs directly into the MON-1-S32 stream feature appear to come primarily from West Mifflin High School stormwater outputs as well as overland flow from Hoffman Blvd and Commonwealth Ave. This stream feature drains approximately 0.05 square miles of adjacent upland area (including drainage of stormwater from the high school). The drainage area is very small and consists of 0.0008% of the total area of the HUC12. The drainage area is at the top of its watershed and does not contain additional upstream flow. Water which drains from this area must then flow through stormwater systems the rest of the way downstream before entering the TNW. Physically, the waterway is ephemeral and drains a small area. Biologically, the waterway does not appear to serve much of a service to biota with possibly the exception of seasonal mosquitos. The ephemeral flow of the waterway would not provide habitat for aquatic biota nor a wide range of macroinvertebrates. Chemically, the stream transports water during precipitation events. Given the stormwater inputs from adjacent parking areas, it is likely that this waterway has the potential to transport some chemical pollutants associated with parked cars (oil, gas, etc.). The chemical contribution to the downstream TNW, however, is insignificant given the smallness of the drainage area, the indistinguishable nature of the chemical inputs directly into MON-1-S32 from its downstream stormwater inputs (i.e. Kennywood area drainage), and the largeness of the downstream TNW's flow compared to MON-1-S32's flow.
2. **Significant nexus findings for non-RPW and its adjacent wetlands, where the non-RPW flows directly or indirectly into TNWs.** Explain findings of presence or absence of significant nexus below, based on the tributary in combination with all of its adjacent wetlands, then go to Section III.D: .
3. **Significant nexus findings for wetlands adjacent to an RPW but that do not directly abut the RPW.** Explain findings of presence or absence of significant nexus below, based on the tributary in combination with all of its adjacent wetlands, then go to Section III.D: .

**D. DETERMINATIONS OF JURISDICTIONAL FINDINGS. THE SUBJECT WATERS/WETLANDS ARE (CHECK ALL THAT APPLY):**

**1. TNWs and Adjacent Wetlands.** Check all that apply and provide size estimates in review area:

- ☐ TNWs: linear feet width (ft), Or, acres.  
☐ Wetlands adjacent to TNWs: acres.

**2. RPWs that flow directly or indirectly into TNWs.**

- ☐ Tributaries of TNWs where tributaries typically flow year-round are jurisdictional. Provide data and rationale indicating that tributary is perennial: .  
☐ Tributaries of TNW where tributaries have continuous flow “seasonally” (e.g., typically three months each year) are jurisdictional. Data supporting this conclusion is provided at Section III.B. Provide rationale indicating that tributary flows seasonally: .

Provide estimates for jurisdictional waters in the review area (check all that apply):

- ☐ Tributary waters: linear feet width (ft).  
☐ Other non-wetland waters: acres.  
Identify type(s) of waters: .

**3. Non-RPWs<sup>8</sup> that flow directly or indirectly into TNWs.**

- ☐ Waterbody that is not a TNW or an RPW, but flows directly or indirectly into a TNW, and it has a significant nexus with a TNW is jurisdictional. Data supporting this conclusion is provided at Section III.C.

Provide estimates for jurisdictional waters within the review area (check all that apply):

- ☐ Tributary waters: linear feet width (ft).  
☐ Other non-wetland waters: acres.  
Identify type(s) of waters: .

**4. Wetlands directly abutting an RPW that flow directly or indirectly into TNWs.**

- ☐ Wetlands directly abut RPW and thus are jurisdictional as adjacent wetlands.  
☐ Wetlands directly abutting an RPW where tributaries typically flow year-round. Provide data and rationale indicating that tributary is perennial in Section III.D.2, above. Provide rationale indicating that wetland is directly abutting an RPW: .  
☐ Wetlands directly abutting an RPW where tributaries typically flow “seasonally.” Provide data indicating that tributary is seasonal in Section III.B and rationale in Section III.D.2, above. Provide rationale indicating that wetland is directly abutting an RPW: .

Provide acreage estimates for jurisdictional wetlands in the review area: acres.

**5. Wetlands adjacent to but not directly abutting an RPW that flow directly or indirectly into TNWs.**

- ☐ Wetlands that do not directly abut an RPW, but when considered in combination with the tributary to which they are adjacent and with similarly situated adjacent wetlands, have a significant nexus with a TNW are jurisdictional. Data supporting this conclusion is provided at Section III.C.

Provide acreage estimates for jurisdictional wetlands in the review area: acres.

**6. Wetlands adjacent to non-RPWs that flow directly or indirectly into TNWs.**

- ☐ Wetlands adjacent to such waters, and have when considered in combination with the tributary to which they are adjacent and with similarly situated adjacent wetlands, have a significant nexus with a TNW are jurisdictional. Data supporting this conclusion is provided at Section III.C.

Provide estimates for jurisdictional wetlands in the review area: acres.

**7. Impoundments of jurisdictional waters.<sup>9</sup>**

As a general rule, the impoundment of a jurisdictional tributary remains jurisdictional.

- ☐ Demonstrate that impoundment was created from “waters of the U.S.,” or

<sup>8</sup>See Footnote # 3.

<sup>9</sup> To complete the analysis refer to the key in Section III.D.6 of the Instructional Guidebook.

- ☐ Demonstrate that water meets the criteria for one of the categories presented above (1-6), or  
☐ Demonstrate that water is isolated with a nexus to commerce (see E below).

**E. ISOLATED [INTERSTATE OR INTRA-STATE] WATERS, INCLUDING ISOLATED WETLANDS, THE USE, DEGRADATION OR DESTRUCTION OF WHICH COULD AFFECT INTERSTATE COMMERCE, INCLUDING ANY SUCH WATERS (CHECK ALL THAT APPLY):<sup>10</sup>**

- ☐ which are or could be used by interstate or foreign travelers for recreational or other purposes.  
☐ from which fish or shellfish are or could be taken and sold in interstate or foreign commerce.  
☐ which are or could be used for industrial purposes by industries in interstate commerce.  
☐ Interstate isolated waters. Explain: .  
☐ Other factors. Explain: .

**Identify water body and summarize rationale supporting determination:** .

Provide estimates for jurisdictional waters in the review area (check all that apply):

- ☐ Tributary waters: linear feet width (ft).  
☐ Other non-wetland waters: acres.  
 Identify type(s) of waters: .  
☐ Wetlands: acres.

**F. NON-JURISDICTIONAL WATERS, INCLUDING WETLANDS (CHECK ALL THAT APPLY):**

- ☐ If potential wetlands were assessed within the review area, these areas did not meet the criteria in the 1987 Corps of Engineers Wetland Delineation Manual and/or appropriate Regional Supplements.  
☐ Review area included isolated waters with no substantial nexus to interstate (or foreign) commerce.  
☐ Prior to the Jan 2001 Supreme Court decision in “*SWANCC*,” the review area would have been regulated based solely on the “Migratory Bird Rule” (MBR).  
☒ Waters do not meet the “Significant Nexus” standard, where such a finding is required for jurisdiction. Explain: **Waters which flow from MON-1-S32 have no physical or biological nexus to downstream TNWs; however, a chemical nexus has some potential to occur. It has been determined that this chemical nexus is discountable given reasons stated in Section C.1. above. Given the stream is absent any significant nexus to downstream TNWs, it has been determined that MON-1-S32 is not a jurisdictional water.**  
☐ Other: (explain, if not covered above): .

Provide acreage estimates for non-jurisdictional waters in the review area, where the sole potential basis of jurisdiction is the MBR factors (i.e., presence of migratory birds, presence of endangered species, use of water for irrigated agriculture), using best professional judgment (check all that apply):

- ☐ Non-wetland waters (i.e., rivers, streams): linear feet width (ft).  
☐ Lakes/ponds: acres.  
☐ Other non-wetland waters: acres. List type of aquatic resource: .  
☐ Wetlands: acres.

Provide acreage estimates for non-jurisdictional waters in the review area that do not meet the “Significant Nexus” standard, where such a finding is required for jurisdiction (check all that apply):

- ☒ Non-wetland waters (i.e., rivers, streams): **464** linear feet, **3-6** width (ft).  
☐ Lakes/ponds: acres.  
☐ Other non-wetland waters: acres. List type of aquatic resource: .  
☐ Wetlands: acres.

**SECTION IV: DATA SOURCES.**

**A. SUPPORTING DATA. Data reviewed for JD (check all that apply - checked items shall be included in case file and, where checked and requested, appropriately reference sources below):**

- ☒ Maps, plans, plots or plat submitted by or on behalf of the applicant/consultant: 53C2 project plans; Delineation Report (with addendums).  
☐ Data sheets prepared/submitted by or on behalf of the applicant/consultant.  
☐ Office concurs with data sheets/delineation report.  
☐ Office does not concur with data sheets/delineation report.

<sup>10</sup> Prior to asserting or declining CWA jurisdiction based solely on this category, Corps Districts will elevate the action to Corps and EPA HQ for review consistent with the process described in the Corps/EPA Memorandum Regarding CWA Act Jurisdiction Following Rapanos.

- ☐ Data sheets prepared by the Corps: .
- ☐ Corps navigable waters' study: .
- ☒ U.S. Geological Survey Hydrologic Atlas: .
  - ☒ USGS NHD data.
  - ☒ USGS 8 and 12 digit HUC maps.
- ☒ U.S. Geological Survey map(s). Cite scale & quad name: Braddock 2019.
- ☐ USDA Natural Resources Conservation Service Soil Survey. Citation: .
- ☒ National wetlands inventory map(s). Cite name: USFWS "Wetlands Mapper".
- ☐ State/Local wetland inventory map(s): .
- ☐ FEMA/FIRM maps: .
- ☐ 100-year Floodplain Elevation is: (National Geodetic Vertical Datum of 1929)
- ☒ Photographs: ☒ Aerial (Name & Date): Google Earth: Oct. 2020.  
or ☒ Other (Name & Date): Site photos provided with Delineation Reports; Corps on-site photographs Oct. 2021.
- ☐ Previous determination(s). File no. and date of response letter: .
- ☐ Applicable/supporting case law: .
- ☐ Applicable/supporting scientific literature: .
- ☐ Other information (please specify): .

**B. ADDITIONAL COMMENTS TO SUPPORT JD:** No flowing water was observed during the 28 Oct. 2021 site visit. Antecedent Precipitation Tool (APT) was utilized to determine whether conditions were within the normal range of climatic conditions on the day of the site visit. According to the APT, rainfall for the previous 30-day period was within the 30-year normal range of precipitation. This visit occurred during the wet season with conditions for the previous 90 days rated as "wetter than normal". This visit did not occur during a drought or on the heels of a large rain event which could have adversely affected observations on the day of the site visit.

**APPROVED JURISDICTIONAL DETERMINATION FORM**  
**U.S. Army Corps of Engineers**

This form should be completed by following the instructions provided in Section IV of the JD Form Instructional Guidebook.

**SECTION I: BACKGROUND INFORMATION**

**A. REPORT COMPLETION DATE FOR APPROVED JURISDICTIONAL DETERMINATION (JD): 17 December 2021**

**B. DISTRICT OFFICE, FILE NAME, AND NUMBER: CELRP-RG-S 2020-00329**

**C. PROJECT LOCATION AND BACKGROUND INFORMATION:**

State: PA County/parish/borough: Allegheny City: West Mifflin  
Center coordinates of site (lat/long in degree decimal format): Lat. 40.381783° **N**, Long. -79.868404° **W**.  
Universal Transverse Mercator: 17S: 596054, 4470747

Name of nearest waterbody: Monongahela River

Name of nearest Traditional Navigable Water (TNW) into which the aquatic resource flows: Monongahela River

Name of watershed or Hydrologic Unit Code (HUC): HUC12: 050200050808, Streets Run-Monongahela River

☒ Check if map/diagram of review area and/or potential jurisdictional areas is/are available upon request.

☐ Check if other sites (e.g., offsite mitigation sites, disposal sites, etc...) are associated with this action and are recorded on a different JD form.

**D. REVIEW PERFORMED FOR SITE EVALUATION (CHECK ALL THAT APPLY):**

☒ Office (Desk) Determination. Date: 17 December 2021

☒ Field Determination. Date(s): 28 October 2021

**SECTION II: SUMMARY OF FINDINGS**

**A. RHA SECTION 10 DETERMINATION OF JURISDICTION.**

There **Are no** "navigable waters of the U.S." within Rivers and Harbors Act (RHA) jurisdiction (as defined by 33 CFR part 329) in the review area. [Required]

☐ Waters subject to the ebb and flow of the tide.

☐ Waters are presently used, or have been used in the past, or may be susceptible for use to transport interstate or foreign commerce.

Explain: .

**B. CWA SECTION 404 DETERMINATION OF JURISDICTION.**

There **Are no** "waters of the U.S." within Clean Water Act (CWA) jurisdiction (as defined by 33 CFR part 328) in the review area. [Required]

**1. Waters of the U.S.**

**a. Indicate presence of waters of U.S. in review area (check all that apply):<sup>1</sup>**

- ☐ TNWs, including territorial seas
- ☐ Wetlands adjacent to TNWs
- ☐ Relatively permanent waters<sup>2</sup> (RPWs) that flow directly or indirectly into TNWs
- ☐ Non-RPWs that flow directly or indirectly into TNWs
- ☐ Wetlands directly abutting RPWs that flow directly or indirectly into TNWs
- ☐ Wetlands adjacent to but not directly abutting RPWs that flow directly or indirectly into TNWs
- ☐ Wetlands adjacent to non-RPWs that flow directly or indirectly into TNWs
- ☐ Impoundments of jurisdictional waters
- ☐ Isolated (interstate or intrastate) waters, including isolated wetlands

**b. Identify (estimate) size of waters of the U.S. in the review area:**

Non-wetland waters: linear feet: width (ft) and/or acres.

Wetlands: n/a acres.

**c. Limits (boundaries) of jurisdiction based on: Pick List**

Elevation of established OHWM (if known): .

**2. Non-regulated waters/wetlands (check if applicable):<sup>3</sup>**

- ☒ Potentially jurisdictional waters and/or wetlands were assessed within the review area and determined to be not jurisdictional.  
Explain: **MON-1-S206/207 flows into the Monongahela River but lacks a significant nexus to this downstream TNW.**

<sup>1</sup> Boxes checked below shall be supported by completing the appropriate sections in Section III below.

<sup>2</sup> For purposes of this form, an RPW is defined as a tributary that is not a TNW and that typically flows year-round or has continuous flow at least "seasonally" (e.g., typically 3 months).

<sup>3</sup> Supporting documentation is presented in Section III.F.



### SECTION III: CWA ANALYSIS

#### A. TNWs AND WETLANDS ADJACENT TO TNWs

The agencies will assert jurisdiction over TNWs and wetlands adjacent to TNWs. If the aquatic resource is a TNW, complete Section III.A.1 and Section III.D.1. only; if the aquatic resource is a wetland adjacent to a TNW, complete Sections III.A.1 and 2 and Section III.D.1.; otherwise, see Section III.B below.

1. **TNW**

Identify TNW: .

Summarize rationale supporting determination: .

2. **Wetland adjacent to TNW**

Summarize rationale supporting conclusion that wetland is “adjacent”: .

#### B. CHARACTERISTICS OF TRIBUTARY (THAT IS NOT A TNW) AND ITS ADJACENT WETLANDS (IF ANY):

This section summarizes information regarding characteristics of the tributary and its adjacent wetlands, if any, and it helps determine whether or not the standards for jurisdiction established under *Rapanos* have been met.

The agencies will assert jurisdiction over non-navigable tributaries of TNWs where the tributaries are “relatively permanent waters” (RPWs), i.e. tributaries that typically flow year-round or have continuous flow at least seasonally (e.g., typically 3 months). A wetland that directly abuts an RPW is also jurisdictional. If the aquatic resource is not a TNW, but has year-round (perennial) flow, skip to Section III.D.2. If the aquatic resource is a wetland directly abutting a tributary with perennial flow, skip to Section III.D.4.

A wetland that is adjacent to but that does not directly abut an RPW requires a significant nexus evaluation. Corps districts and EPA regions will include in the record any available information that documents the existence of a significant nexus between a relatively permanent tributary that is not perennial (and its adjacent wetlands if any) and a traditional navigable water, even though a significant nexus finding is not required as a matter of law.

If the waterbody<sup>4</sup> is not an RPW, or a wetland directly abutting an RPW, a JD will require additional data to determine if the waterbody has a significant nexus with a TNW. If the tributary has adjacent wetlands, the significant nexus evaluation must consider the tributary in combination with all of its adjacent wetlands. This significant nexus evaluation that combines, for analytical purposes, the tributary and all of its adjacent wetlands is used whether the review area identified in the JD request is the tributary, or its adjacent wetlands, or both. If the JD covers a tributary with adjacent wetlands, complete Section III.B.1 for the tributary, Section III.B.2 for any onsite wetlands, and Section III.B.3 for all wetlands adjacent to that tributary, both onsite and offsite. The determination whether a significant nexus exists is determined in Section III.C below.

1. **Characteristics of non-TNWs that flow directly or indirectly into TNW**

(i) **General Area Conditions:**

Watershed size: 0.01 **square miles**

Drainage area: 0.01 **square miles**

Average annual rainfall: 45.9 inches

Average annual snowfall: 10.9 inches

(ii) **Physical Characteristics:**

(a) **Relationship with TNW:**

☒ Tributary flows directly into TNW.

☐ Tributary flows through **Pick List** tributaries before entering TNW.

Project waters are **1 (or less)** river miles from TNW.

Project waters are **Pick List** river miles from RPW.

Project waters are **1 (or less)** aerial (straight) miles from TNW.

Project waters are **Pick List** aerial (straight) miles from RPW.

Project waters cross or serve as state boundaries. Explain: .

Identify flow route to TNW<sup>5</sup>: MON-1-S206/207 originate as a hillside seep which generally flows to point where it becomes diffuse overland flow. Overland flow enters a stormwater inlet which then flows through a 24-inch enclosure ,

<sup>4</sup> Note that the Instructional Guidebook contains additional information regarding swales, ditches, washes, and erosional features generally and in the arid West.

<sup>5</sup> Flow route can be described by identifying, e.g., tributary a, which flows through the review area, to flow into tributary b, which then flows into TNW.

meets with the 24-inch enclosure for MON-1-S209 and enters the 48-inch enclosure under Hoffman Blvd. where MON-1-S31/32 also converge. The 48-inch enclosure travels toward Kennywood Park where it collects stormwater flow all along the way until it is discharged into the Monongahela River. In Section B.1.(ii) above, I described this tributary as flowing directly into the TNW; however, flow occurs through several stormwater systems before entering the TNW - this is not necessarily made clear in my description of "directly into TNW" but will be noted here.

Tributary stream order, if known: Tributary stream order is unclear given the nature of its interconnectedness with stormwater systems.

(b) General Tributary Characteristics (check all that apply):

Tributary is: ☐ Natural  
☐ Artificial (man-made). Explain: .

☒ Manipulated (man-altered). Explain: the stream occurs in a highly urbanized area and has likely been manipulated in the past. It is believed that the area where MON-1-S206/207 was previously mined and that these streams could be the result of excavation intercepting groundwater. Further, flow occurs as diffuse overland sheet flow through an abandoned Kmart parking lot before entering a stormwater inlet grate. It flows through stormwater enclosures until it is discharged into a TNW.

**Tributary properties with respect to top of bank (estimate):**

Average width: 2 feet

Average depth: 1 foot

Average side slopes: **3:1**.

**Primary tributary substrate composition (check all that apply):**

<input checked="" type="checkbox"/> Silts	<input checked="" type="checkbox"/> Sands	<input type="checkbox"/> Concrete
<input type="checkbox"/> Cobbles	<input checked="" type="checkbox"/> Gravel	<input checked="" type="checkbox"/> Muck
<input type="checkbox"/> Bedrock	<input type="checkbox"/> Vegetation. Type/% cover: varies	
<input checked="" type="checkbox"/> Other. Explain: Heavy detritus present.		

Tributary condition/stability [e.g., highly eroding, sloughing banks]. Explain: Tributary exists within a previously mined, highly area. Flow cascaded down the hillside before entering the parking area where it becomes diffuse upland flow.

Presence of run/riffle/pool complexes. Explain: n/a.

Tributary geometry: **Meandering**

Tributary gradient (approximate average slope): varies <6 %

(c) Flow:

Tributary provides for: **Intermittent but not seasonal flow**

Estimate average number of flow events in review area/year: **Pick List**

Describe flow regime: Classified as intermittent/ephemeral as consultant. Flowing water was observed on the day of the Corps site visit.

Other information on duration and volume: Flow appears to be groundwater which seeps at the toe of the hillside slope.

Surface flow is: **Overland sheetflow**. Characteristics: Surface flow is a mix of discrete channels and cascades which empty into a paved area and become overland sheetflow before entering a stormwater grate.

Subsurface flow: **No**. Explain findings: .

☐ Dye (or other) test performed: .

**Tributary has (check all that apply):**

☒ Bed and banks

☒ OHWM<sup>6</sup> (check all indicators that apply):

<input type="checkbox"/> clear, natural line impressed on the bank	<input type="checkbox"/> the presence of litter and debris
<input type="checkbox"/> changes in the character of soil	<input checked="" type="checkbox"/> destruction of terrestrial vegetation
<input type="checkbox"/> shelving	<input checked="" type="checkbox"/> the presence of wrack line
<input checked="" type="checkbox"/> vegetation matted down, bent, or absent	<input type="checkbox"/> sediment sorting
<input type="checkbox"/> leaf litter disturbed or washed away	<input type="checkbox"/> scour
<input checked="" type="checkbox"/> sediment deposition	<input checked="" type="checkbox"/> multiple observed or predicted flow events
<input checked="" type="checkbox"/> water staining	<input type="checkbox"/> abrupt change in plant community
<input type="checkbox"/> other (list):	

☒ Discontinuous OHWM.<sup>7</sup> Explain: OHWM is diffuse as it cascades down to the concrete area where the OHWM disappears and flow becomes overland sheetflow.

If factors other than the OHWM were used to determine lateral extent of CWA jurisdiction (check all that apply):

☐ High Tide Line indicated by: ☐ Mean High Water Mark indicated by:

<sup>6</sup>A natural or man-made discontinuity in the OHWM does not necessarily sever jurisdiction (e.g., where the stream temporarily flows underground, or where the OHWM has been removed by development or agricultural practices). Where there is a break in the OHWM that is unrelated to the waterbody's flow regime (e.g., flow over a rock outcrop or through a culvert), the agencies will look for indicators of flow above and below the break.

<sup>7</sup>Ibid.

- |  |  |
|--|--|
| <input type="checkbox"/> oil or scum line along shore objects      | <input type="checkbox"/> survey to available datum;                    |
| <input type="checkbox"/> fine shell or debris deposits (foreshore) | <input type="checkbox"/> physical markings;                            |
| <input type="checkbox"/> physical markings/characteristics         | <input type="checkbox"/> vegetation lines/changes in vegetation types. |
| <input type="checkbox"/> tidal gauges                              |  |
| <input type="checkbox"/> other (list):                             |  |

**(iii) Chemical Characteristics:**

Characterize tributary (e.g., water color is clear, discolored, oily film; water quality; general watershed characteristics, etc.).

Explain: Stream flow chemical characteristics are influenced by groundwater and factors such as water table, groundwater recharge, drought, and precipitation. A portion of these waters also receives a small area of upland flow from ditches, though this contribution is quite minimal. Stream flow chemical characteristics are influenced by groundwater output characteristics. Flow occurs through channels thick with detritus and flow may carry dissolved organic materials. Flow occurs through an old parking area (as well as some contribution from a roadside ditch) which may have the potential to transport chemicals associated with cars.

Identify specific pollutants, if known: some turbidity may be transported associated with silts and dissolved organic materials in addition to the potential for oils or other potential motor vehicle chemicals which may leak on the road or parking area.

**(iv) Biological Characteristics. Channel supports (check all that apply):**

- ☒ Riparian corridor. Characteristics (type, average width): <5 foot varies. A portion of the stream becomes runs over pavement and has no riparian area.
- ☐ Wetland fringe. Characteristics: .
- ☐ Habitat for:
- ☐ Federally Listed species. Explain findings: .
- ☐ Fish/spawn areas. Explain findings: .
- ☐ Other environmentally-sensitive species. Explain findings: .
- ☒ Aquatic/wildlife diversity. Explain findings: applicant found dusky salamander as well as leeches.

**2. Characteristics of wetlands adjacent to non-TNW that flow directly or indirectly into TNW**

**(i) Physical Characteristics:**

**(a) General Wetland Characteristics:**

Properties:

Wetland size: acres

Wetland type. Explain: .

Wetland quality. Explain: .

Project wetlands cross or serve as state boundaries. Explain: .

**(b) General Flow Relationship with Non-TNW:**

Flow is: **Pick List**. Explain: .

Surface flow is: **Pick List**

Characteristics: .

Subsurface flow: **Pick List**. Explain findings: .

☐ Dye (or other) test performed: .

**(c) Wetland Adjacency Determination with Non-TNW:**

☐ Directly abutting

☐ Not directly abutting

☐ Discrete wetland hydrologic connection. Explain: .

☐ Ecological connection. Explain: .

☐ Separated by berm/barrier. Explain: .

**(d) Proximity (Relationship) to TNW**

Project wetlands are **Pick List** river miles from TNW.

Project waters are **Pick List** aerial (straight) miles from TNW.

Flow is from: **Pick List**.

Estimate approximate location of wetland as within the **Pick List** floodplain.

**(ii) Chemical Characteristics:**

Characterize wetland system (e.g., water color is clear, brown, oil film on surface; water quality; general watershed characteristics; etc.). Explain: .

Identify specific pollutants, if known: .

**(iii) Biological Characteristics. Wetland supports (check all that apply):**

☐ Riparian buffer. Characteristics (type, average width): .

☐ Vegetation type/percent cover. Explain: .

☐ Habitat for:

☐ Federally Listed species. Explain findings: .

☐ Fish/spawn areas. Explain findings: .

☐ Other environmentally-sensitive species. Explain findings: .

☐ Aquatic/wildlife diversity. Explain findings: .

**3. Characteristics of all wetlands adjacent to the tributary (if any)**

All wetland(s) being considered in the cumulative analysis: **Pick List**

Approximately ( ) acres in total are being considered in the cumulative analysis.

For each wetland, specify the following:

Directly abuts? (Y/N)

Size (in acres)

Directly abuts? (Y/N)

Size (in acres)

Summarize overall biological, chemical and physical functions being performed: .

### C. SIGNIFICANT NEXUS DETERMINATION

A significant nexus analysis will assess the flow characteristics and functions of the tributary itself and the functions performed by any wetlands adjacent to the tributary to determine if they significantly affect the chemical, physical, and biological integrity of a TNW. For each of the following situations, a significant nexus exists if the tributary, in combination with all of its adjacent wetlands, has more than a speculative or insubstantial effect on the chemical, physical and/or biological integrity of a TNW. Considerations when evaluating significant nexus include, but are not limited to the volume, duration, and frequency of the flow of water in the tributary and its proximity to a TNW, and the functions performed by the tributary and all its adjacent wetlands. It is not appropriate to determine significant nexus based solely on any specific threshold of distance (e.g. between a tributary and its adjacent wetland or between a tributary and the TNW). Similarly, the fact an adjacent wetland lies within or outside of a floodplain is not solely determinative of significant nexus.

Draw connections between the features documented and the effects on the TNW, as identified in the *Rapanos* Guidance and discussed in the Instructional Guidebook. Factors to consider include, for example:

- Does the tributary, in combination with its adjacent wetlands (if any), have the capacity to carry pollutants or flood waters to TNWs, or to reduce the amount of pollutants or flood waters reaching a TNW?
- Does the tributary, in combination with its adjacent wetlands (if any), provide habitat and lifecycle support functions for fish and other species, such as feeding, nesting, spawning, or rearing young for species that are present in the TNW?
- Does the tributary, in combination with its adjacent wetlands (if any), have the capacity to transfer nutrients and organic carbon that support downstream foodwebs?
- Does the tributary, in combination with its adjacent wetlands (if any), have other relationships to the physical, chemical, or biological integrity of the TNW?

**Note: the above list of considerations is not inclusive and other functions observed or known to occur should be documented below:**

1. **Significant nexus findings for non-RPW that has no adjacent wetlands and flows directly or indirectly into TNWs.** Explain findings of presence or absence of significant nexus below, based on the tributary itself, then go to Section III.D:MON-1-S206/207 receives hydrology input primarily from a groundwater seep at the toe of southwestern hillside. Additionally, a small portion of upland roadside ditch is directed into this drainage which may contribute some flow during a precipitation event. Stream flow enters a paved area where it becomes diffuse overland flow and enters a stormwater inlet. Flow continues through a 24-inch enclosure before entering a 48-inch enclosure and flowing off-site towards Kennywood and is eventually emptied into the Monongahela River. The stream feature drains approximately 10 acres of adjacent upland area. The drainage area is very small and consists of 0.0003% of the total area in the HUC12. The waterway conveys water downstream which may be considered relatively permanent flow from an intermittently flowing seep. Water which drains from this area must then flow through stormwater systems the rest of the way downstream before entering the TNW. Physically, the waterway is intermittent and drains a small area. The feature is manmade via the previous mining activity which intercepted the groundwater flow. Biologically, the seep area evidently provides some habitat to dusky salamander and leeches. Though the area itself appears to provide some aquatic habitat, the system of stormwater pipes which connects this seep area to any further downstream waters would not serve as a biological nexus given the piped features could never serve as travel corridor for aquatic species. Chemically, the waterway may provide some dissolved organic matter, pollutants associated with vehicles, and water flow to the downstream waters; however, due to the smallness of the drainage area, would be a small contribution to the downstream TNW. MON-1-S206/207 does appear to contribute some physical and chemical attributes to the downstream TNW, though this contribution is minimal given smallness of the contributing area and the largeness of the TNW. The stormwater system in which downstream flow would occur would make contributing flows from this area indistinguishable from downstream outputs from stormwater flow and its associated physical and chemical attributes. Given the information above, the Corps believes that the downstream nexus, though more than speculative, is insubstantial.
2. **Significant nexus findings for non-RPW and its adjacent wetlands, where the non-RPW flows directly or indirectly into TNWs.** Explain findings of presence or absence of significant nexus below, based on the tributary in combination with all of its adjacent wetlands, then go to Section III.D: .

3. **Significant nexus findings for wetlands adjacent to an RPW but that do not directly abut the RPW.** Explain findings of presence or absence of significant nexus below, based on the tributary in combination with all of its adjacent wetlands, then go to Section III.D: .

**D. DETERMINATIONS OF JURISDICTIONAL FINDINGS. THE SUBJECT WATERS/WETLANDS ARE (CHECK ALL THAT APPLY):**

1. **TNWs and Adjacent Wetlands.** Check all that apply and provide size estimates in review area:

- ☐ TNWs: linear feet width (ft), Or, acres.  
☐ Wetlands adjacent to TNWs: acres.

2. **RPWs that flow directly or indirectly into TNWs.**

- ☐ Tributaries of TNWs where tributaries typically flow year-round are jurisdictional. Provide data and rationale indicating that tributary is perennial: .  
☐ Tributaries of TNW where tributaries have continuous flow “seasonally” (e.g., typically three months each year) are jurisdictional. Data supporting this conclusion is provided at Section III.B. Provide rationale indicating that tributary flows seasonally: .

Provide estimates for jurisdictional waters in the review area (check all that apply):

- ☐ Tributary waters: linear feet width (ft).  
☐ Other non-wetland waters: acres.  
Identify type(s) of waters: .

3. **Non-RPWs<sup>8</sup> that flow directly or indirectly into TNWs.**

- ☐ Waterbody that is not a TNW or an RPW, but flows directly or indirectly into a TNW, and it has a significant nexus with a TNW is jurisdictional. Data supporting this conclusion is provided at Section III.C.

Provide estimates for jurisdictional waters within the review area (check all that apply):

- ☐ Tributary waters: linear feet width (ft).  
☐ Other non-wetland waters: acres.  
Identify type(s) of waters: .

4. **Wetlands directly abutting an RPW that flow directly or indirectly into TNWs.**

- ☐ Wetlands directly abut RPW and thus are jurisdictional as adjacent wetlands.  
☐ Wetlands directly abutting an RPW where tributaries typically flow year-round. Provide data and rationale indicating that tributary is perennial in Section III.D.2, above. Provide rationale indicating that wetland is directly abutting an RPW: .  
☐ Wetlands directly abutting an RPW where tributaries typically flow “seasonally.” Provide data indicating that tributary is seasonal in Section III.B and rationale in Section III.D.2, above. Provide rationale indicating that wetland is directly abutting an RPW: .

Provide acreage estimates for jurisdictional wetlands in the review area: acres.

5. **Wetlands adjacent to but not directly abutting an RPW that flow directly or indirectly into TNWs.**

- ☐ Wetlands that do not directly abut an RPW, but when considered in combination with the tributary to which they are adjacent and with similarly situated adjacent wetlands, have a significant nexus with a TNW are jurisdictional. Data supporting this conclusion is provided at Section III.C.

Provide acreage estimates for jurisdictional wetlands in the review area: acres.

6. **Wetlands adjacent to non-RPWs that flow directly or indirectly into TNWs.**

- ☐ Wetlands adjacent to such waters, and have when considered in combination with the tributary to which they are adjacent and with similarly situated adjacent wetlands, have a significant nexus with a TNW are jurisdictional. Data supporting this conclusion is provided at Section III.C.

Provide estimates for jurisdictional wetlands in the review area: acres.

---

<sup>8</sup>See Footnote # 3.

7. **Impoundments of jurisdictional waters.**<sup>9</sup>

As a general rule, the impoundment of a jurisdictional tributary remains jurisdictional.

- ☐ Demonstrate that impoundment was created from “waters of the U.S.,” or
- ☐ Demonstrate that water meets the criteria for one of the categories presented above (1-6), or
- ☐ Demonstrate that water is isolated with a nexus to commerce (see E below).

E. **ISOLATED [INTERSTATE OR INTRA-STATE] WATERS, INCLUDING ISOLATED WETLANDS, THE USE, DEGRADATION OR DESTRUCTION OF WHICH COULD AFFECT INTERSTATE COMMERCE, INCLUDING ANY SUCH WATERS (CHECK ALL THAT APPLY):**<sup>10</sup>

- ☐ which are or could be used by interstate or foreign travelers for recreational or other purposes.
- ☐ from which fish or shellfish are or could be taken and sold in interstate or foreign commerce.
- ☐ which are or could be used for industrial purposes by industries in interstate commerce.
- ☐ Interstate isolated waters. Explain: .
- ☐ Other factors. Explain: .

**Identify water body and summarize rationale supporting determination:** .

Provide estimates for jurisdictional waters in the review area (check all that apply):

- ☐ Tributary waters: linear feet width (ft).
- ☐ Other non-wetland waters: acres.  
Identify type(s) of waters: .
- ☐ Wetlands: acres.

F. **NON-JURISDICTIONAL WATERS, INCLUDING WETLANDS (CHECK ALL THAT APPLY):**

- ☐ If potential wetlands were assessed within the review area, these areas did not meet the criteria in the 1987 Corps of Engineers Wetland Delineation Manual and/or appropriate Regional Supplements.
- ☐ Review area included isolated waters with no substantial nexus to interstate (or foreign) commerce.
  - ☐ Prior to the Jan 2001 Supreme Court decision in “*SWANCC*,” the review area would have been regulated based solely on the “Migratory Bird Rule” (MBR).
- ☒ Waters do not meet the “Significant Nexus” standard, where such a finding is required for jurisdiction. Explain: **Waters which flow from MON-1-S206/207 have no biological nexus to downstream TNWs; however, a chemical and physical nexus may exist. It has been determined that this physical and chemical nexus is insubstantial given reasons stated in Section C.1. above. Given the stream is absent any significant nexus to downstream TNWs, it has been determined that MON-1-S206/207 is not a jurisdictional water.**
- ☐ Other: (explain, if not covered above): .

Provide acreage estimates for non-jurisdictional waters in the review area, where the sole potential basis of jurisdiction is the MBR factors (i.e., presence of migratory birds, presence of endangered species, use of water for irrigated agriculture), using best professional judgment (check all that apply):

- ☐ Non-wetland waters (i.e., rivers, streams): linear feet width (ft).
- ☐ Lakes/ponds: acres.
- ☐ Other non-wetland waters: acres. List type of aquatic resource: .
- ☐ Wetlands: acres.

Provide acreage estimates for non-jurisdictional waters in the review area that do not meet the “Significant Nexus” standard, where such a finding is required for jurisdiction (check all that apply):

- ☒ Non-wetland waters (i.e., rivers, streams): **317** linear feet, **2** width (ft).
- ☐ Lakes/ponds: acres.
- ☐ Other non-wetland waters: acres. List type of aquatic resource: .
- ☐ Wetlands: acres.

**SECTION IV: DATA SOURCES.**

A. **SUPPORTING DATA. Data reviewed for JD (check all that apply - checked items shall be included in case file and, where checked and requested, appropriately reference sources below):**

<sup>9</sup> To complete the analysis refer to the key in Section III.D.6 of the Instructional Guidebook.

<sup>10</sup> Prior to asserting or declining CWA jurisdiction based solely on this category, Corps Districts will elevate the action to Corps and EPA HQ for review consistent with the process described in the Corps/EPA Memorandum Regarding CWA Act Jurisdiction Following Rapanos.

- ☒ Maps, plans, plots or plat submitted by or on behalf of the applicant/consultant: 53C2 project plans; Delineation Report (with addendums).
- ☐ Data sheets prepared/submitted by or on behalf of the applicant/consultant.  
☐ Office concurs with data sheets/delineation report.  
☐ Office does not concur with data sheets/delineation report.
- ☐ Data sheets prepared by the Corps: .
- ☐ Corps navigable waters' study: .
- ☒ U.S. Geological Survey Hydrologic Atlas: .  
☒ USGS NHD data.  
☒ USGS 8 and 12 digit HUC maps.
- ☒ U.S. Geological Survey map(s). Cite scale & quad name: Braddock 2019.
- ☐ USDA Natural Resources Conservation Service Soil Survey. Citation: .
- ☒ National wetlands inventory map(s). Cite name: USFWS "Wetlands Mapper".
- ☐ State/Local wetland inventory map(s): .
- ☐ FEMA/FIRM maps: .
- ☐ 100-year Floodplain Elevation is: (National Geodetic Vertical Datum of 1929)
- ☒ Photographs: ☒ Aerial (Name & Date): Google Earth: Oct. 2020.  
or ☒ Other (Name & Date): Site photos provided with Delineation Reports; Corps on-site photographs Oct. 2021.
- ☐ Previous determination(s). File no. and date of response letter: .
- ☐ Applicable/supporting case law: .
- ☐ Applicable/supporting scientific literature: .
- ☐ Other information (please specify): .

**B. ADDITIONAL COMMENTS TO SUPPORT JD:** Flowing water was observed during the 28 Oct. 2021 site visit. Antecedent Precipitation Tool (APT) was utilized to determine whether conditions were within the normal range of climatic conditions on the day of the site visit. According to the APT, rainfall for the previous 30-day period was within the 30-year normal range of precipitation. This visit occurred during the wet season with conditions for the previous 90 days rated as "wetter than normal". This visit did not occur during a drought or on the heels of a large rain event which could have adversely affected observations on the day of the site visit.



**APPROVED JURISDICTIONAL DETERMINATION FORM**  
**U.S. Army Corps of Engineers**

This form should be completed by following the instructions provided in Section IV of the JD Form Instructional Guidebook.

**SECTION I: BACKGROUND INFORMATION**

**A. REPORT COMPLETION DATE FOR APPROVED JURISDICTIONAL DETERMINATION (JD): 30 November 2021**

**B. DISTRICT OFFICE, FILE NAME, AND NUMBER: CELRP-RG-S 2020-00329**

**C. PROJECT LOCATION AND BACKGROUND INFORMATION:**

State: PA County/parish/borough: Allegheny City: West Mifflin  
Center coordinates of site (lat/long in degree decimal format): Lat. 40.381719° **N**, Long. -79.871094° **W**.  
Universal Transverse Mercator: 17S: 595825, 4470737

Name of nearest waterbody: Monongahela River

Name of nearest Traditional Navigable Water (TNW) into which the aquatic resource flows: Monongahela River

Name of watershed or Hydrologic Unit Code (HUC): HUC12: 050200050808, Streets Run-Monongahela River

☒ Check if map/diagram of review area and/or potential jurisdictional areas is/are available upon request.

☐ Check if other sites (e.g., offsite mitigation sites, disposal sites, etc...) are associated with this action and are recorded on a different JD form.

**D. REVIEW PERFORMED FOR SITE EVALUATION (CHECK ALL THAT APPLY):**

☒ Office (Desk) Determination. Date: 30 November 2021

☒ Field Determination. Date(s): 28 October 2021

**SECTION II: SUMMARY OF FINDINGS**

**A. RHA SECTION 10 DETERMINATION OF JURISDICTION.**

There **Are no** "navigable waters of the U.S." within Rivers and Harbors Act (RHA) jurisdiction (as defined by 33 CFR part 329) in the review area. [Required]

☐ Waters subject to the ebb and flow of the tide.

☐ Waters are presently used, or have been used in the past, or may be susceptible for use to transport interstate or foreign commerce.

Explain: .

**B. CWA SECTION 404 DETERMINATION OF JURISDICTION.**

There **Are no** "waters of the U.S." within Clean Water Act (CWA) jurisdiction (as defined by 33 CFR part 328) in the review area. [Required]

**1. Waters of the U.S.**

**a. Indicate presence of waters of U.S. in review area (check all that apply):<sup>1</sup>**

- ☐ TNWs, including territorial seas
- ☐ Wetlands adjacent to TNWs
- ☐ Relatively permanent waters<sup>2</sup> (RPWs) that flow directly or indirectly into TNWs
- ☐ Non-RPWs that flow directly or indirectly into TNWs
- ☐ Wetlands directly abutting RPWs that flow directly or indirectly into TNWs
- ☐ Wetlands adjacent to but not directly abutting RPWs that flow directly or indirectly into TNWs
- ☐ Wetlands adjacent to non-RPWs that flow directly or indirectly into TNWs
- ☐ Impoundments of jurisdictional waters
- ☐ Isolated (interstate or intrastate) waters, including isolated wetlands

**b. Identify (estimate) size of waters of the U.S. in the review area:**

Non-wetland waters: linear feet: width (ft) and/or acres.

Wetlands: n/a acres.

**c. Limits (boundaries) of jurisdiction based on: Pick List**

Elevation of established OHWM (if known): .

**2. Non-regulated waters/wetlands (check if applicable):<sup>3</sup>**

☒ Potentially jurisdictional waters and/or wetlands were assessed within the review area and determined to be not jurisdictional.

Explain: **MON-1-S209 flows into the Monongahela River but lacks a significant nexus to this downstream TNW.**

<sup>1</sup> Boxes checked below shall be supported by completing the appropriate sections in Section III below.

<sup>2</sup> For purposes of this form, an RPW is defined as a tributary that is not a TNW and that typically flows year-round or has continuous flow at least "seasonally" (e.g., typically 3 months).

<sup>3</sup> Supporting documentation is presented in Section III.F.

### SECTION III: CWA ANALYSIS

#### A. TNWs AND WETLANDS ADJACENT TO TNWs

The agencies will assert jurisdiction over TNWs and wetlands adjacent to TNWs. If the aquatic resource is a TNW, complete Section III.A.1 and Section III.D.1. only; if the aquatic resource is a wetland adjacent to a TNW, complete Sections III.A.1 and 2 and Section III.D.1.; otherwise, see Section III.B below.

1. **TNW**

Identify TNW: .

Summarize rationale supporting determination: .

2. **Wetland adjacent to TNW**

Summarize rationale supporting conclusion that wetland is “adjacent”: .

#### B. CHARACTERISTICS OF TRIBUTARY (THAT IS NOT A TNW) AND ITS ADJACENT WETLANDS (IF ANY):

This section summarizes information regarding characteristics of the tributary and its adjacent wetlands, if any, and it helps determine whether or not the standards for jurisdiction established under *Rapanos* have been met.

The agencies will assert jurisdiction over non-navigable tributaries of TNWs where the tributaries are “relatively permanent waters” (RPWs), i.e. tributaries that typically flow year-round or have continuous flow at least seasonally (e.g., typically 3 months). A wetland that directly abuts an RPW is also jurisdictional. If the aquatic resource is not a TNW, but has year-round (perennial) flow, skip to Section III.D.2. If the aquatic resource is a wetland directly abutting a tributary with perennial flow, skip to Section III.D.4.

A wetland that is adjacent to but that does not directly abut an RPW requires a significant nexus evaluation. Corps districts and EPA regions will include in the record any available information that documents the existence of a significant nexus between a relatively permanent tributary that is not perennial (and its adjacent wetlands if any) and a traditional navigable water, even though a significant nexus finding is not required as a matter of law.

If the waterbody<sup>4</sup> is not an RPW, or a wetland directly abutting an RPW, a JD will require additional data to determine if the waterbody has a significant nexus with a TNW. If the tributary has adjacent wetlands, the significant nexus evaluation must consider the tributary in combination with all of its adjacent wetlands. This significant nexus evaluation that combines, for analytical purposes, the tributary and all of its adjacent wetlands is used whether the review area identified in the JD request is the tributary, or its adjacent wetlands, or both. If the JD covers a tributary with adjacent wetlands, complete Section III.B.1 for the tributary, Section III.B.2 for any onsite wetlands, and Section III.B.3 for all wetlands adjacent to that tributary, both onsite and offsite. The determination whether a significant nexus exists is determined in Section III.C below.

1. **Characteristics of non-TNWs that flow directly or indirectly into TNW**

(i) **General Area Conditions:**

Watershed size: 0.01 **square miles**

Drainage area: 0.01 **square miles**

Average annual rainfall: 45.9 inches

Average annual snowfall: 10.9 inches

(ii) **Physical Characteristics:**

(a) **Relationship with TNW:**

☒ Tributary flows directly into TNW.

☐ Tributary flows through **Pick List** tributaries before entering TNW.

Project waters are **Pick List** river miles from TNW.

Project waters are **Pick List** river miles from RPW.

Project waters are **1 (or less)** aerial (straight) miles from TNW.

Project waters are **Pick List** aerial (straight) miles from RPW.

Project waters cross or serve as state boundaries. Explain: .

Identify flow route to TNW<sup>5</sup>: MON-1-S30at its intersection with Hoffman Blvd. becomes enclosed and connected to the local stormwater infrastructure. This 24-inch enclosure travels across the road and joins the 48-inch enclosure which

<sup>4</sup> Note that the Instructional Guidebook contains additional information regarding swales, ditches, washes, and erosional features generally and in the arid West.

<sup>5</sup> Flow route can be described by identifying, e.g., tributary a, which flows through the review area, to flow into tributary b, which then flows into TNW.

flows towards Kennywood Park where it collects stormwater flow all along the way until it is discharged into the Monongahela River. In Section B.1.(ii) above, I described this tributary as flowing directly into the TNW; however, flow occurs through several stormwater systems before entering the TNW - this is not necessarily made clear in my description of "directly into TNW" but will be noted here.

Tributary stream order, if known: Tributary stream order is unclear given the nature of its interconnectedness with stormwater systems.

(b) General Tributary Characteristics (check all that apply):

Tributary is: ☐ Natural  
☐ Artificial (man-made). Explain: .  
☒ Manipulated (man-altered). Explain: the stream occurs in a highly urbanized area and has likely been manipulated in the past. Though this stream may be the remnant of an old stream system, today it functions more as a roadside ditch.

**Tributary** properties with respect to top of bank (estimate):

Average width: 3 feet  
Average depth: 1 feet  
Average side slopes: **3:1**.

Primary tributary substrate composition (check all that apply):

<input checked="" type="checkbox"/> Silts	<input type="checkbox"/> Sands	<input type="checkbox"/> Concrete
<input type="checkbox"/> Cobbles	<input checked="" type="checkbox"/> Gravel	<input type="checkbox"/> Muck
<input type="checkbox"/> Bedrock	<input type="checkbox"/> Vegetation. Type/% cover: varies	
<input checked="" type="checkbox"/> Other. Explain: some disposed angular rock.		

Tributary condition/stability [e.g., highly eroding, sloughing banks]. Explain: Stream is located adjacent to a large commercial and parking area as well as parallel to Hoffman Blvd. Some erosion is noted on some of the upper slopes but not within the stream.

Presence of run/riffle/pool complexes. Explain: n/a.

Tributary geometry: **Relatively straight**

Tributary gradient (approximate average slope): 6 %

(c) Flow:

Tributary provides for: **Ephemeral flow**

Estimate average number of flow events in review area/year: **Pick List**

Describe flow regime: Flow occurs in direct response to precipitation.

Other information on duration and volume: Flow input appears to be primarily overland flow from adjacent impervious surfaces.

Surface flow is: **Discrete**. Characteristics: Flow is within a non-confined stream channel which becomes less defined as you travel further up its reach. The top half of this roadside stretch was not delineated as it loses bed & bank at a certain point.

Subsurface flow: **No**. Explain findings: .

☐ Dye (or other) test performed: .

Tributary has (check all that apply):

<input checked="" type="checkbox"/> Bed and banks	
<input checked="" type="checkbox"/> OHWM <sup>6</sup> (check all indicators that apply):	
<input type="checkbox"/> clear, natural line impressed on the bank	<input type="checkbox"/> the presence of litter and debris
<input type="checkbox"/> changes in the character of soil	<input type="checkbox"/> destruction of terrestrial vegetation
<input type="checkbox"/> shelving	<input type="checkbox"/> the presence of wrack line
<input checked="" type="checkbox"/> vegetation matted down, bent, or absent	<input checked="" type="checkbox"/> sediment sorting
<input checked="" type="checkbox"/> leaf litter disturbed or washed away	<input checked="" type="checkbox"/> scour
<input type="checkbox"/> sediment deposition	<input type="checkbox"/> multiple observed or predicted flow events
<input type="checkbox"/> water staining	<input type="checkbox"/> abrupt change in plant community
<input type="checkbox"/> other (list):	
<input type="checkbox"/> Discontinuous OHWM. <sup>7</sup> Explain: .	

If factors other than the OHWM were used to determine lateral extent of CWA jurisdiction (check all that apply):

<input type="checkbox"/> High Tide Line indicated by:	<input type="checkbox"/> Mean High Water Mark indicated by:
<input type="checkbox"/> oil or scum line along shore objects	<input type="checkbox"/> survey to available datum;

<sup>6</sup>A natural or man-made discontinuity in the OHWM does not necessarily sever jurisdiction (e.g., where the stream temporarily flows underground, or where the OHWM has been removed by development or agricultural practices). Where there is a break in the OHWM that is unrelated to the waterbody's flow regime (e.g., flow over a rock outcrop or through a culvert), the agencies will look for indicators of flow above and below the break.

<sup>7</sup>Ibid.

- |  |  |
|--|--|
| <input type="checkbox"/> fine shell or debris deposits (foreshore) | <input type="checkbox"/> physical markings;                            |
| <input type="checkbox"/> physical markings/characteristics         | <input type="checkbox"/> vegetation lines/changes in vegetation types. |
| <input type="checkbox"/> tidal gauges                              |  |
| <input type="checkbox"/> other (list):                             |  |

**(iii) Chemical Characteristics:**

Characterize tributary (e.g., water color is clear, discolored, oily film; water quality; general watershed characteristics, etc.).

Explain: Stream flow chemical characteristics are strongly influenced by rainfall chemical characteristics. Stream receives overland flow from adjacent upland, including Hoffman Blvd, and is likely carrying oil, gas, and other potential chemical inputs associated with leaking vehicle fluids.

Identify specific pollutants, if known: some turbidity is likely given the noted upland erosion; however, this is likely minimal.

**(iv) Biological Characteristics. Channel supports (check all that apply):**

- ☒ Riparian corridor. Characteristics (type, average width): <5 foot - the stream runs between a road and a parking lot and the not-mowed riparian fringe is very slim.
- ☐ Wetland fringe. Characteristics: .
- ☐ Habitat for:
- ☐ Federally Listed species. Explain findings: .
  - ☐ Fish/spawn areas. Explain findings: .
  - ☐ Other environmentally-sensitive species. Explain findings: .
  - ☐ Aquatic/wildlife diversity. Explain findings: .

**2. Characteristics of wetlands adjacent to non-TNW that flow directly or indirectly into TNW**

**(i) Physical Characteristics:**

**(a) General Wetland Characteristics:**

Properties:

Wetland size: acres

Wetland type. Explain: .

Wetland quality. Explain: .

Project wetlands cross or serve as state boundaries. Explain: .

**(b) General Flow Relationship with Non-TNW:**

Flow is: **Pick List**. Explain: .

Surface flow is: **Pick List**

Characteristics: .

Subsurface flow: **Pick List**. Explain findings: .

☐ Dye (or other) test performed: .

**(c) Wetland Adjacency Determination with Non-TNW:**

☐ Directly abutting

☐ Not directly abutting

☐ Discrete wetland hydrologic connection. Explain: .

☐ Ecological connection. Explain: .

☐ Separated by berm/barrier. Explain: .

**(d) Proximity (Relationship) to TNW**

Project wetlands are **Pick List** river miles from TNW.

Project waters are **Pick List** aerial (straight) miles from TNW.

Flow is from: **Pick List**.

Estimate approximate location of wetland as within the **Pick List** floodplain.

**(ii) Chemical Characteristics:**

Characterize wetland system (e.g., water color is clear, brown, oil film on surface; water quality; general watershed characteristics; etc.). Explain: .

Identify specific pollutants, if known: .

**(iii) Biological Characteristics. Wetland supports (check all that apply):**

☐ Riparian buffer. Characteristics (type, average width): .

☐ Vegetation type/percent cover. Explain: .

☐ Habitat for:

☐ Federally Listed species. Explain findings: .

☐ Fish/spawn areas. Explain findings: .

☐ Other environmentally-sensitive species. Explain findings: .

☐ Aquatic/wildlife diversity. Explain findings: .

**3. Characteristics of all wetlands adjacent to the tributary (if any)**

All wetland(s) being considered in the cumulative analysis: **Pick List**

Approximately ( ) acres in total are being considered in the cumulative analysis.

For each wetland, specify the following:

Directly abuts? (Y/N)

Size (in acres)

Directly abuts? (Y/N)

Size (in acres)

Summarize overall biological, chemical and physical functions being performed: .

### C. SIGNIFICANT NEXUS DETERMINATION

A significant nexus analysis will assess the flow characteristics and functions of the tributary itself and the functions performed by any wetlands adjacent to the tributary to determine if they significantly affect the chemical, physical, and biological integrity of a TNW. For each of the following situations, a significant nexus exists if the tributary, in combination with all of its adjacent wetlands, has more than a speculative or insubstantial effect on the chemical, physical and/or biological integrity of a TNW. Considerations when evaluating significant nexus include, but are not limited to the volume, duration, and frequency of the flow of water in the tributary and its proximity to a TNW, and the functions performed by the tributary and all its adjacent wetlands. It is not appropriate to determine significant nexus based solely on any specific threshold of distance (e.g. between a tributary and its adjacent wetland or between a tributary and the TNW). Similarly, the fact an adjacent wetland lies within or outside of a floodplain is not solely determinative of significant nexus.

Draw connections between the features documented and the effects on the TNW, as identified in the *Rapanos* Guidance and discussed in the Instructional Guidebook. Factors to consider include, for example:

- Does the tributary, in combination with its adjacent wetlands (if any), have the capacity to carry pollutants or flood waters to TNWs, or to reduce the amount of pollutants or flood waters reaching a TNW?
- Does the tributary, in combination with its adjacent wetlands (if any), provide habitat and lifecycle support functions for fish and other species, such as feeding, nesting, spawning, or rearing young for species that are present in the TNW?
- Does the tributary, in combination with its adjacent wetlands (if any), have the capacity to transfer nutrients and organic carbon that support downstream foodwebs?
- Does the tributary, in combination with its adjacent wetlands (if any), have other relationships to the physical, chemical, or biological integrity of the TNW?

**Note: the above list of considerations is not inclusive and other functions observed or known to occur should be documented below:**

1. **Significant nexus findings for non-RPW that has no adjacent wetlands and flows directly or indirectly into TNWs.** Explain findings of presence or absence of significant nexus below, based on the tributary itself, then go to Section III.D: MON-1-S209 is an ephemeral stream which is located between Hoffman Blvd. and an adjacent commercial parking area. Flow input appears to be primarily overland runoff from Hoffman Blvd and the adjacent parking lot's fill slope. The waterway enters a 24-inch enclosure at its intersection with Hoffman Blvd. which flows under the road and directly into the larger 48-inch enclosure, mixing with local stormwater inputs and traveling towards Kennywood Park and its associated parking areas and under a wide railroad ROW before entering the TNW. There do not appear to be any piped outlets contributing flow into MON-1-209. This stream feature drains approximately 0.01 square miles of adjacent upland area. The drainage area is very small and consists of 0.0006% of the total area of the HUC12. The drainage area is at the top of its watershed and does not contain additional upstream flow. Water which drains from this area must then flow through stormwater systems the rest of the way downstream before entering the TNW. Physically, the waterway is ephemeral and drains a small area. It appears to function primarily as a roadside ditch, and it is unclear whether the stream was entirely man-made or if it is an altered natural feature. Biologically, the waterway does not appear to serve much of a service to biota with possibly the exception of seasonal mosquitos. The ephemeral flow of the waterway would not provide habitat for aquatic biota nor a wide range of macroinvertebrates. Chemically, the stream transports water during precipitation events. Given the stormwater inputs from overland flow including the road, it is likely that this waterway has the potential to transport some chemical pollutants associated with parked cars (oil, gas, etc.). The chemical contribution to the downstream TNW, however, is insignificant given the smallness of the drainage area, the indistinguishable nature of the chemical inputs directly into MON-1-S209 from its downstream stormwater inputs (i.e. Kennywood area drainage), and the largeness of the downstream TNW's flow compared to MON-1-S209's flow.
2. **Significant nexus findings for non-RPW and its adjacent wetlands, where the non-RPW flows directly or indirectly into TNWs.** Explain findings of presence or absence of significant nexus below, based on the tributary in combination with all of its adjacent wetlands, then go to Section III.D: .
3. **Significant nexus findings for wetlands adjacent to an RPW but that do not directly abut the RPW.** Explain findings of presence or absence of significant nexus below, based on the tributary in combination with all of its adjacent wetlands, then go to Section III.D: .

**D. DETERMINATIONS OF JURISDICTIONAL FINDINGS. THE SUBJECT WATERS/WETLANDS ARE (CHECK ALL THAT APPLY):**

**1. TNWs and Adjacent Wetlands.** Check all that apply and provide size estimates in review area:

- ☐ TNWs: linear feet width (ft), Or, acres.  
☐ Wetlands adjacent to TNWs: acres.

**2. RPWs that flow directly or indirectly into TNWs.**

- ☐ Tributaries of TNWs where tributaries typically flow year-round are jurisdictional. Provide data and rationale indicating that tributary is perennial: .  
☐ Tributaries of TNW where tributaries have continuous flow “seasonally” (e.g., typically three months each year) are jurisdictional. Data supporting this conclusion is provided at Section III.B. Provide rationale indicating that tributary flows seasonally: .

Provide estimates for jurisdictional waters in the review area (check all that apply):

- ☐ Tributary waters: linear feet width (ft).  
☐ Other non-wetland waters: acres.  
Identify type(s) of waters: .

**3. Non-RPWs<sup>8</sup> that flow directly or indirectly into TNWs.**

- ☐ Waterbody that is not a TNW or an RPW, but flows directly or indirectly into a TNW, and it has a significant nexus with a TNW is jurisdictional. Data supporting this conclusion is provided at Section III.C.

Provide estimates for jurisdictional waters within the review area (check all that apply):

- ☐ Tributary waters: linear feet width (ft).  
☐ Other non-wetland waters: acres.  
Identify type(s) of waters: .

**4. Wetlands directly abutting an RPW that flow directly or indirectly into TNWs.**

- ☐ Wetlands directly abut RPW and thus are jurisdictional as adjacent wetlands.  
☐ Wetlands directly abutting an RPW where tributaries typically flow year-round. Provide data and rationale indicating that tributary is perennial in Section III.D.2, above. Provide rationale indicating that wetland is directly abutting an RPW: .  
☐ Wetlands directly abutting an RPW where tributaries typically flow “seasonally.” Provide data indicating that tributary is seasonal in Section III.B and rationale in Section III.D.2, above. Provide rationale indicating that wetland is directly abutting an RPW: .

Provide acreage estimates for jurisdictional wetlands in the review area: acres.

**5. Wetlands adjacent to but not directly abutting an RPW that flow directly or indirectly into TNWs.**

- ☐ Wetlands that do not directly abut an RPW, but when considered in combination with the tributary to which they are adjacent and with similarly situated adjacent wetlands, have a significant nexus with a TNW are jurisdictional. Data supporting this conclusion is provided at Section III.C.

Provide acreage estimates for jurisdictional wetlands in the review area: acres.

**6. Wetlands adjacent to non-RPWs that flow directly or indirectly into TNWs.**

- ☐ Wetlands adjacent to such waters, and have when considered in combination with the tributary to which they are adjacent and with similarly situated adjacent wetlands, have a significant nexus with a TNW are jurisdictional. Data supporting this conclusion is provided at Section III.C.

Provide estimates for jurisdictional wetlands in the review area: acres.

**7. Impoundments of jurisdictional waters.<sup>9</sup>**

As a general rule, the impoundment of a jurisdictional tributary remains jurisdictional.

- ☐ Demonstrate that impoundment was created from “waters of the U.S.,” or

<sup>8</sup>See Footnote # 3.

<sup>9</sup> To complete the analysis refer to the key in Section III.D.6 of the Instructional Guidebook.

- ☐ Demonstrate that water meets the criteria for one of the categories presented above (1-6), or  
☐ Demonstrate that water is isolated with a nexus to commerce (see E below).

**E. ISOLATED [INTERSTATE OR INTRA-STATE] WATERS, INCLUDING ISOLATED WETLANDS, THE USE, DEGRADATION OR DESTRUCTION OF WHICH COULD AFFECT INTERSTATE COMMERCE, INCLUDING ANY SUCH WATERS (CHECK ALL THAT APPLY):<sup>10</sup>**

- ☐ which are or could be used by interstate or foreign travelers for recreational or other purposes.  
☐ from which fish or shellfish are or could be taken and sold in interstate or foreign commerce.  
☐ which are or could be used for industrial purposes by industries in interstate commerce.  
☐ Interstate isolated waters. Explain: .  
☐ Other factors. Explain: .

**Identify water body and summarize rationale supporting determination:** .

Provide estimates for jurisdictional waters in the review area (check all that apply):

- ☐ Tributary waters: linear feet width (ft).  
☐ Other non-wetland waters: acres.  
 Identify type(s) of waters: .  
☐ Wetlands: acres.

**F. NON-JURISDICTIONAL WATERS, INCLUDING WETLANDS (CHECK ALL THAT APPLY):**

- ☐ If potential wetlands were assessed within the review area, these areas did not meet the criteria in the 1987 Corps of Engineers Wetland Delineation Manual and/or appropriate Regional Supplements.  
☐ Review area included isolated waters with no substantial nexus to interstate (or foreign) commerce.  
☐ Prior to the Jan 2001 Supreme Court decision in “*SWANCC*,” the review area would have been regulated based solely on the “Migratory Bird Rule” (MBR).  
☒ Waters do not meet the “Significant Nexus” standard, where such a finding is required for jurisdiction. Explain: **Waters which flow from MON-1-S209 have no physical or biological nexus to downstream TNWs; however, a chemical nexus has some potential to occur. It has been determined that this chemical nexus is discountable given reasons stated in Section C.1. above. Given the stream is absent any significant nexus to downstream TNWs, it has been determined that MON-1-S209 is not a jurisdictional water.**  
☐ Other: (explain, if not covered above): .

Provide acreage estimates for non-jurisdictional waters in the review area, where the sole potential basis of jurisdiction is the MBR factors (i.e., presence of migratory birds, presence of endangered species, use of water for irrigated agriculture), using best professional judgment (check all that apply):

- ☐ Non-wetland waters (i.e., rivers, streams): linear feet width (ft).  
☐ Lakes/ponds: acres.  
☐ Other non-wetland waters: acres. List type of aquatic resource: .  
☐ Wetlands: acres.

Provide acreage estimates for non-jurisdictional waters in the review area that do not meet the “Significant Nexus” standard, where such a finding is required for jurisdiction (check all that apply):

- ☒ Non-wetland waters (i.e., rivers, streams): **423** linear feet, **<3** width (ft).  
☐ Lakes/ponds: acres.  
☐ Other non-wetland waters: acres. List type of aquatic resource: .  
☐ Wetlands: acres.

**SECTION IV: DATA SOURCES.**

**A. SUPPORTING DATA. Data reviewed for JD (check all that apply - checked items shall be included in case file and, where checked and requested, appropriately reference sources below):**

- ☒ Maps, plans, plots or plat submitted by or on behalf of the applicant/consultant: 53C2 project plans; Delineation Report (with addendums).  
☐ Data sheets prepared/submitted by or on behalf of the applicant/consultant.  
☐ Office concurs with data sheets/delineation report.  
☐ Office does not concur with data sheets/delineation report.

<sup>10</sup> Prior to asserting or declining CWA jurisdiction based solely on this category, Corps Districts will elevate the action to Corps and EPA HQ for review consistent with the process described in the Corps/EPA Memorandum Regarding CWA Act Jurisdiction Following Rapanos.



- ☐ Data sheets prepared by the Corps: .
- ☐ Corps navigable waters' study: .
- ☒ U.S. Geological Survey Hydrologic Atlas: .
  - ☒ USGS NHD data.
  - ☒ USGS 8 and 12 digit HUC maps.
- ☒ U.S. Geological Survey map(s). Cite scale & quad name: Braddock 2019.
- ☐ USDA Natural Resources Conservation Service Soil Survey. Citation: .
- ☒ National wetlands inventory map(s). Cite name: USFWS "Wetlands Mapper".
- ☐ State/Local wetland inventory map(s): .
- ☐ FEMA/FIRM maps: .
- ☐ 100-year Floodplain Elevation is: (National Geodetic Vertical Datum of 1929)
- ☒ Photographs: ☒ Aerial (Name & Date): Google Earth: Oct. 2020.  
or ☒ Other (Name & Date): Site photos provided with Delineation Reports; Corps on-site photographs Oct. 2021.
- ☐ Previous determination(s). File no. and date of response letter: .
- ☐ Applicable/supporting case law: .
- ☐ Applicable/supporting scientific literature: .
- ☐ Other information (please specify): .

**B. ADDITIONAL COMMENTS TO SUPPORT JD:** No flowing water was observed during the 28 Oct. 2021 site visit. Antecedent Precipitation Tool (APT) was utilized to determine whether conditions were within the normal range of climatic conditions on the day of the site visit. According to the APT, rainfall for the previous 30-day period was within the 30-year normal range of precipitation. This visit occurred during the wet season with conditions for the previous 90 days rated as "wetter than normal". This visit did not occur during a drought or on the heels of a large rain event which could have adversely affected observations on the day of the site visit.

**APPROVED JURISDICTIONAL DETERMINATION FORM**  
**U.S. Army Corps of Engineers**

This form should be completed by following the instructions provided in Section IV of the JD Form Instructional Guidebook.

**SECTION I: BACKGROUND INFORMATION**

**A. REPORT COMPLETION DATE FOR APPROVED JURISDICTIONAL DETERMINATION (JD): 16 December 2021**

**B. DISTRICT OFFICE, FILE NAME, AND NUMBER: CELRP-RG-S 2020-00329**

**C. PROJECT LOCATION AND BACKGROUND INFORMATION:**

State: PA County/parish/borough: Allegheny City: West Mifflin  
Center coordinates of site (lat/long in degree decimal format): Lat. 40.376676° N, Long. -79.856871° W.  
Universal Transverse Mercator: 17S 597040, 4470193

Name of nearest waterbody: Thompson Run

Name of nearest Traditional Navigable Water (TNW) into which the aquatic resource flows: Monongahela River

Name of watershed or Hydrologic Unit Code (HUC): HUC12: 050200050808, Streets Run-Monongahela River

☒ Check if map/diagram of review area and/or potential jurisdictional areas is/are available upon request.

☐ Check if other sites (e.g., offsite mitigation sites, disposal sites, etc...) are associated with this action and are recorded on a different JD form.

**D. REVIEW PERFORMED FOR SITE EVALUATION (CHECK ALL THAT APPLY):**

☒ Office (Desk) Determination. Date: 16 December 2021

☒ Field Determination. Date(s): 28 October 2021

**SECTION II: SUMMARY OF FINDINGS**

**A. RHA SECTION 10 DETERMINATION OF JURISDICTION.**

There **Are no** "navigable waters of the U.S." within Rivers and Harbors Act (RHA) jurisdiction (as defined by 33 CFR part 329) in the review area. [Required]

☐ Waters subject to the ebb and flow of the tide.

☐ Waters are presently used, or have been used in the past, or may be susceptible for use to transport interstate or foreign commerce.

Explain: .

**B. CWA SECTION 404 DETERMINATION OF JURISDICTION.**

There **Are** "waters of the U.S." within Clean Water Act (CWA) jurisdiction (as defined by 33 CFR part 328) in the review area. [Required]

**1. Waters of the U.S.**

**a. Indicate presence of waters of U.S. in review area (check all that apply):<sup>1</sup>**

- ☐ TNWs, including territorial seas
- ☐ Wetlands adjacent to TNWs
- ☐ Relatively permanent waters<sup>2</sup> (RPWs) that flow directly or indirectly into TNWs
- ☒ Non-RPWs that flow directly or indirectly into TNWs
- ☐ Wetlands directly abutting RPWs that flow directly or indirectly into TNWs
- ☐ Wetlands adjacent to but not directly abutting RPWs that flow directly or indirectly into TNWs
- ☐ Wetlands adjacent to non-RPWs that flow directly or indirectly into TNWs
- ☐ Impoundments of jurisdictional waters
- ☐ Isolated (interstate or intrastate) waters, including isolated wetlands

**b. Identify (estimate) size of waters of the U.S. in the review area:**

Non-wetland waters: 1,123 linear feet: 4-8 width (ft) and/or 0.10-0.21 acres.

Wetlands: acres.

**c. Limits (boundaries) of jurisdiction based on: Established by OHWM.**

Elevation of established OHWM (if known): .

**2. Non-regulated waters/wetlands (check if applicable):<sup>3</sup>**

☐ Potentially jurisdictional waters and/or wetlands were assessed within the review area and determined to be not jurisdictional.  
Explain: .

<sup>1</sup> Boxes checked below shall be supported by completing the appropriate sections in Section III below.

<sup>2</sup> For purposes of this form, an RPW is defined as a tributary that is not a TNW and that typically flows year-round or has continuous flow at least "seasonally" (e.g., typically 3 months).

<sup>3</sup> Supporting documentation is presented in Section III.F.

### SECTION III: CWA ANALYSIS

#### A. TNWs AND WETLANDS ADJACENT TO TNWs

The agencies will assert jurisdiction over TNWs and wetlands adjacent to TNWs. If the aquatic resource is a TNW, complete Section III.A.1 and Section III.D.1. only; if the aquatic resource is a wetland adjacent to a TNW, complete Sections III.A.1 and 2 and Section III.D.1.; otherwise, see Section III.B below.

1. **TNW**

Identify TNW: .

Summarize rationale supporting determination: .

2. **Wetland adjacent to TNW**

Summarize rationale supporting conclusion that wetland is “adjacent”: .

#### B. CHARACTERISTICS OF TRIBUTARY (THAT IS NOT A TNW) AND ITS ADJACENT WETLANDS (IF ANY):

This section summarizes information regarding characteristics of the tributary and its adjacent wetlands, if any, and it helps determine whether or not the standards for jurisdiction established under *Rapanos* have been met.

The agencies will assert jurisdiction over non-navigable tributaries of TNWs where the tributaries are “relatively permanent waters” (RPWs), i.e. tributaries that typically flow year-round or have continuous flow at least seasonally (e.g., typically 3 months). A wetland that directly abuts an RPW is also jurisdictional. If the aquatic resource is not a TNW, but has year-round (perennial) flow, skip to Section III.D.2. If the aquatic resource is a wetland directly abutting a tributary with perennial flow, skip to Section III.D.4.

A wetland that is adjacent to but that does not directly abut an RPW requires a significant nexus evaluation. Corps districts and EPA regions will include in the record any available information that documents the existence of a significant nexus between a relatively permanent tributary that is not perennial (and its adjacent wetlands if any) and a traditional navigable water, even though a significant nexus finding is not required as a matter of law.

If the waterbody<sup>4</sup> is not an RPW, or a wetland directly abutting an RPW, a JD will require additional data to determine if the waterbody has a significant nexus with a TNW. If the tributary has adjacent wetlands, the significant nexus evaluation must consider the tributary in combination with all of its adjacent wetlands. This significant nexus evaluation that combines, for analytical purposes, the tributary and all of its adjacent wetlands is used whether the review area identified in the JD request is the tributary, or its adjacent wetlands, or both. If the JD covers a tributary with adjacent wetlands, complete Section III.B.1 for the tributary, Section III.B.2 for any onsite wetlands, and Section III.B.3 for all wetlands adjacent to that tributary, both onsite and offsite. The determination whether a significant nexus exists is determined in Section III.C below.

1. **Characteristics of non-TNWs that flow directly or indirectly into TNW**

(i) **General Area Conditions:**

Watershed size: 0.05 **square miles**

Drainage area: 0.05 **square miles**

Average annual rainfall: 45.9 inches

Average annual snowfall: 10.9 inches

(ii) **Physical Characteristics:**

(a) **Relationship with TNW:**

☐ Tributary flows directly into TNW.

☒ Tributary flows through **2** tributaries before entering TNW.

Project waters are **1 (or less)** river miles from TNW.

Project waters are **1 (or less)** river miles from RPW.

Project waters are **1 (or less)** aerial (straight) miles from TNW.

Project waters are **1 (or less)** aerial (straight) miles from RPW.

Project waters cross or serve as state boundaries. Explain: n/a.

Identify flow route to TNW<sup>5</sup>: TRS-2-S97 flows directly into Thompson Run which empties into the Monongahela River. Tributary stream order, if known: TRS-2-S97 is 3<sup>rd</sup> order where the Mon River is 1st.

<sup>4</sup> Note that the Instructional Guidebook contains additional information regarding swales, ditches, washes, and erosional features generally and in the arid West.

<sup>5</sup> Flow route can be described by identifying, e.g., tributary a, which flows through the review area, to flow into tributary b, which then flows into TNW.

(b) General Tributary Characteristics (check all that apply):

Tributary is: ☐ Natural  
☒ Artificial (man-made). Explain: Portions of the stream are enclosed.  
☒ Manipulated (man-altered). Explain: Surficial stream features exist within .

Tributary properties with respect to top of bank (estimate):

Average width: 4-8 feet

Average depth: 1 feet

Average side slopes: **3:1** .

Primary tributary substrate composition (check all that apply):

<input checked="" type="checkbox"/> Silts	<input checked="" type="checkbox"/> Sands	<input type="checkbox"/> Concrete
<input checked="" type="checkbox"/> Cobbles	<input checked="" type="checkbox"/> Gravel	<input type="checkbox"/> Muck
<input type="checkbox"/> Bedrock	<input type="checkbox"/> Vegetation. Type/% cover:	
<input type="checkbox"/> Other. Explain: .		

Tributary condition/stability [e.g., highly eroding, sloughing banks]. Explain: Incised in places, flat and full of outwash in others. The lower portion of this waterway is artificial/alterd and is lined with riprap or enclosed.

Presence of run/riffle/pool complexes. Explain: n/a.

Tributary geometry: **Relatively straight**

Tributary gradient (approximate average slope): 3.5 %

(c) Flow:

Tributary provides for: **Ephemeral flow**

Estimate average number of flow events in review area/year: **Pick List**

Describe flow regime: Stream is a mixed intermittent/ephemeral waterway; however, the ephemeral portion is the bottom rather than the upper half. Flow is believed to infiltrate into the ground at a certain point and the ephemeral portion of waterway likely only activates when precipitation events cause enough flow that infiltration rates are reduced or too low to intercept all the flow. The ephemeral channel contains evidence of flow, and although the number of flow events per year is unknown, it must be at a significant enough rate in order to maintain the channel physical characteristics.

Other information on duration and volume: Upper intermittent portion of stream is fed primarily by ground & stormwater flow.

Surface flow is: **Discrete and confined**. Characteristics: Stream is a mix of discrete and confined flow. Portion of the stream consist of a riprap-lined channel and stream enclosures/stormwater enclosures.

Subsurface flow: **Yes**. Explain findings: intermittent transition into ephemeral is believed to be influenced by infiltration where the flow would become groundwater which likely seeps into Thompson Run. No Dye tests were performed.

☐ Dye (or other) test performed: .

Tributary has (check all that apply):

<input checked="" type="checkbox"/> Bed and banks	
<input checked="" type="checkbox"/> OHWM <sup>6</sup> (check all indicators that apply):	
<input type="checkbox"/> clear, natural line impressed on the bank	<input type="checkbox"/> the presence of litter and debris
<input type="checkbox"/> changes in the character of soil	<input type="checkbox"/> destruction of terrestrial vegetation
<input type="checkbox"/> shelving	<input type="checkbox"/> the presence of wrack line
<input checked="" type="checkbox"/> vegetation matted down, bent, or absent	<input type="checkbox"/> sediment sorting
<input checked="" type="checkbox"/> leaf litter disturbed or washed away	<input type="checkbox"/> scour
<input checked="" type="checkbox"/> sediment deposition	<input type="checkbox"/> multiple observed or predicted flow events
<input type="checkbox"/> water staining	<input type="checkbox"/> abrupt change in plant community
<input type="checkbox"/> other (list): physical characteristics are more pronounce in the intermittent portions of stream than the	

ephemeral

☐ Discontinuous OHWM.<sup>7</sup> Explain: .

If factors other than the OHWM were used to determine lateral extent of CWA jurisdiction (check all that apply):

<input type="checkbox"/> High Tide Line indicated by:	<input type="checkbox"/> Mean High Water Mark indicated by:
<input type="checkbox"/> oil or scum line along shore objects	<input type="checkbox"/> survey to available datum;
<input type="checkbox"/> fine shell or debris deposits (foreshore)	<input type="checkbox"/> physical markings;
<input type="checkbox"/> physical markings/characteristics	<input type="checkbox"/> vegetation lines/changes in vegetation types.
<input type="checkbox"/> tidal gauges	
<input type="checkbox"/> other (list):	

<sup>6</sup>A natural or man-made discontinuity in the OHWM does not necessarily sever jurisdiction (e.g., where the stream temporarily flows underground, or where the OHWM has been removed by development or agricultural practices). Where there is a break in the OHWM that is unrelated to the waterbody's flow regime (e.g., flow over a rock outcrop or through a culvert), the agencies will look for indicators of flow above and below the break.

<sup>7</sup>Ibid.

**(iii) Chemical Characteristics:**

Characterize tributary (e.g., water color is clear, discolored, oily film; water quality; general watershed characteristics, etc.).

Explain: .

Identify specific pollutants, if known: Stream flow chemical characteristics are strongly influence by rainfall chemical characteristics. Stream is primarily fed by storm and groundwater inputs from upstream enclosed stormwater infrastructure. Roads, parking, and other impervious surfaces may carry oil, gas, and other potential chemical inputs associated with motor vehicles. Runoff from residential yards may carry fertilizers, herbicides, and/or pesticides. Previous steel mill, railroad, and mining operations within the vicinity may point to a potential source of pollutants if such pollutants would be present.

(iv) **Biological Characteristics. Channel supports (check all that apply):**

- ☒ Riparian corridor. Characteristics (type, average width): <5 foot.  
☐ Wetland fringe. Characteristics: .  
☐ Habitat for:  
☐ Federally Listed species. Explain findings: .  
☐ Fish/spawn areas. Explain findings: .  
☐ Other environmentally-sensitive species. Explain findings: .  
☒ Aquatic/wildlife diversity. Explain findings: some macroinvertebrates were identified in the intermittent upper portion of the stream, though not present in all site visits. No aquatic life was identified in the lower, ephemeral stretch of stream.

**2. Characteristics of wetlands adjacent to non-TNW that flow directly or indirectly into TNW**

(i) **Physical Characteristics:**

(a) General Wetland Characteristics:

Properties:

Wetland size: acres

Wetland type. Explain: .

Wetland quality. Explain: .

Project wetlands cross or serve as state boundaries. Explain: .

(b) General Flow Relationship with Non-TNW:

Flow is: **Pick List**. Explain: .

Surface flow is: **Pick List**

Characteristics: .

Subsurface flow: **Pick List**. Explain findings: .

☐ Dye (or other) test performed: .

(c) Wetland Adjacency Determination with Non-TNW:

☐ Directly abutting

☐ Not directly abutting

☐ Discrete wetland hydrologic connection. Explain: .

☐ Ecological connection. Explain: .

☐ Separated by berm/barrier. Explain: .

(d) Proximity (Relationship) to TNW

Project wetlands are **Pick List** river miles from TNW.

Project waters are **Pick List** aerial (straight) miles from TNW.

Flow is from: **Pick List**.

Estimate approximate location of wetland as within the **Pick List** floodplain.

(ii) **Chemical Characteristics:**

Characterize wetland system (e.g., water color is clear, brown, oil film on surface; water quality; general watershed characteristics; etc.). Explain: .

Identify specific pollutants, if known: .

(iii) **Biological Characteristics. Wetland supports (check all that apply):**

- ☐ Riparian buffer. Characteristics (type, average width): .  
☐ Vegetation type/percent cover. Explain: .  
☐ Habitat for:  
☐ Federally Listed species. Explain findings: .  
☐ Fish/spawn areas. Explain findings: .  
☐ Other environmentally-sensitive species. Explain findings: .  
☐ Aquatic/wildlife diversity. Explain findings: .

**3. Characteristics of all wetlands adjacent to the tributary (if any)**

All wetland(s) being considered in the cumulative analysis: **Pick List**

Approximately ( ) acres in total are being considered in the cumulative analysis.

For each wetland, specify the following:

Directly abuts? (Y/N)

Size (in acres)

Directly abuts? (Y/N)

Size (in acres)

Summarize overall biological, chemical and physical functions being performed: .

### C. SIGNIFICANT NEXUS DETERMINATION

A significant nexus analysis will assess the flow characteristics and functions of the tributary itself and the functions performed by any wetlands adjacent to the tributary to determine if they significantly affect the chemical, physical, and biological integrity of a TNW. For each of the following situations, a significant nexus exists if the tributary, in combination with all of its adjacent wetlands, has more than a speculative or insubstantial effect on the chemical, physical and/or biological integrity of a TNW. Considerations when evaluating significant nexus include, but are not limited to the volume, duration, and frequency of the flow of water in the tributary and its proximity to a TNW, and the functions performed by the tributary and all its adjacent wetlands. It is not appropriate to determine significant nexus based solely on any specific threshold of distance (e.g. between a tributary and its adjacent wetland or between a tributary and the TNW). Similarly, the fact an adjacent wetland lies within or outside of a floodplain is not solely determinative of significant nexus.

Draw connections between the features documented and the effects on the TNW, as identified in the *Rapanos* Guidance and discussed in the Instructional Guidebook. Factors to consider include, for example:

- Does the tributary, in combination with its adjacent wetlands (if any), have the capacity to carry pollutants or flood waters to TNWs, or to reduce the amount of pollutants or flood waters reaching a TNW?
- Does the tributary, in combination with its adjacent wetlands (if any), provide habitat and lifecycle support functions for fish and other species, such as feeding, nesting, spawning, or rearing young for species that are present in the TNW?
- Does the tributary, in combination with its adjacent wetlands (if any), have the capacity to transfer nutrients and organic carbon that support downstream foodwebs?
- Does the tributary, in combination with its adjacent wetlands (if any), have other relationships to the physical, chemical, or biological integrity of the TNW?

**Note: the above list of considerations is not inclusive and other functions observed or known to occur should be documented below:**

1. **Significant nexus findings for non-RPW that has no adjacent wetlands and flows directly or indirectly into TNWs.** Explain findings of presence or absence of significant nexus below, based on the tributary itself, then go to Section III.D: This waterway receives stormwater input from the upslope Duquesne community as well as some groundwater which combine to form the TRS-2-S97 stream. "Upstream" portions of this waterway consist of man-made conveyances, and the genesis of any identifiable surface waters begins on the southern edge of an existing transmission tower/oil tank access path. The stream begins as an intermittently flowing waters which is then is intercepted by a fracture in the bedrock and becomes groundwater. The remaining downstream channel, however, continues and resembles an ephemeral stream for its remaining flow path downhill, through a riprap-lined channel, and under the railyard via an enclosure before exiting into Thompson Run. Flow through the ephemeral portion of the waterway is likely during heavy precipitation events when infiltration into the fracture is reduced and/or flows are high volume. The ephemeral channel contains evidence of flow which empties directly into Thompson Run, an RPW tributary of the Monongahela River. This stream feature drains 0.05 square miles of adjacent upland area. The drainage area is very small and consists of 0.0009% of the total area in the HUC12. Physically, the stream directly abuts an RPW tributary of the Monongahela River (downstream TNW), and its contributing flows, though ephemeral, are not speculative or insubstantial. Flows from this stream have the potential to transport chemical inputs from upstream, including any pollutants which may enter from associated stormwater flow from road or residential features, into the downstream TNW. Biologically, the upstream intermittent portion of waterway was reported to contain macroinvertebrates were observed during one field visit but not found during others. No macros were found in the lower ephemeral portion. Intermittently flowing waters may provide some habitat for macros as well as a source of water for other local biota. Though the smallness of the drainage area is a consideration in the significance of this stream's downstream TNW connection, the adjacency and proximity of the surficial stream features to perennial waters is strongly considered a factor in this determination. TRS-2-S97's physical and chemical contribution to the downstream TNW is considered more than speculative and is not insubstantial given the discussion above and information in this AJD.
2. **Significant nexus findings for non-RPW and its adjacent wetlands, where the non-RPW flows directly or indirectly into TNWs.** Explain findings of presence or absence of significant nexus below, based on the tributary in combination with all of its adjacent wetlands, then go to Section III.D: .

3. **Significant nexus findings for wetlands adjacent to an RPW but that do not directly abut the RPW.** Explain findings of presence or absence of significant nexus below, based on the tributary in combination with all of its adjacent wetlands, then go to Section III.D: .

**D. DETERMINATIONS OF JURISDICTIONAL FINDINGS. THE SUBJECT WATERS/WETLANDS ARE (CHECK ALL THAT APPLY):**

1. **TNWs and Adjacent Wetlands.** Check all that apply and provide size estimates in review area:

- ☐ TNWs: linear feet width (ft), Or, acres.  
☐ Wetlands adjacent to TNWs: acres.

2. **RPWs that flow directly or indirectly into TNWs.**

- ☐ Tributaries of TNWs where tributaries typically flow year-round are jurisdictional. Provide data and rationale indicating that tributary is perennial: .  
☐ Tributaries of TNW where tributaries have continuous flow “seasonally” (e.g., typically three months each year) are jurisdictional. Data supporting this conclusion is provided at Section III.B. Provide rationale indicating that tributary flows seasonally: .

Provide estimates for jurisdictional waters in the review area (check all that apply):

- ☐ Tributary waters: linear feet width (ft).  
☐ Other non-wetland waters: acres.  
Identify type(s) of waters: .

3. **Non-RPWs<sup>8</sup> that flow directly or indirectly into TNWs.**

- ☒ Waterbody that is not a TNW or an RPW, but flows directly or indirectly into a TNW, and it has a significant nexus with a TNW is jurisdictional. Data supporting this conclusion is provided at Section III.C.

Provide estimates for jurisdictional waters within the review area (check all that apply):

- ☒ Tributary waters: **1,123** linear feet **4-8** width (ft).  
☐ Other non-wetland waters: acres.  
Identify type(s) of waters: .

4. **Wetlands directly abutting an RPW that flow directly or indirectly into TNWs.**

- ☐ Wetlands directly abut RPW and thus are jurisdictional as adjacent wetlands.  
☐ Wetlands directly abutting an RPW where tributaries typically flow year-round. Provide data and rationale indicating that tributary is perennial in Section III.D.2, above. Provide rationale indicating that wetland is directly abutting an RPW: .  
☐ Wetlands directly abutting an RPW where tributaries typically flow “seasonally.” Provide data indicating that tributary is seasonal in Section III.B and rationale in Section III.D.2, above. Provide rationale indicating that wetland is directly abutting an RPW: .

Provide acreage estimates for jurisdictional wetlands in the review area: acres.

5. **Wetlands adjacent to but not directly abutting an RPW that flow directly or indirectly into TNWs.**

- ☐ Wetlands that do not directly abut an RPW, but when considered in combination with the tributary to which they are adjacent and with similarly situated adjacent wetlands, have a significant nexus with a TNW are jurisdictional. Data supporting this conclusion is provided at Section III.C.

Provide acreage estimates for jurisdictional wetlands in the review area: acres.

6. **Wetlands adjacent to non-RPWs that flow directly or indirectly into TNWs.**

- ☐ Wetlands adjacent to such waters, and have when considered in combination with the tributary to which they are adjacent and with similarly situated adjacent wetlands, have a significant nexus with a TNW are jurisdictional. Data supporting this conclusion is provided at Section III.C.

Provide estimates for jurisdictional wetlands in the review area: acres.

---

<sup>8</sup>See Footnote # 3.



**7. Impoundments of jurisdictional waters.<sup>9</sup>**

As a general rule, the impoundment of a jurisdictional tributary remains jurisdictional.

- ☐ Demonstrate that impoundment was created from “waters of the U.S.,” or
- ☐ Demonstrate that water meets the criteria for one of the categories presented above (1-6), or
- ☐ Demonstrate that water is isolated with a nexus to commerce (see E below).

**E. ISOLATED [INTERSTATE OR INTRA-STATE] WATERS, INCLUDING ISOLATED WETLANDS, THE USE, DEGRADATION OR DESTRUCTION OF WHICH COULD AFFECT INTERSTATE COMMERCE, INCLUDING ANY SUCH WATERS (CHECK ALL THAT APPLY):<sup>10</sup>**

- ☐ which are or could be used by interstate or foreign travelers for recreational or other purposes.
- ☐ from which fish or shellfish are or could be taken and sold in interstate or foreign commerce.
- ☐ which are or could be used for industrial purposes by industries in interstate commerce.
- ☐ Interstate isolated waters. Explain: .
- ☐ Other factors. Explain: .

**Identify water body and summarize rationale supporting determination:** .

Provide estimates for jurisdictional waters in the review area (check all that apply):

- ☐ Tributary waters: linear feet width (ft).
- ☐ Other non-wetland waters: acres.  
Identify type(s) of waters: .
- ☐ Wetlands: acres.

**F. NON-JURISDICTIONAL WATERS, INCLUDING WETLANDS (CHECK ALL THAT APPLY):**

- ☐ If potential wetlands were assessed within the review area, these areas did not meet the criteria in the 1987 Corps of Engineers Wetland Delineation Manual and/or appropriate Regional Supplements.
- ☐ Review area included isolated waters with no substantial nexus to interstate (or foreign) commerce.
  - ☐ Prior to the Jan 2001 Supreme Court decision in “*SWANCC*,” the review area would have been regulated based solely on the “Migratory Bird Rule” (MBR).
- ☐ Waters do not meet the “Significant Nexus” standard, where such a finding is required for jurisdiction. Explain: .
- ☐ Other: (explain, if not covered above): .

Provide acreage estimates for non-jurisdictional waters in the review area, where the sole potential basis of jurisdiction is the MBR factors (i.e., presence of migratory birds, presence of endangered species, use of water for irrigated agriculture), using best professional judgment (check all that apply):

- ☐ Non-wetland waters (i.e., rivers, streams): linear feet width (ft).
- ☐ Lakes/ponds: acres.
- ☐ Other non-wetland waters: acres. List type of aquatic resource: .
- ☐ Wetlands: acres.

Provide acreage estimates for non-jurisdictional waters in the review area that do not meet the “Significant Nexus” standard, where such a finding is required for jurisdiction (check all that apply):

- ☐ Non-wetland waters (i.e., rivers, streams): linear feet, width (ft).
- ☐ Lakes/ponds: acres.
- ☐ Other non-wetland waters: acres. List type of aquatic resource: .
- ☐ Wetlands: acres.

**SECTION IV: DATA SOURCES.**

**A. SUPPORTING DATA. Data reviewed for JD (check all that apply - checked items shall be included in case file and, where checked and requested, appropriately reference sources below):**

- ☒ Maps, plans, plots or plat submitted by or on behalf of the applicant/consultant: 53C3 project plans: Delineation Reports (with addendums).
- ☐ Data sheets prepared/submitted by or on behalf of the applicant/consultant.
  - ☐ Office concurs with data sheets/delineation report.
  - ☐ Office does not concur with data sheets/delineation report.

<sup>9</sup> To complete the analysis refer to the key in Section III.D.6 of the Instructional Guidebook.

<sup>10</sup> Prior to asserting or declining CWA jurisdiction based solely on this category, Corps Districts will elevate the action to Corps and EPA HQ for review consistent with the process described in the Corps/EPA Memorandum Regarding CWA Act Jurisdiction Following Rapanos.

- ☐ Data sheets prepared by the Corps: .
- ☐ Corps navigable waters' study: .
- ☒ U.S. Geological Survey Hydrologic Atlas: .
  - ☒ USGS NHD data.
  - ☒ USGS 8 and 12 digit HUC maps.
- ☒ U.S. Geological Survey map(s). Cite scale & quad name: Braddock 2019.
- ☐ USDA Natural Resources Conservation Service Soil Survey. Citation: .
- ☒ National wetlands inventory map(s). Cite name: USFWS "Wetlands Mapper".
- ☐ State/Local wetland inventory map(s): .
- ☐ FEMA/FIRM maps: .
- ☐ 100-year Floodplain Elevation is: (National Geodetic Vertical Datum of 1929)
- ☒ Photographs: ☒ Aerial (Name & Date): Google Earth: Oct. 2020.  
or ☒ Other (Name & Date): Site photos provided with Delineation Reports; Corps on-site photographs Oct. 2021.
- ☐ Previous determination(s). File no. and date of response letter: .
- ☐ Applicable/supporting case law: .
- ☐ Applicable/supporting scientific literature: .
- ☐ Other information (please specify): .

**B. ADDITIONAL COMMENTS TO SUPPORT JD:** No flowing water was observed during the 28 Oct. 2021 site visit within the ephemeral portion of stream. Antecedent Precipitation Tool (APT) was utilized to determine whether conditions were within the normal range of climatic conditions on the day of the site visit. According to the APT, rainfall for the previous 30-day period was within the 30-year normal range of precipitation. This visit occurred during the wet season with conditions for the previous 90 days rated as "wetter than normal". This visit did not occur during a drought or on the heels of a large rain event which could have adversely affected observations on the day of the site visit.