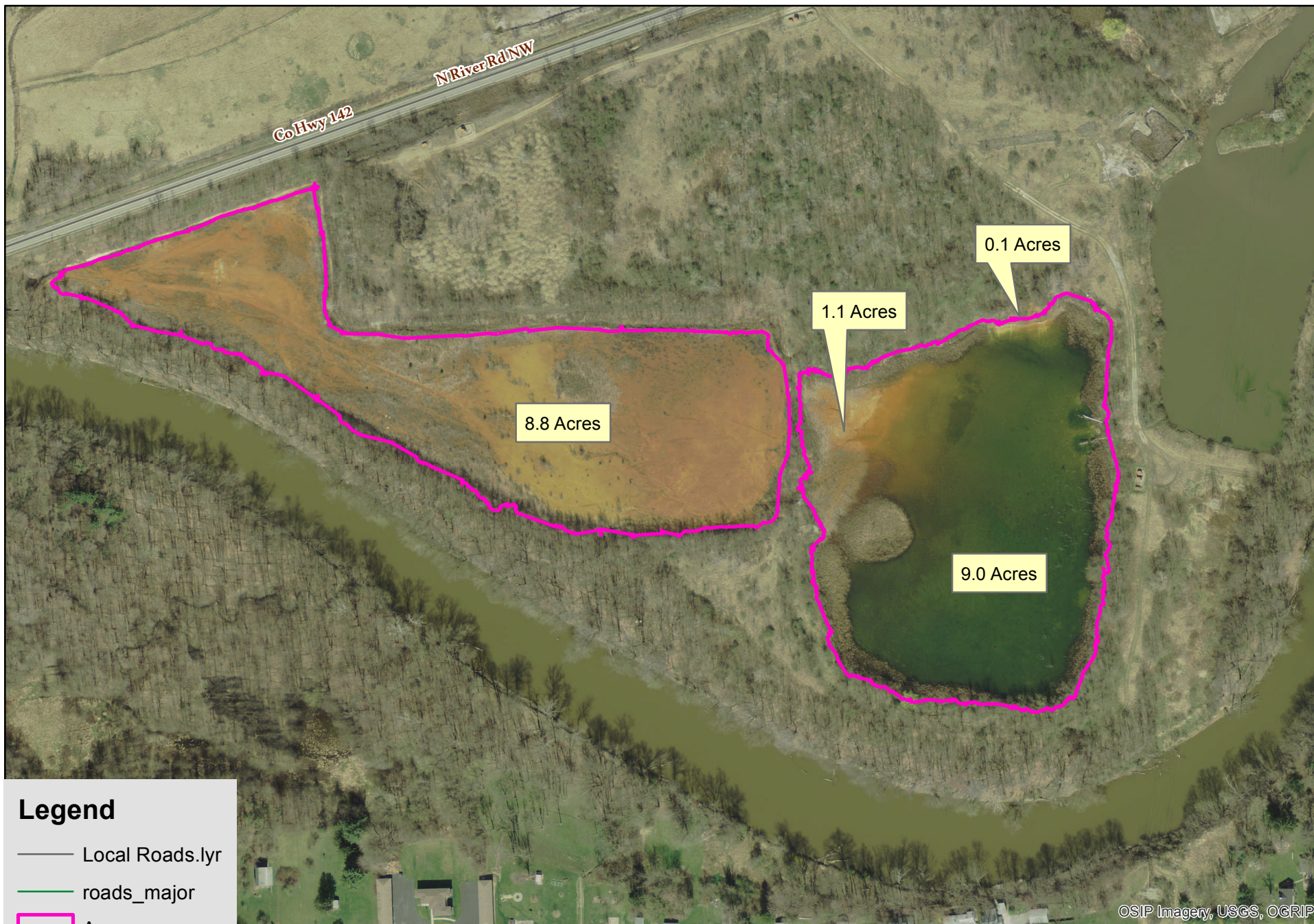


Copperweld





U.S. Fish and Wildlife Service







National Wetlands Inventory

Copperweld Site

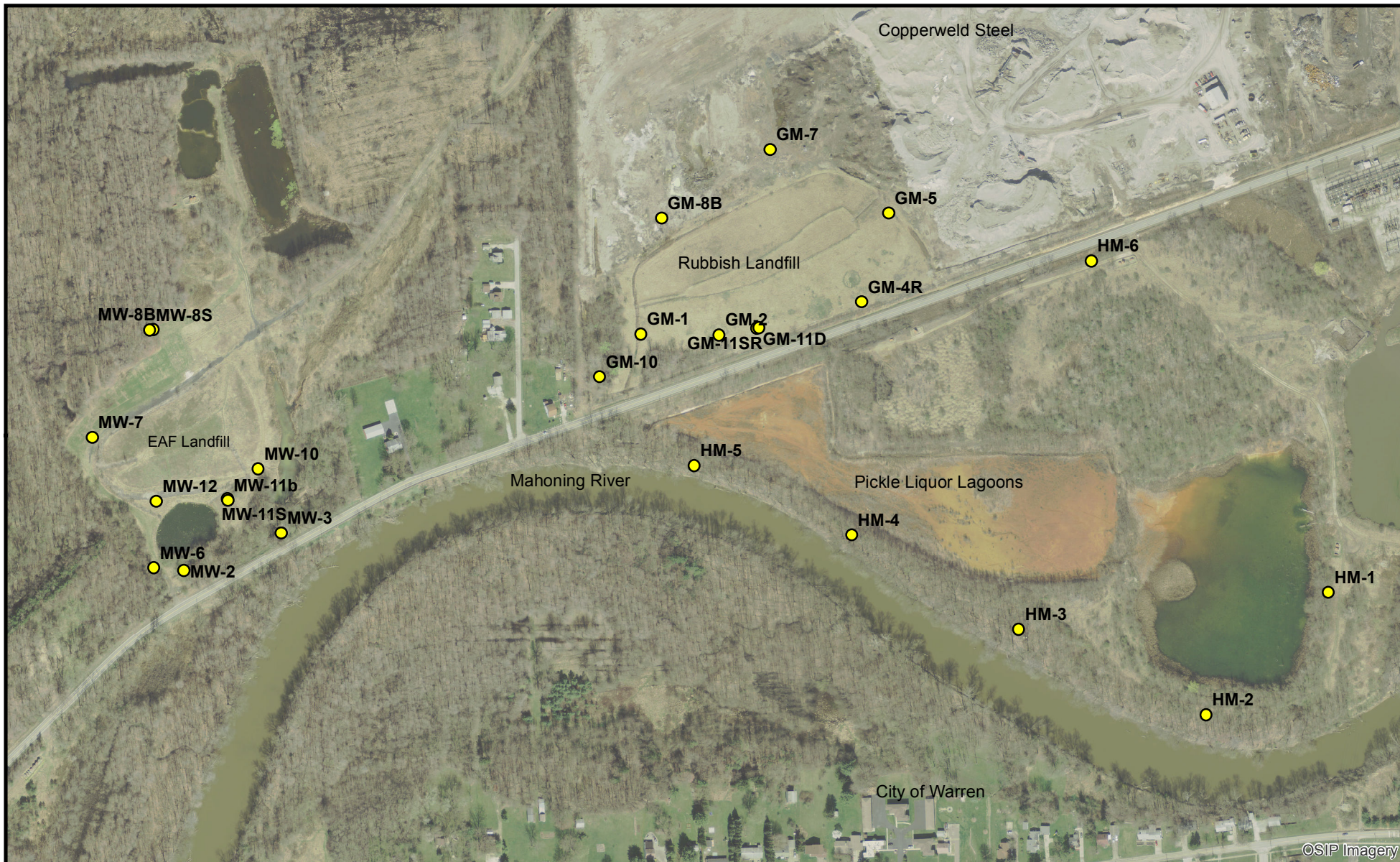


July 20, 2021

Wetlands

 Estuarine and Marine Deepwater	 Freshwater Emergent Wetland	 Lake
 Estuarine and Marine Wetland	 Freshwater Forested/Shrub Wetland	 Other
	 Freshwater Pond	 Riverine

This map is for general reference only. The US Fish and Wildlife Service is not responsible for the accuracy or currentness of the base data shown on this map. All wetlands related data should be used in accordance with the layer metadata found on the Wetlands Mapper web site.



Copperweld Steel

Figure 3
Monitoring Well Location Map
May 2016 Sampling Event
Warren, Ohio

Legend

● Monitoring Well

0 200 400 800 Feet