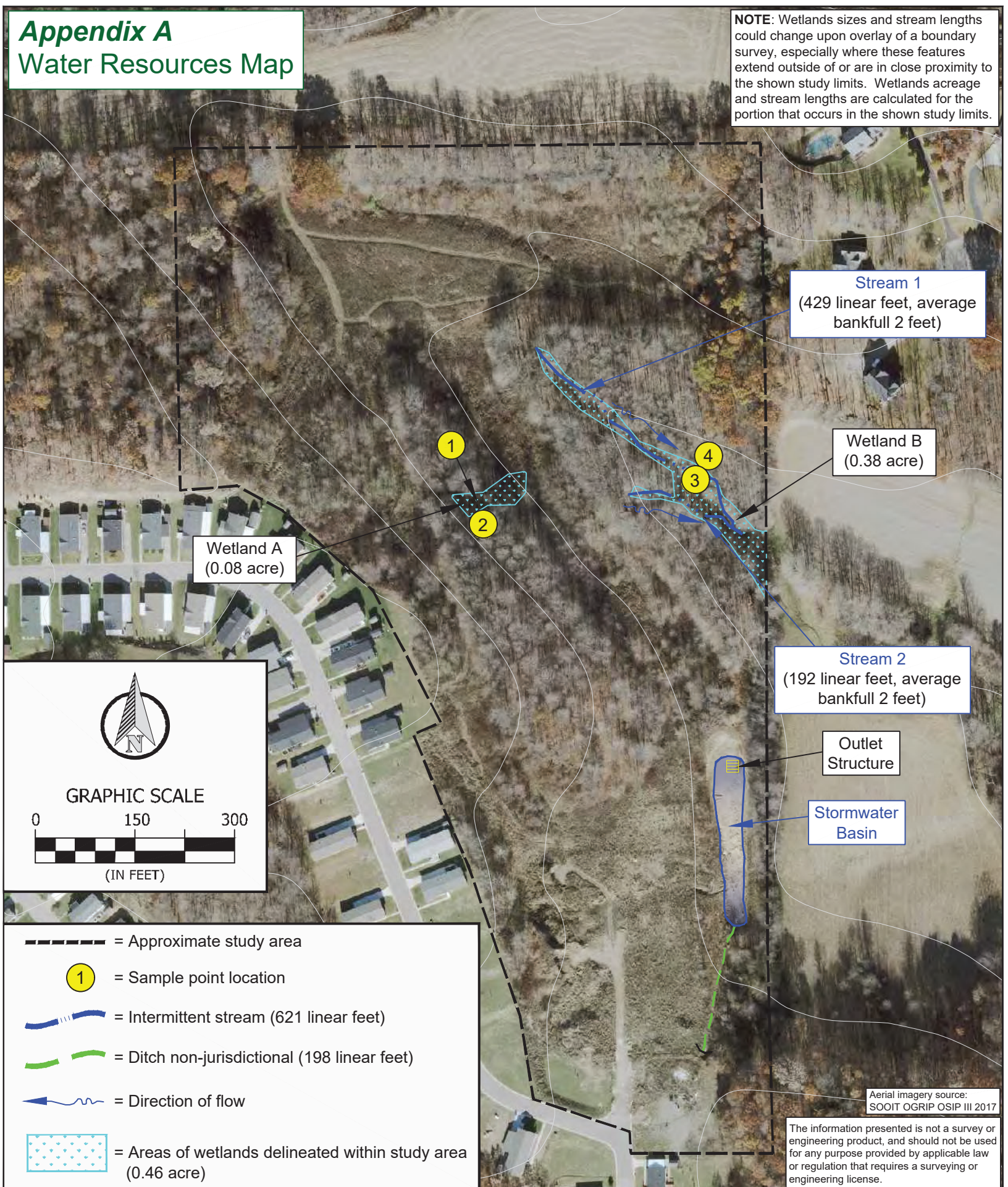


Appendix A Water Resources Map

NOTE: Wetlands sizes and stream lengths could change upon overlay of a boundary survey, especially where these features extend outside of or are in close proximity to the shown study limits. Wetlands acreage and stream lengths are calculated for the portion that occurs in the shown study limits.



Wetland A
(0.08 acre)

Stream 1
(429 linear feet, average bankfull 2 feet)

Wetland B
(0.38 acre)

Stream 2
(192 linear feet, average bankfull 2 feet)

Outlet Structure

Stormwater Basin

GRAPHIC SCALE
0 150 300
(IN FEET)

- = Approximate study area
- ① = Sample point location
- = Intermittent stream (621 linear feet)
- = Ditch non-jurisdictional (198 linear feet)
- = Direction of flow
- = Areas of wetlands delineated within study area (0.46 acre)

Aerial imagery source:
SOOIT OGRIP OSIP III 2017

The information presented is not a survey or engineering product, and should not be used for any purpose provided by applicable law or regulation that requires a surveying or engineering license.