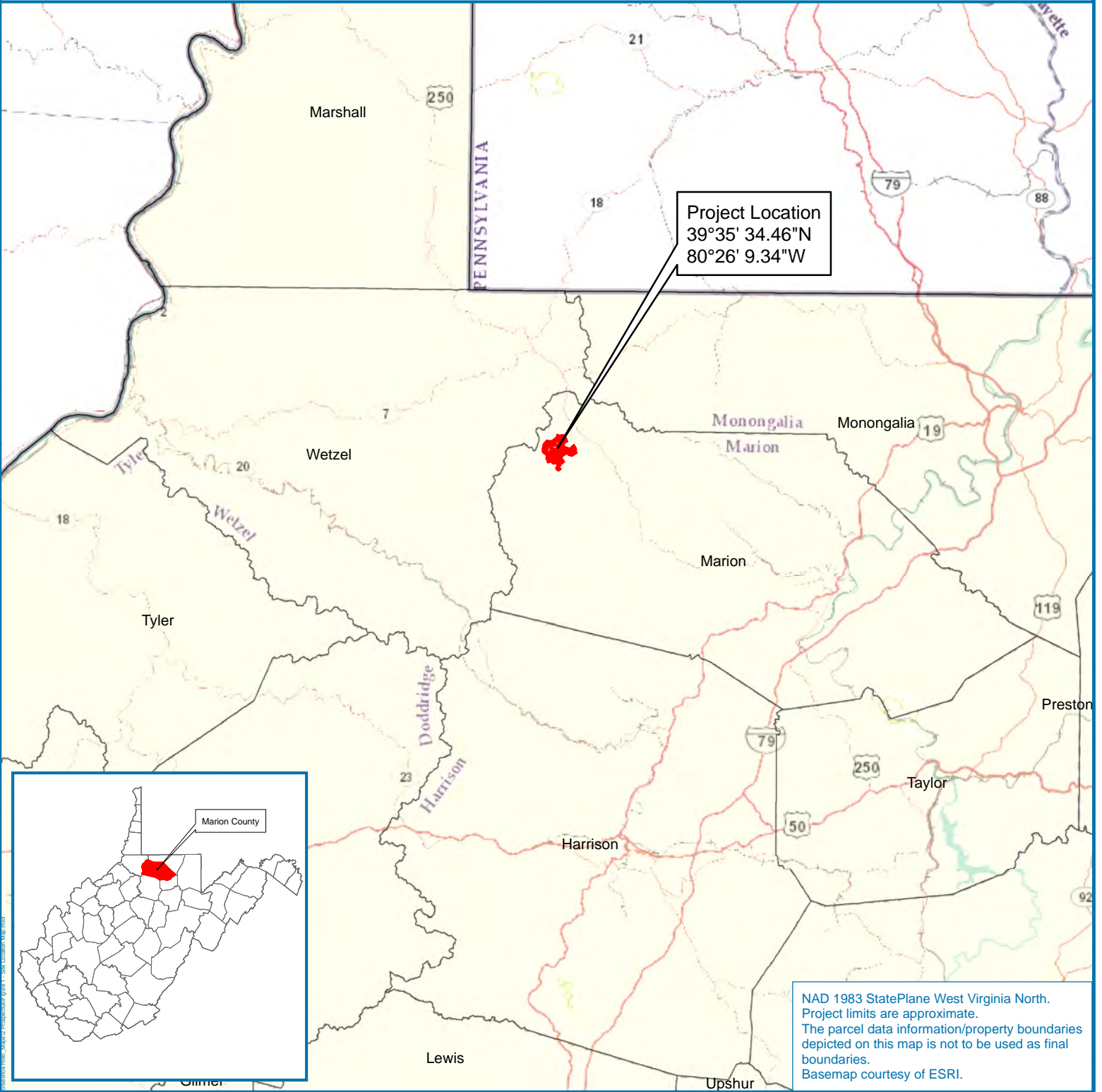


Directions to the Site from Morgantown WV: Take High St to US-119 S/University Ave (0.2 Mi). Head southwest on High St toward Chancery Row (0.2 Mi). Turn right onto Kirk St (0.1 Mi). Follow US-119 S, I-79 S and US-250 N to Glovers Gap-Seven Pines in West Augusta (40.1 Mi). Turn left onto US-119 S/University Ave (3.5 miles). Turn right onto the ramp to Fairmont (0.4 Mi). Merge onto I-68 W (0.4 miles). Use the left 2 lanes to merge onto I-79 S toward Fairmont (13.1 Mi). Take exit 136 toward Co Rd 31/2/Stoney Rd (0.5 Mi). Turn left onto WV-273/Fairmont Gateway Connector N (0.4 Mi). At the traffic circle, take the 2nd exit onto Fairmont Gateway Connector N (0.2 Mi). At the traffic circle, take the 2nd exit and stay on Fairmont Gateway Connector N (0.2 Mi). Continue onto Jefferson St (0.4 Mi). Turn left onto Jackson St (0.1 Mi). Keep right to stay on Jackson St (210 Ft). Turn right onto US-250 N/Cleveland Ave (20.8 Mi). Drive to Glovers Gap-Seven Pines (2.7 Mi). Turn left onto Glovers Gap-Seven Pines (0.9 Mi). Turn right to stay on Glovers Gap-Seven Pines (1.8 Mi) Arrive at destination.



Project Location
 39°35' 34.46"N
 80°26' 9.34"W

NAD 1983 StatePlane West Virginia North.
 Project limits are approximate.
 The parcel data information/property boundaries
 depicted on this map is not to be used as final
 boundaries.
 Basemap courtesy of ESRI.

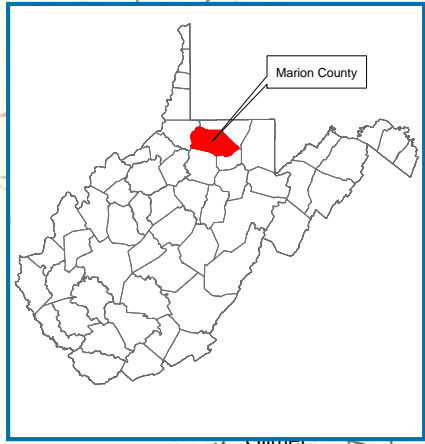
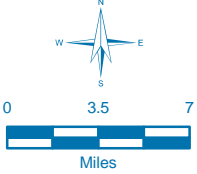
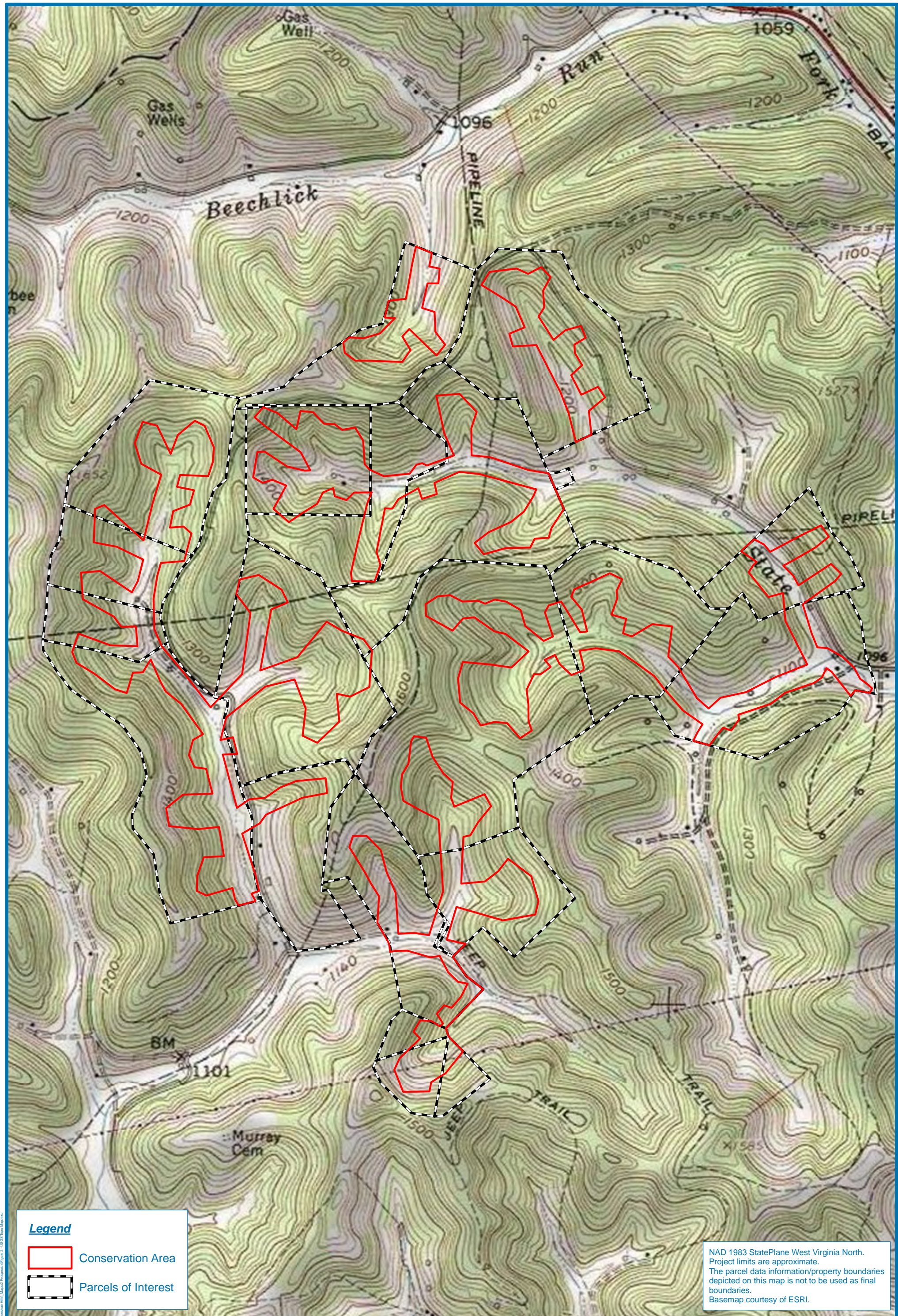


Figure 1: Site Location Map
Horseshoe Hills Mitigation Bank
 Marion County, West Virginia
 Glover Gap Quadrangle



Date: 8/20/2020
Drawn by: NDR
Checked by: KD
1 in = 7 miles

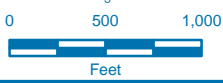




Legend

- Conservation Area
- Parcels of Interest

NAD 1983 StatePlane West Virginia North.
 Project limits are approximate.
 The parcel data information/property boundaries
 depicted on this map is not to be used as final
 boundaries.
 Basemap courtesy of ESRI.



**Figure 2: USGS Topographic Map
 Horseshoe Hills Mitigation Bank**

Marion County, West Virginia
 Glover Gap Quadrangle

Date: 8/20/2020

Drawn by: NDR

Checked by: KD

1 in = 1,000 feet

