

Legend

- Solid
- Dashed
- Dotted
- Cross-hatched
- Diagonal hatched
- Horizontal hatched
- Vertical hatched
- Stippled
- White

- Thin black line
- Thick black line
- Dashed black line
- Dotted black line
- Cross-hatched line
- Diagonal hatched line
- Horizontal hatched line
- Vertical hatched line
- Stippled line
- White line

STRUCTURES VISIBLE WITHIN VIEWSHED-7

0 750 1,500 3,000 4,500
1 inch equals 1,500 feet

REFERENCE:
Viewshed was created from a 3 meter DEM
(digital elevation model)

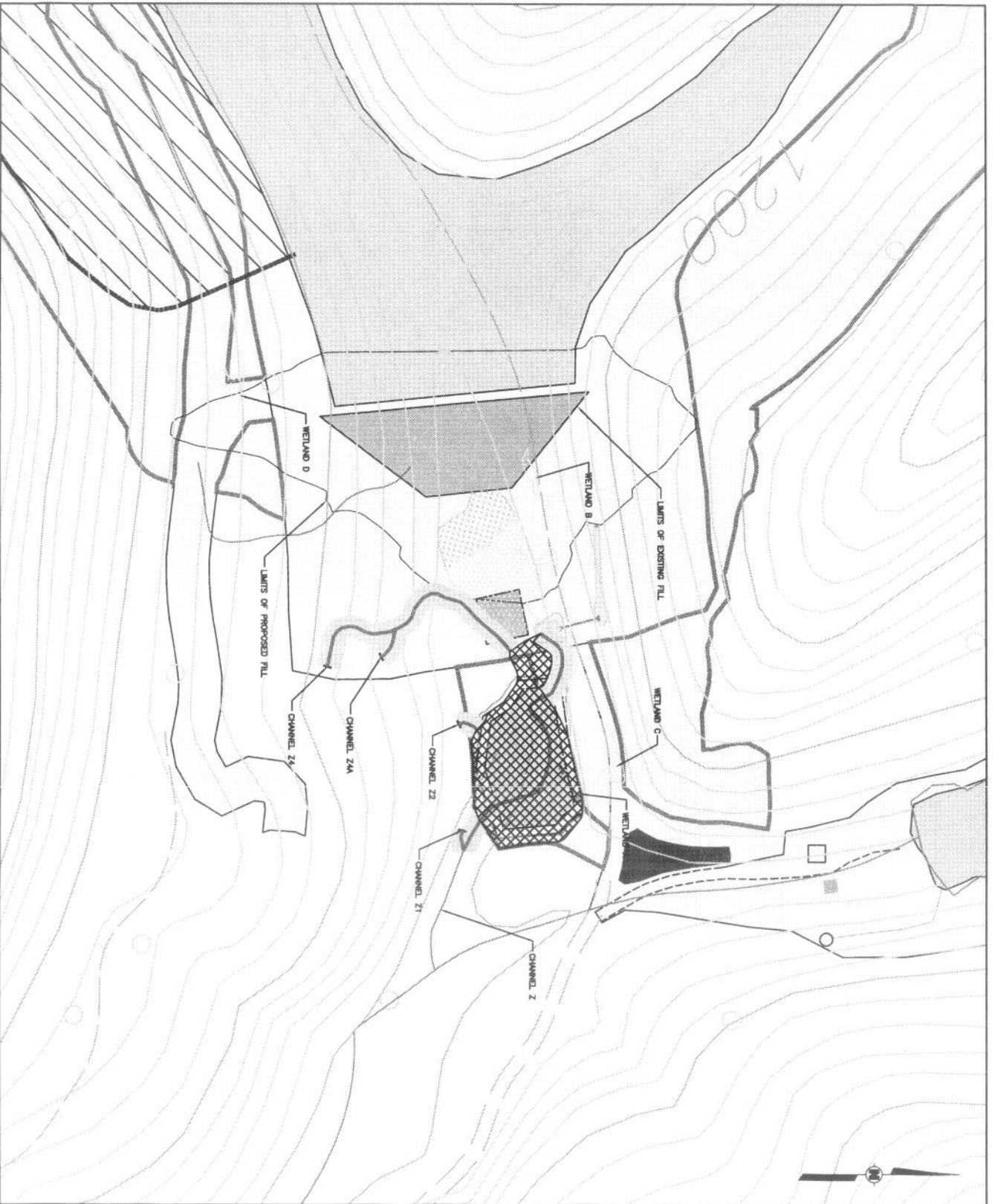
DATE	DESCRIPTION	BY
10/11/11	VIEWSHED-7	JKM

Beckley WV
DPO 253443
Alliance Consulting, Inc.
CANONSBURG, PA
(724) 745-3438
800-456-7890

VIEWSHED MAP

LOVERIDGE MINE NO. 22
HARVEY RUN COAL REFUSE DISPOSAL FACILITY
Prepared For
CC CONSOLIDATION COAL COMPANY
P.O. BOX 100, OSAGE, WEST VIRGINIA 26543

DRAWN BY	JKM	2/10/08	PROJECT NO.	
CHECKED BY	JKM	12/10/08		
APPROVED BY	JKM	12/10/09	DRAWING NO.	888-171-02



LEGEND

	STREAM RESTORATION AREAS
	WETLAND REGENERATION
	EXISTING FORESTED WETLAND
	EXISTING SCRUB/SHRUB WETLAND
	PROPOSED WETLAND RESTORATION AREAS

TEMPORARY IMPACT LENGTH/ACREAGES			
	IMPACTED LENGTH/ACREAGE	RESTORED LENGTH/ACREAGE	
WETLAND A	1.31 ACRES	1.33 ACRES	
CHANNEL Z	560	560	
CHANNEL Z2	37	37	
CHANNEL Z4	592	592	
CHANNEL Z4A	75	75	



REV.	DATE	DESCRIPTION	P.L.

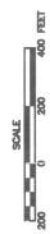
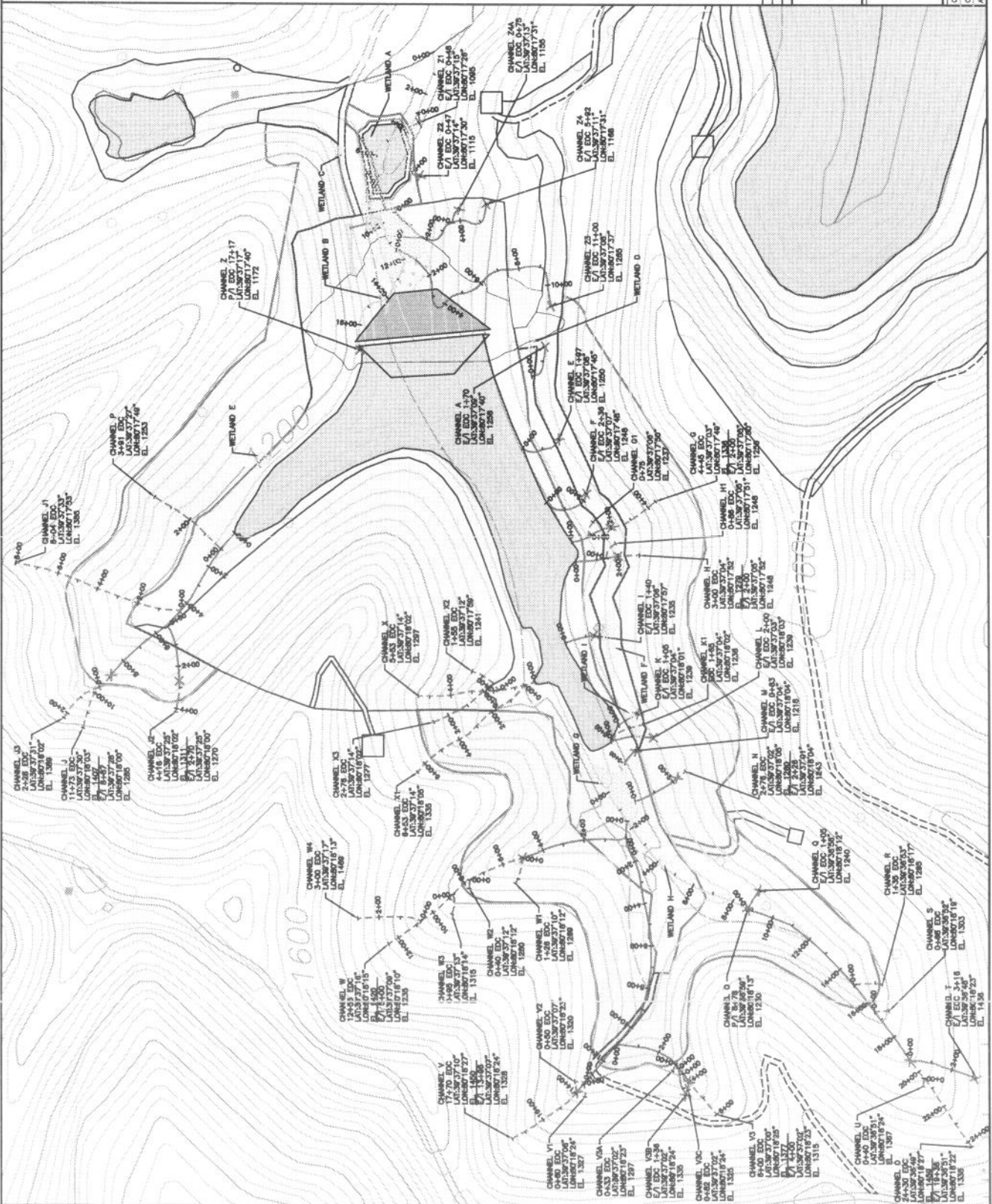
Alliance Consulting, Inc.
 CONSULTING ENGINEERS • ARCHITECTS • SURVEYORS
 1000 W. 10TH AVENUE, SUITE 100
 DENVER, CO 80202
 PHONE: (303) 733-1100
 FAX: (303) 733-1101
 WWW: WWW.ALIANCECONSULTING.COM

STREAM RESTORATION MAP
 HAVERTY RUN COAL REFUSE DISPOSAL FACILITY
 MONROGUE COUNTY, WEST VIRGINIA
 Prepared for:
 CONSOLIDATION COAL COMPANY
 MONROGUE COUNTY, WEST VIRGINIA

CAD BY: JEC 08/14/11 PROJECT NO.: 809-173-178
 CHECKED BY: [blank] DRAWING NO.: 809-173-E3
 APPROVED BY: [blank]

LEGEND

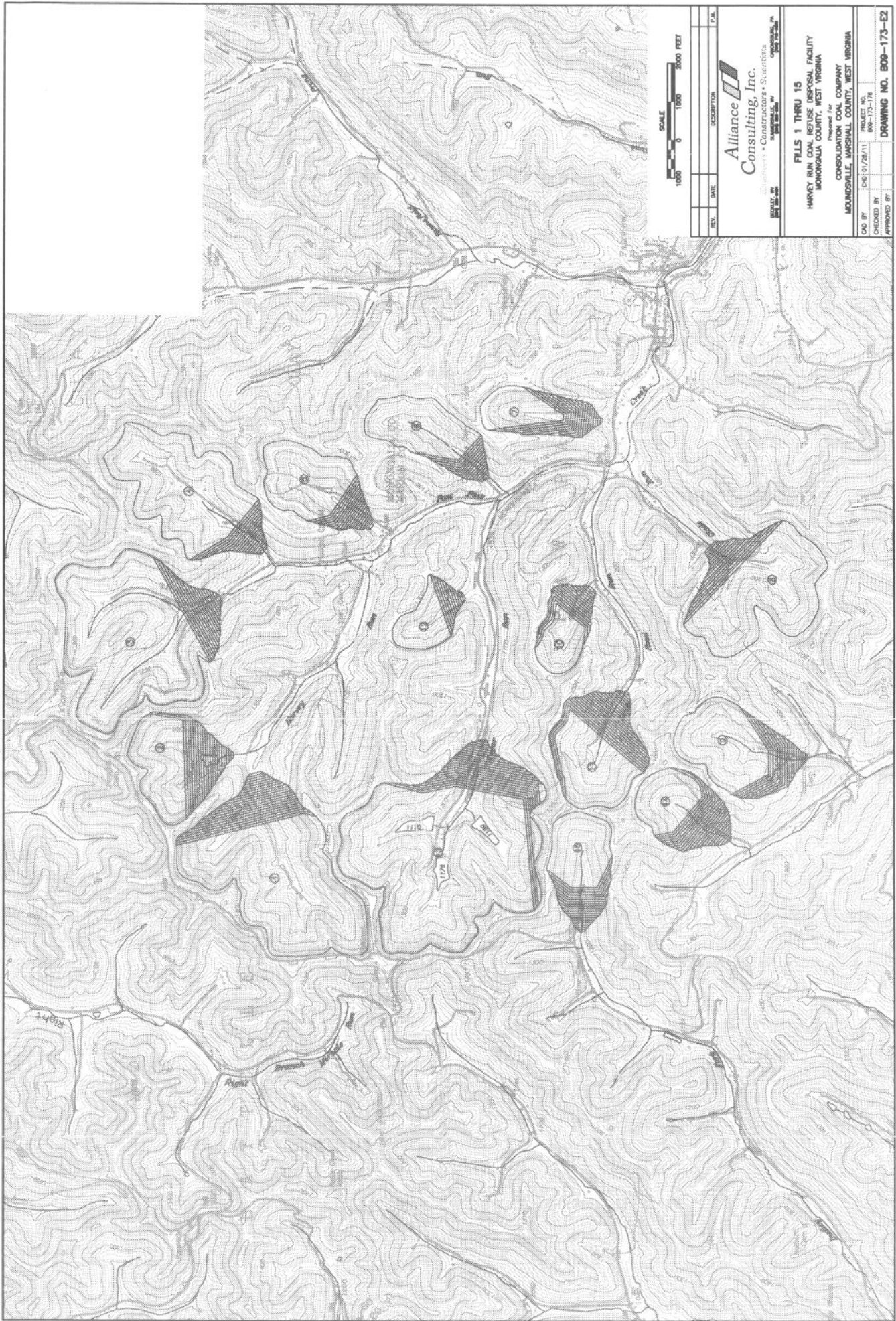
- INTERMITTENT STREAM CHANNEL
- PERENNIAL STREAM CHANNEL
- EPHEMERAL STREAM CHANNEL
- STREAM INTERFACE POINT
- PERENNIAL/INTERMITTENT
- STREAM INTERFACE POINT
- FORESTED WETLANDS
- WETLANDS
- IBR NO. 64 AREA
- CURRENT PERMIT AREA



REV	DATE	DESCRIPTION	BY
1	04/16/11	ADD PERMIT INFORMATION	BM
2	07/25/11	GENERAL REVISIONS PER A.C.D. COMMENTS	BM

Alliance Consulting, Inc.
 1000 W. 10th Street
 Suite 100
 Moundsville, WV 26041
 Phone: 304.241.1111
 Fax: 304.241.1112
 Email: info@allianceconsulting.com

STREAM DELINEATION MAP
 HARBET RUN CANAL REUSE DISPOSAL FACILITY
 MONROVIA COUNTY, WEST VIRGINIA
 Prepared for
 CONSOLIDATION COAL COMPANY
 MONROVIA COUNTY, WEST VIRGINIA
 MOUNDSVILLE, MARSHALL COUNTY, WEST VIRGINIA
 DEDICATED BY: 06/01/16
 PROJECT NO.: 808-173-178
 DRAWING NO.: 808-173-E1



SCALE
1000 0 1000 2000 FEET

REV.	DATE	DESCRIPTION	P.M.

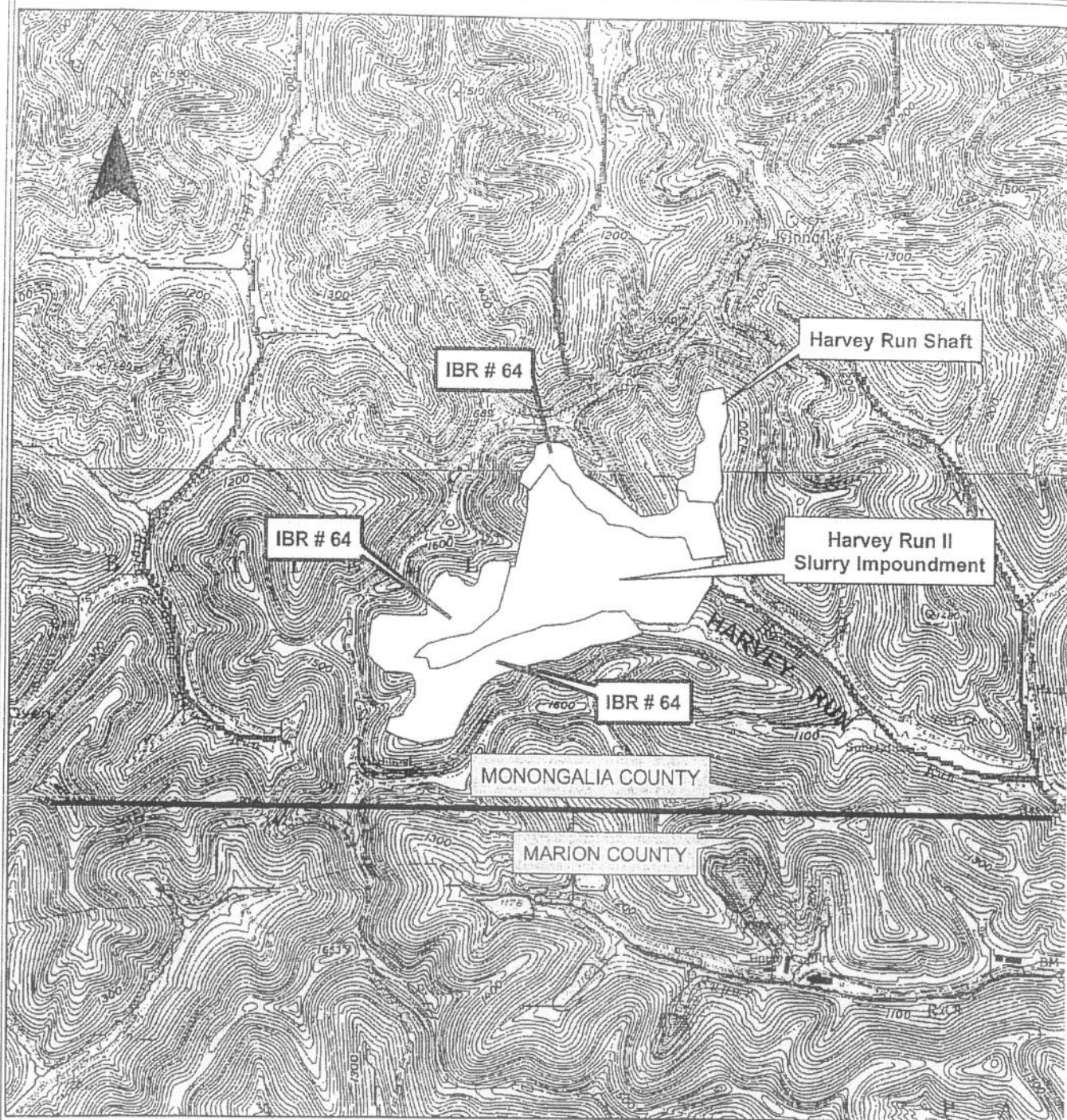
Alliance
Consulting, Inc.

Geotechnical • Construction • Scientific
ENGINEERS • ARCHITECTS • PLANNERS
1015 WEST 10TH AVENUE
DENVER, CO 80202
303.733.1100
WWW.AICONSULTING.COM

FILLS 1 THRU 15
HARVEY RUN COAL REFUSE DISPOSAL FACILITY
MORGAN COUNTY, WEST VIRGINIA
CONSOLIDATION CO. COMPANY
MOUNDSVILLE, MARSHALL COUNTY, WEST VIRGINIA

DWG BY	CHS 01/28/11	SCALE 1"=100'	DATE 01/28/11
CHECKED BY			
APPROVED BY			

DRAWING NO. 600-173-E2



LOCATION M A P

for

CONSOLIDATION COAL COMPANY
U-78-83 IBR No. 64
Harvey Run II Slurry Impoundment
Battelle District, MONONGALIA COUNTY

March 24, 2011