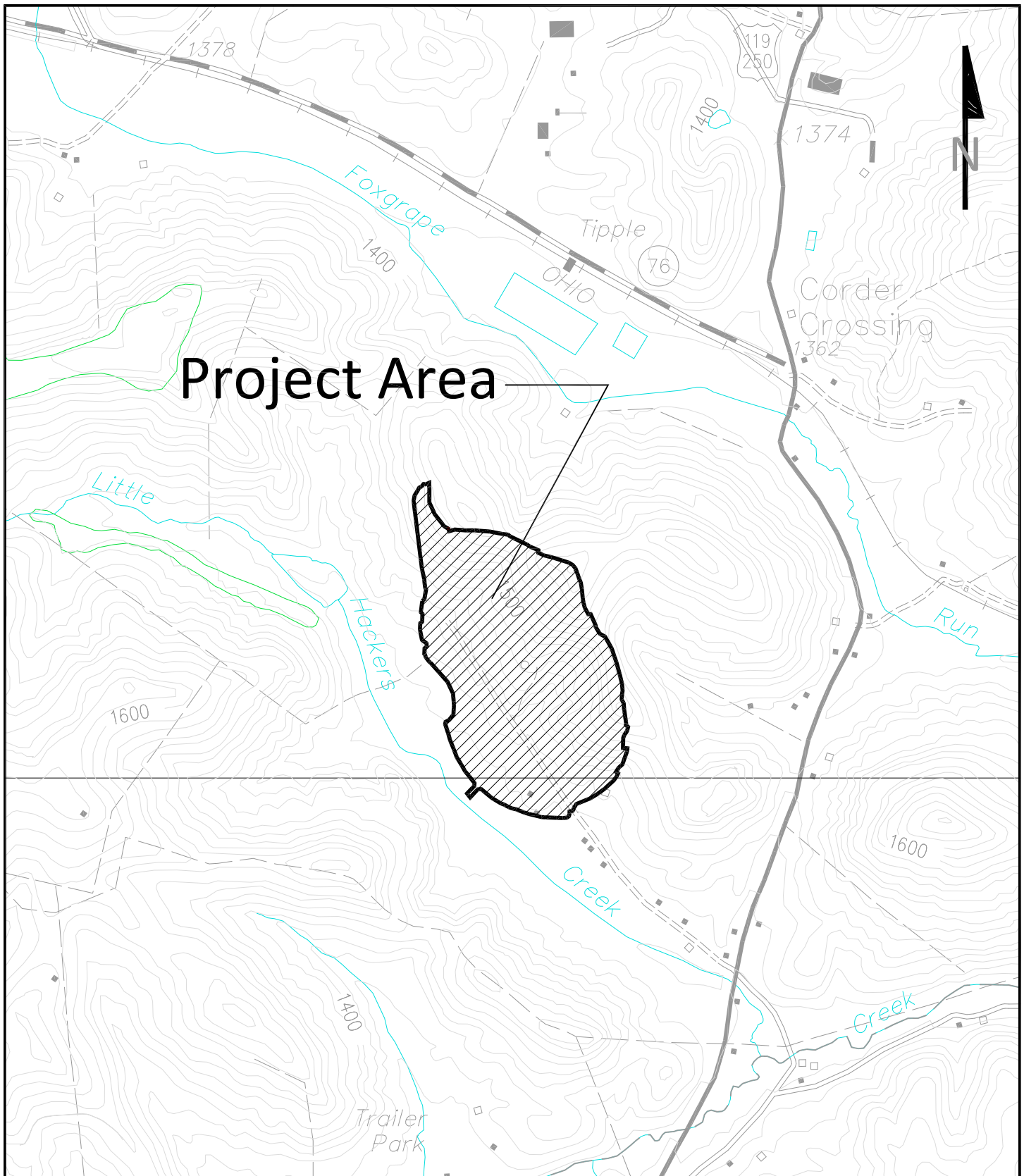


## LOCATION MAP

SCALE: 1"=1 Mile

Project will discharge into  
 Unnamed Tributaries of an Unnamed Tributary and an Unnamed Tributary  
 of the Tygart Valley River of the Monongahela River.  
 The site is located 3.5 miles north of Philippi, WV  
 in PLEASANT DISTRICT, BARBOUR COUNTY, WV  
 Philippi, WV 7.5' Topographic Quadrangle



## Wolf Run Mining LLC -- Leer South Complex

Sidehill Coarse Refuse Fill Project

General Location Map

Scale: 1" = 1000'



