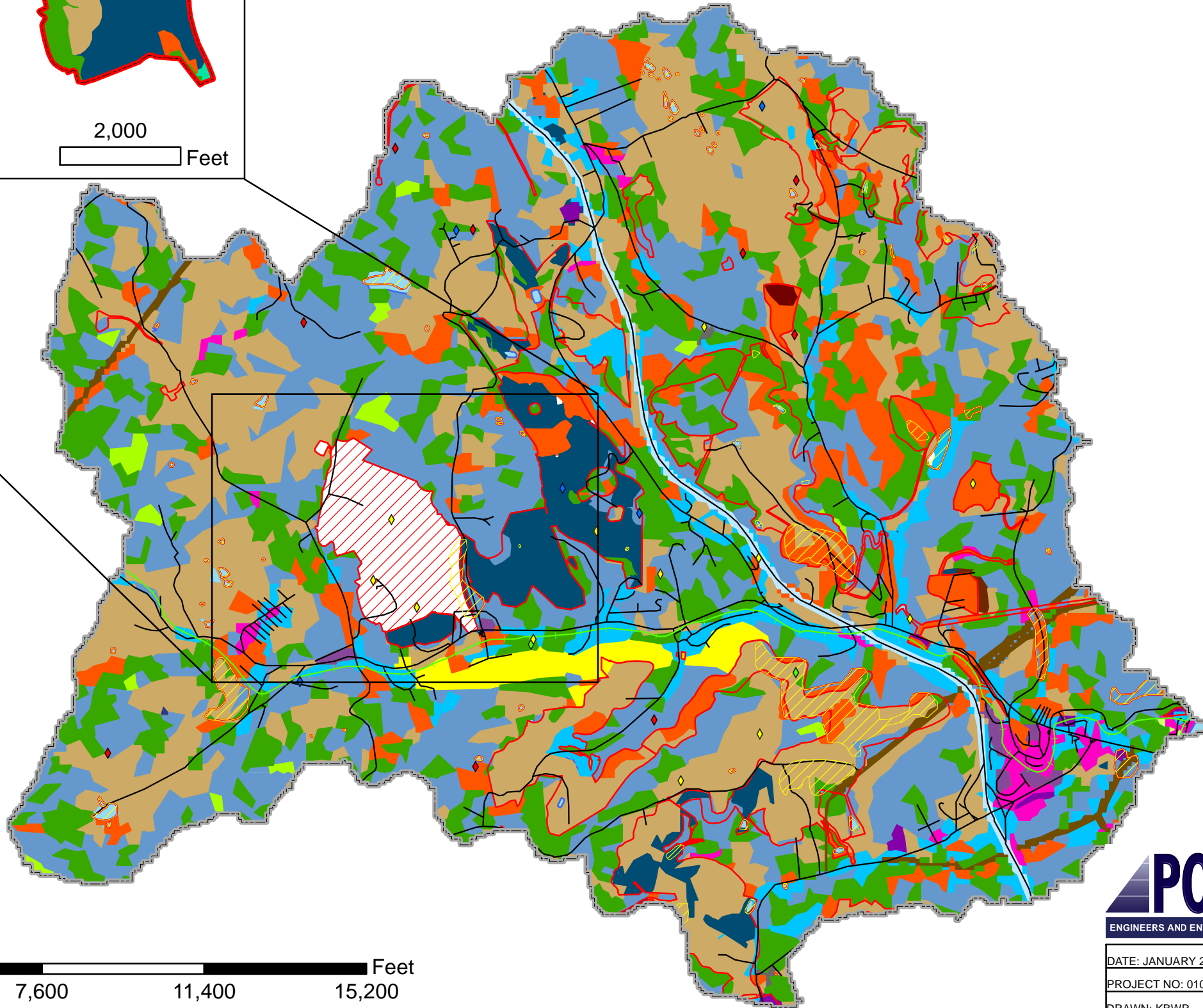


2,000
Feet

Legend
Proposed Future Mining (2.40%)
Land Use/Land Cover

Barren land - mining, construction	0.73%
Diverse/mesophytic hardwood forest	0.40%
Moderate intensity urban	0.01%
Oak dominant forest	0.62%
Pasture/grassland	0.53%
Row crop agriculture	0.04%
Shrubland	0.07%



Legend

Focus Watershed (9,420.21 Acres)	
Post Mining Land Use Reviewed Area (17.25%)	
Future Mining (New Hill West Surface Mine - 2.40%)	

WVGAP Land Use/Land Cover Data (80.35%)

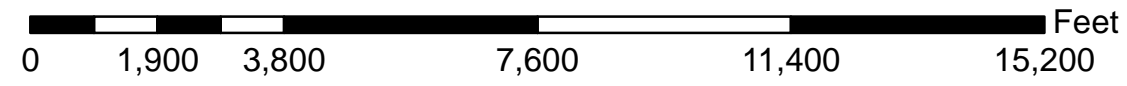
Barren land - mining, construction	0.10%
Diverse/mesophytic hardwood forest	14.55%
Floodplain forest	0.01%
Hardwood/conifer forest	0.53%
Herbaceous wetland	0.01%
Intensive urban	0.18%
Light intensity urban	1.15%
Major power lines	0.69%
Major roads	0.78%
Moderate intensity urban	5.05%
Mountain hardwood forest	1.18%
Oak dominant forest	30.16%
Pasture/grassland	19.89%
Populated areas	0.30%
Row crop agriculture	0.06%
Shrubland	5.54%
Surface Water	0.12%
Woodland	0.05%

Post Mining Land Use Reviewed Areas
Land Use/ Land Cover

Barren land - mining, construction	3.38%
Diverse/mesophytic hardwood forest	1.48%
Intensive urban	0.05%
Light intensity urban	0.01%
Major power lines	0.10%
Moderate intensity urban	0.46%
Mountain hardwood forest	0.02%
Oak dominant forest	1.11%
Pasture/grassland	7.88%
Row crop agriculture	0.06%
Shrubland	2.37%
Surface water	0.33%

Gas Wells (< 0.01%)
Status

Active Well (8)	
Abandoned Well	
Abandoned/Ordered	
Plugged	
Roads (63.64 Miles)	
Railroad (5.75 Miles)	
Pre-SMCRA Mining (2.49%)	



DATE: JANUARY 2012
PROJECT NO: 0101-09-0081
DRAWN: KBWR

Cumulative Land Use/Land Cover
Scott Run & Associated Watersheds
Osage Quadrangle
Near Cassville, Monongalia County, WV

PATH: G:\Projects\2009\09-0081 New Hill West\Map Documents\Land Cover v2.mxd